

**mrafee**



**109 Coolreaghs Road Cookstown  
Thursday 30th April @ 6:30pm**

# Conditions

1. The highest approved bidder shall be the purchaser. The Auctioneer reserves the right to refuse any bid, and should any dispute arise between two or more bidders, the lot or lots in dispute shall be put up again, or not, and resold at the discretion of the Auctioneer, or the auctioneer may declare the purchaser. The Auctioneer reserves the right to bid on behalf of the vendor up to and including any reserve price placed on any lot and to alter, divide, group or withdraw any lot or lots either before or at any time during the sale.
2. The Auctioneer shall regulate the bidding and no bid shall be retracted.
3. Every purchaser shall give his name and place of abode, in default of which the Auctioneers shall have the power to resell at once, or afterwards as they may think fit.
4. Each bidder shall be supposed to have seen and to be thoroughly acquainted with the contents and conditions of the lot or lots on which he may bid, and no allowance whatsoever will be made for any faults, imperfections or errors of any description. The measurements and quantities described in the Catalogue are believed to be correct and must be taken as such. The purchaser being held to have satisfied himself as to measurements and quantities and other specifications in the Catalogue before bidding, neither will the Auctioneers or the Vendors be responsible for any lot or parts of any lot after the fall of the hammer, from which time all lots purchased are at the risk of the Purchaser.
5. The Auctioneers or the Vendors do not guarantee the measurements catalogued, or the correct description, genuineness or authenticity of any lot.
6. Each purchaser shall pay the whole amount of his purchase money (Auctioneer's Commission payable by purchaser) for all lots bought by him before any lot or lots can be removed and the whole amount due from each purchaser must be absolutely paid on each day of the sale and if not paid within such time, all moneys deposited in any part payment shall be absolutely forfeited and the Auctioneers will be at liberty to resell the lot or lots or any parts thereof remaining un-removed, by Public Sale or otherwise, without giving previous notice to the purchaser and any difference or deficiencies which may arise from, such re-sale, together with all expenses attending the same shall be made good by the purchaser.
7. The lots are sold with all faults and errors of description. No allowance can be made in any case, nor will the Vendors be answerable for any deficiencies in quantities or measurements when the purchaser, his agent, carrier or man employed by him has removed any part of his lot or lots from the premises. All lots purchased must be removed

absolutely in the time specified and if not so removed may be resold by the Vendors.

8. The Purchaser shall be answerable for all damages occasioned by any injury or other lots, by the removal of lots purchased by them, or to the premises and to repair or pay damages to the owners of same before the removal of their lots from the premises. In the event of any persons interested in the premises, claiming the whole or any part of a lot before its removal there from or if in the Auctioneer's opinion, the removal of any lot will endanger or permanently damage any building, the Auctioneer may, by written notice to the purchaser of such lot delivered to him or his Agent, or sent by post to his abode or place of business last known to the Auctioneers, rescind the sale of any such lot. The purchaser shall then be repaid his purchase money but shall not have or make any other claim.

9. Such lot or lots as are not cleared away agreeably to the condition of this sale, will not only be forfeited and may be dealt with under last condition, but the purchaser shall pay every expense attending the removal of any such lot or lots, and the costs of making good any damage occasioned by such removal. No lots shall be removed until the day following the last day of sale.

10. If any dispute or difference arises about any lot, or any other subject, the same shall be settled by the Auctioneers, with the approval of the Vendors, whose determination shall be final and binding on all parties concerned.

11. The Auctioneers nor the Vendors do not accept any liability for personal injuries of any description sustained or caused by any reason whatsoever by any person while on the premises or otherwise.

12. Purchasers will pay 15% Auctioneers Commission (minimum fee £1) + VAT on the commission.



# Cookstown

**Online Sale by Auction of  
Fine Furnishings, Paintings, Collectibles, Jewellery etc.  
109 Coolreaghs Road**

**Thursday 30th April @ 6.30pm**



Briefly the sale includes a nice selection of living room, dining room and bedroom furniture, lots of paintings by Gladys D Simms, Tom McGoldrick, R Cochrane, Arthur Twells, Liam Reilly, Martin Hasson, Noel Shaw etc, lots of collectibles including Doulton, pieces of Dux, oil lamps, tapestries, clocks, tea and dinner set, Waterford and other crystal, collection of Nicholas Mosse, ruby, Beswick figurines, silhouettes etc.

Other items include a Kenwood mixer, barometers, linen, canteens of cutlery, rugs, stools, Ercol two seater settee and single chair.

Garden planters, garden benches, garden tools.

Nice jewellery including gold chains, rings, bracelets, earrings, bangles, brooches, gold sovereign etc.

**The entire catalogue is available to view at**

<https://www.easyliveauction.com/mcafeeauctions/>

**A virtual tour and a short video is also available on [www.mcafeeauctions.com](http://www.mcafeeauctions.com)**

Viewing Wednesday 29th April 11.30 - 1.00, 2.00 – 5.00pm  
and 6.00 - 7.30pm.

**THERE IS NO VIEWING ON THE DAY OF SALE.**

**easyliveAuction.com**



**Telephone Number During Viewing & Sale  
(028) 2766 7669 / 07860474956**



## **OUTSIDE**

- 1 A Lot of Two Rectangular Planters**
- 2 A Pair of Circular Planters**
- 3 A Larger Pair of Circular Planters**
- 4 A Larger Pair of Circular Planters**
- 5 A Good Wooden and Metal Garden Bench**
- 6 A Garden Figurine**
- 7 A Folding Summer Chair**
- 8 Two Large Circular Planters**
- 9 A Pair of Blue Glazed Circular Planters**
- 10 A Good Garden Bench and a Rectangular Planter**
- 11 A Sundial Base and a Square Planter Base**
- 12 A Garden Table and a Pair of Matching Chairs**
- 13 A Lot of Blue Glazed Planters**
- 14 A Belfast Sink**
- 15 A Belfast Sink**
- 16 A Lot of Garden Planters**
- 17 Two Old Circular Black Pots**
- 18 A Circular and a Square Planter**
- 19 A Wooden Garden Bench**
- 20 A Garden Figurine**
- 21 A Wooden Bird House**

## **GARAGE**

- 22 A Slimline 'Lec' Freezer**
- 23 Two Lots of Bowls and Their Bags**
- 24 Two Lots of Bowls and Their Bags**
- 25 A Kenwood Liquidizer, Handheld Cleaner, Room Heater etc**
- 26 A Shelf and its Contents**
- 27 A Shelf and its Contents**
- 28 Two Tool Boxes and Their Contents**
- 29 A Paper Shredder and a Magnifying Lamp**
- 30 An Enamel Bread Bin**
- 31 A Circular Enamel Painted Lidded Bin**
- 32 An Alba Music Centre and an Art Folder**
- 33 A Lot of Mainly Brushes**
- 34 A Large Container of Christmas Decorations**
- 35 Four Large Glass Lidded Jars and Four Old Coloured Bottles**
- 36 Two Boxed Lots of Candles and Candleholders**

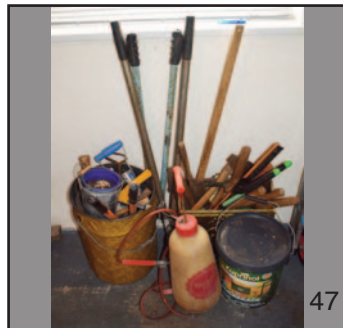
- 37 Two Boed Lots of Assorted Candles**
- 38 A Boxed Lot of Writing Sets, Candleholders etc**
- 39 Two Good Boxed Lots**
- 40 A Lot of Mainly Sewing Boxes**
- 41 A Large Box of Old Tins**
- 42 A Boxed Lot of Mainly Display Stands**
- 43 The Entire Contents of the Cupboard**
- 44 A Large Lot of Pots, Steps etc**
- 45 An Assorted Lot of Mainly Garden Tools**
- 46 A Large Lot of Baskets**
- 47 A Good Lot of Mainly Garden Tools**
- 48 An Aluminium Trolley and a Set of Folding Steps**
- 49 A Heat Lamp, Linen Basket and the Contents on the Top of the Filing Cabinet**
- 50 A Large Lot of L,P's**
- 51 A Four Drawer Filing Cabinet**
- 52 A Collection of Baskets**
- 53 A Very Good Boxed Lot including a Good Set of Artist Brushes**
- 54 A Bag of Bowls and a Bowling Bag**
- 55 A 30 Metre Extension Cable**
- 56 A Four Drawer Small Unit, its Contents and a Lot of other Storage Pieces**
- 57 A Large Lidded Box and Two Filing Cases**
- 58 A Small Set of Steps and Two Suitcases**

## **PORCH**

- 59 A Small Painted Unit**
- 60 A Good Old Overpot**
- 61 The Contents of the Top Shelf**
- 62 The Contents of the Wall Shelf**
- 63 A Slimline Chest of Six Drawers**
- 64 A Sundry Lot of a Table Lamp etc**
- 65 A Watercolour 'Ballygawley Bay' - R Cresswell Boak**

## **UTILITY ROOM**

- 66 The Contents of the Three Shelves**
- 67 The Contents of the Wall Cupboard**
- 68 A Blue Mixing Bowl, Another and a Vase**
- 69 A Lot of Good Mixing Bowls etc**



- 70 A Kenwood Chef Classic Mixer
- 71 A Sundry Lot of Kitchenalia
- 72 An Electric Room Heater, Sanyo Microwave and a Set of Salter Wall Scales
- 73 A Hotpoint Aquarius 1000 Washing Machine and Dryer

## KITCHEN

- 74 A 'Fenton' English Pottery Teaset
- 75 A Nice Selection of Chinese Cups and Saucers
- 75a The Contents of the Cupboards
- 76 A Nice Crown Devon Hand Painted Two Handled Bowl
- 77 A Sundry Lot of 'Eavesham' Royal Worcester Ware and a Covered Fish Dish etc
- 78 The Contents of the Kitchen Cupboard
- 79 The Contents of the Kitchen Cupboard
- 80 A Nicholas Moss Jug
- 81 Three Nicholas Moss Bowls
- 82 Two Large and a Smaller Nicholas Moss Bowl
- 83 A Large and Two Smaller Nicholas Moss Bowls
- 84 A Lot of Three Nicholas Moss Ramekins
- 85 A Lot of Five Nicholas Moss Tumblers
- 86 A Nicholas Moss Circular Bowl
- 87 A Nicholas Moss Jug
- 88 A Lot of Four Small Nicholas Moss Plates
- 89 Four Brixton Pottery Mugs
- 90 Two Brixton Pottery Cups and Saucers
- 91 A Brixton Pottery Teapot and a Lidded Jar
- 92 A Kitchen Table and a Pair of Matching Chairs
- 93 A Three Piece Cruet Set and a Small Footed Dish
- 94 A Four Piece Silver Plated Tea Service
- 95 A Watercolour 'Portaferry, Co.Down' - R B Higgins
- 96 A Watercolour 'Winter Trees' - Gladys D Simms

- 97 A Watercolour 'The Secret Door' - Gladys D Simms
- 98 An Octagonal Occasional Table
- 99 A Small Stool and a Painted Shoe Last
- 100 An Old Country Rose Teaset
- 100a A Tray of Cutlery and the Contents of the Three Drawers Below
- 100b The Contents of the Cupboard
- 101 An Emma Bridgewater Bowl, Five Others and a Granite Tazza
- 102 A Pair of Silver Plated Coasters
- 103 An Interesting Sundry Lot including a Dressing Table Set etc
- 104 An Early Coronation Ware Platter and Food Cover
- 105 A Good Lot of Bone Handled Servers etc
- 106 A Falcon Ware Character Jug and Another
- 107 Two Lots of Brass Weights
- 108 A Lot of Cased Cutlery
- 109 A Collection of Bridgewater and Other Tableware
- 110 A Good Lot of Silver Plate
- 110a The Contents of the Cupboard including Cake Tins etc
- 111 Three Lots of Sandwich and Cake Cutters
- 112 Two Earthenware Jars, Their Contents etc
- 113 A Nice Modern Mantle Clock
- 114 A Circular Wall Clock and the Contents of the Shelf
- 115 A Beswick Figurine of a Collie Sheep Dog
- 115a The Contents of the Cupboard including some Picquot Ware
- 116 A Beswick Figurine of a Pig
- 117 A Beswick Figurine of a Toberman Pinscher
- 118 A Beswick Figurine of a Springer Spaniel
- 119 A Beswick Figurine of a Blond Setter
- 120 A Super Solinette Camera and Its Flash Unit

## LIVING ROOM

- 121 The Contents of the Breakfast Bar Shelf



92



94



97



100



109



116



118



119



124



126



131



135



136



140



146



143



150



151



152



155



155b

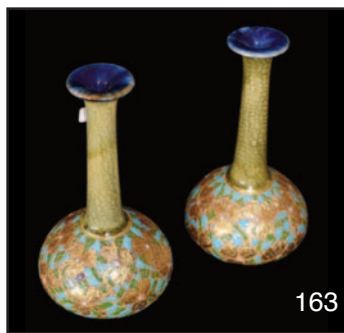


159

- 122 A Small Wine Table and a Candleholder
- 123 A Watercolour 'Cushendall Bay' - Stuart White ( GW Morrison)
- 124 A Watercolour 'Bush Bay, Portballintrae' - R Cresswell Boak
- 125 A Small Mahogany Drop Leaf Occasional Table
- 126 A Royal Albert 'Lavender Rose' Tea Set
- 127 A Large Tyrone Crystal Vase
- 128 A Pair of Sylvac Pots
- 129 A Small Panel Door Cupboard
- 130 A Lot of Three Nicely Framed Pictures and a Painted Slate
- 131 A Decorated Glass Finger Lamp
- 132 A Coalport Figurine 'Hayley'
- 133 A Canadian Pub Club Jug
- 134 A Capodimonte Figurine 'On the Garden Bench'
- 135 A Victorian Oil Lamp, Corinthian Pillar and Amber Bowl
- 136 A Nice Mahogany Occasional Table
- 137 A Pottery Picture and Two Other Pieces
- 138 Two Small Table Lamps and Shades
- 139 A Sundry Lot including an Unusual Small Pig Stopper Bottle
- 140 A Capodimonte Figurine of a Bull
- 141 Two Table Lamps and Shades
- 142 A Nest of Two Teak Tables
- 143 Two Sewing Boxes and their Contents
- 144 An Earthenware Hot Water Bottle and a 7lb Weight
- 145 A Pottery Three Terrace Candleholder
- 146 A Small Microscope in its Lidded Box
- 147 A Sundry Lot of Vases etc
- 148 A Small Oil Painting its Stand and Two Other Gilt Metal Stands
- 149 A Small Shaped Side Table and a Rush Top Stool
- 150 A Very Nice Ercol Two Seater Settee, its cushion and a set of loose covers
- 151 A Very Nice Ercol Chair, its cushion and a Set of Covers
- 152 A Nice Pure Wool Car Rug
- 153 A Nice Weavers Throw
- 154 A Small Cased Mantle Clock
- 155 A Small Drop Leaf Occasional Table
- 155a Four Pieces of Lustre
- 155b A Staffordshire Two Handled Jardinière
- 156 A Cast Metal Door Stop, a Painted Jug and a Figurine
- 157 A Small Circular Footstool
- 158 A Lot of Crown Derby and Staffordshire and a Painted Rectangular Plate
- 159 A Panasonic TV, Its Stand and a Video Player
- 160 An Oil Painting 'Evening Skies' - D Gilmore
- 161 A Good Earthenware Flagon
- 162 A Rush Top Small Stool
- 163 A Pair of Royal Doulton Vases
- 164 A Very Nice Small Shaped Front Three Drawer Chest, Drop Sides
- 165 An Unusual Bronze and Gilted Figurine Mantle Clock
- 166 A Nice Magnifying Glass
- 167 A Lot of Three Matching Vases
- 168 A 'Heartfelt' Teddy Bear, Lidded Box etc
- 169 A Watercolour 'The Old Shed' - Monogrammed G.D.S
- 170 A Watercolour 'The Barn Dance' - Monogrammed G.D.S
- 171 A Very Nice Oak Two Door Small Cabinet with Drawer Below
- 172 A Nice Upholstered Two Seater Settee and It's Cushions
- 173 A Watercolour 'Seaside Living'- Carrie O'Duinn
- 174 An Oil Painting 'Days Work Done' - Noel Shaw
- 175 A Crown Staffordshire Jug and Two Vases
- 176 A Limoges Handpainted Dish and Two Others
- 177 A Sundry Lot 'British Heritage Jug' Plates and a Teapot
- 178 A Good Lot of Five Waterford Crystal Tumblers and Another Tumbler
- 179 A Good Lot of Five Tyrone Crystal Brandy Glasses
- 180 Three Tyrone Crystal Footed Glasses and Four Other Tumblers
- 181 An Interesting Lot of Ceramics
- 182 A Collection of Glassware including an Etched Glass Jug



160



163



164



165



169



170



171



173



174



178



179



185



186



187



190



192



193



195



196



197



200



202



203

**183 A Good Lot of Tyrone and Other  
Crystal Tumblers**

**ENTRANCE HALL**

- 184 A Watercolour 'Still Life' - Gladys D Simms**
- 185 A Watercolour 'Still Life' - Gladys D Simms**
- 186 A Sandcast Figurine of a a Labrador Dog**
- 187 A Slimline Hall Table**
- 188 A Tall Bronzed Lustre Style Table Lamp and Shade**
- 189 A Hand Carved Burr Oak Dish and a Lustre Jug**
- 190 An Oil Painting 'Slemish' - R Cochrane**
- 191 A Nicely Framed Hall Mirror**
- 192 A Slimline Oak Two Door Cupboard / Hall Stand**
- 193 A Bone Handled Thumb Stick**
- 194 Two Nicely Hand Crafted Walking Sticks**
- 195 An Oil Lamp with Clear Glass Bowl**
- 196 A 100 x 160 Rectangular Floor Rug**
- 197 A Watercolour 'Cushendall' - Martin Hasson**
- 198 Two Small Watercolours and a Framed Silhouette**
- 199 A Circular Framed Pot Lid, an Oval Framed Painting and Another**
- 200 A Large Oil Painting 'At the Turf' - Fitzgerald**
- 201 A Nice Set of Four Botanical Framed Watercolours**
- 202 A Nice Rectangular Hand Crafted Tapestry**
- 203 A Nice Circular Framed Tapestry**
- 204 A Small Four Drawer Chest on Bracket Feet**
- 205 A Good Circular Imari Bowl**
- 206 A Good Shelf of Linen, Towels etc**
- 207 Two Storage Trays of Linen**
- 208 A Box of Linen**
- 209 A Small Trio of Watercolours ' - Gladys D Simms**
- 210 A Small Trio of Watercolours ' - Gladys D Simms**
- 211 The Top Two Shelves of the Hall Cupboard**
- 212 The Contents of the Bottom of the Hall Cupboard**

**DRAWING ROOM**

- 213 An Unusual Fall Front Coal Scuttle with Cupboard Above**
- 214 A Waterford Crystal Table Lamp and Shade**
- 215 An Oil Painting 'Young Beach Combers, Rockport' - Arthur Twells**
- 216 A Good Square Upholstered Pouffe and a Magazine Rack**
- 217 A Good Lot of Crystal**
- 218 A Pretty Lady Figurine 'Emma'**
- 219 A Lot of Three Small Royal Doulton Figurines**
- 220 A Royal Doulton Figurine 'Carolyn'**
- 221 A Hammersley Bone China 'Queen Anne' Teapot**
- 222 A Nice Mahogany Shaped Front Corner Display Cabinet**
- 223 An Oil Painting 'Pastures on the Braid' - R Cochrane**
- 224 A Nice Oval Framed Silhouette - Christine Silver**
- 225 A Nice Rectangular Mahogany Side Table with Gallery Stretcher**
- 226 A Lot of Six Cabinet Cups and Saucers**
- 227 A Pair of Small Gilt Framed Silhouettes**
- 228 A Very Nice Brass Table Lamp and Shade**
- 229 A Nice Collection of Ruby Glass**
- 230 A Very Nice Inlaid Mahogany Upholstered Armchair**
- 231 A Lot of Six Nice Cabinet Cups and Saucers**
- 232 Three Tall Modern Glass Vases**
- 233 Two Willow Tree Angels and Three Bone Figurines**
- 234 An Old Leather Satchel**
- 235 A Marble Based Table Lamp and Shade**
- 236 A Nice Lot of Crystal**
- 237 A Small Inlaid Lamp Table with Centre Drawer**
- 238 A Brass Companion Set and an Early Toasting Fork**
- 239 A Sundry Lot on the Fireplace Hearth**
- 240 A Coal Effect Fire Inset**
- 241 A Mahogany Wine Table, Pie Crust Edge**



204



205



210



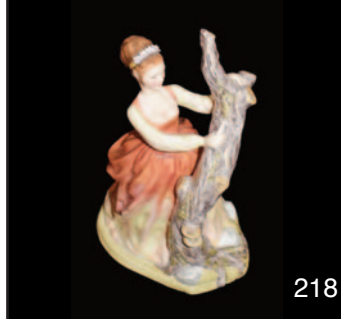
213



214



215



218



221



222



223



224



225



226



227



228



230



237



240



247



242



249

242 A Nice Mounted Set of Praying Hands, Signed  
243 A Royal Doulton Figurine 'Daydreams'  
244 A Royal Doulton Figurine 'Ninette'  
245 A Royal Doulton Figurine 'Fair Ninette'  
245a A Hummell Figurine  
246 A Royal Doulton Figurine 'My Love'  
247 A Royal Dux Figurine 'Boy with Water Carrier'  
248 A Royal Dux Figurine 'Lady with Doves at Feet'  
249 A Pair of Beswick Birds  
250 A Very Nice Three Piece 'Dervent' Drawing Room Suite and its Cushions  
251 A Good Metamec Mantle Clock  
252 A Nice Gilt Framed Oval Wall Mirror  
253 A Very Nice Carved Back Upholstered Single Chair  
254 A Watercolour 'The Monument, Rostrevor' - D Reid  
255 A Watercolour 'The Hares Gap' - D Reid  
256 Two Small Circular Silhouettes  
257 A Lladro Figurine 'Girl with Flowers and a Bird'  
258 A Lladro Figurine 'Girl with Handbag'  
259 A Lladro Figurine 'Girl with Flower and a Bird'  
260 An Unusual Circular Occasional table with Lift Top Card Table  
261 A Nice Blue and White Ceramic Foot Bath  
262 An Oil Painting 'Taking a Break' - Liam Reilly  
263 An Unusual Vienna Hand Painted Jug  
264 A Tall Hand Painted and Gilted Jug  
265 A Nice Inlaid Mahogany Display Cabinet with Leaded Glass Doors  
266 The Top Shelf of the Display Cabinet including Belleek, Noritake etc  
267 A Pair of Nicely Decorated and Gilted Ewers  
268 Two Nice Hand Painted Cabinet Cups and Saucers and a Similar Dish  
269 A Nice Cabinet Cup and Saucer and Other Pieces

270 A Small Wooden Stool and Its Cushion  
271 A Ruby Glass Decanter, Small Ruby Jug and a Ruby Sugar Bowl  
272 A Very Nice Gilt Framed Crystoluem 'Young Girl with Dog'  
273 An Oil Painting 'River and Landscape' - R Cochrane  
274 An Unusual Tall back Single Chair, Tapestry Seat  
275 A Two Handled 'Landrover' Box  
276 A Large Rectangular Floor Rug  
277 An Inlaid Mahogany D End Centre Table  
278 A Royal Crown Derby Cup, Saucer and Plate  
279 A Large 'X & O' Set

#### DINING ROOM

280 A Water Colour 'The Old Stone Bridge' - Gladys D Simms  
281 A Small Framed Tapestry 'Geese'  
282 A Framed Pencil Sketch 'Kenburn Wool Shed' - T P Allan  
283 A Large Watercolour 'Still Life' - Gladys D Simms  
284 A Crystal Vase, Biscuit Barrell and a Fruit Bowl  
285 A Sundry Lot including a Nice Knitting Needle Box  
286 An Unusual Gilted Glass Bottle and Two Large Coloured Glasses  
287 A Silver Plated and Crystal Cruet Set and a Hand Painted Jug  
288 The Contents of the Middle Shelf including an Aynsley Orchard Gold Two Handled Bowl  
289 A Good Shelf of Assorted Crystal Ware including Hock Glasses etc  
290 A Waterford Crystal Comport, Footed Bowl and Jug  
291 A Nicely Framed Still Life Watercolour - Gladys D Simms  
292 A Nicely Framed Still Life Watercolour - Gladys D Simms  
293 A Nicely Framed Still Life Watercolour - Gladys D Simms  
294 A Nicely Framed Still Life Watercolour - Gladys D Simms  
295 A Waterford Crystal Jug and Two Waterford Crystal Condiments



250



252



253



254



255



257



259



260



262



265



268



270



271



272



274



275



277



279



282



296



297

296 Six Large Waterford Crystal Footed Wine Glasses  
297 Six Waterford Crystal Sundae Dishes  
298 Six Waterford Footed Glasses  
299 The Entire Top Shelf of the Display Cabinet  
300 The Entire Middle Shelf of the Display Cabinet  
301 The Entire Bottom Shelf of the Display Cabinet  
302 An Aynsley Orchard Gold Large Plate and Two Others  
303 A Nice Old Biscuit Barrell and a French Hand Painted and Gilted Bowl  
304 Three Nice Old Tea Cosies  
305 Two Nice Modern Crystal Footed Bowls  
306 A Hand Painted and Gilted Limoges Comport  
307 A Royal Doulton Figurine 'Stephanie'  
308 A Royal Doulton Rectangular Decorated Dish  
309 A Pair of Crystal Candlesticks and Two Preserve Jars  
310 A Nice Early Teak Extending Dining Room Table and Chair Set  
311 A Belleek Jug and a Belleek Jug and Sugar  
312 Two Nice Glass Comports  
313 A Good Kings Pattern Canteen of Cutlery  
314 A Tall Brass Pillar Oil Lamp, Hand Painted Bowl and Etched Glass Shade  
315 An Oil Painting 'Back Home' - Tom McGoldrick  
316 A Pair of Nice Gilt Framed Oval Paintings  
317 A Set of Three Circular Gilt Framed Plaques and a Small Watercolour - Elizabeth Ferguson  
318 A Gilt Framed Silhouette - probably Christine Silver  
319 A Nice Nest of Three Tables  
320 A Bon Bon Dish  
321 A Pair of 'Fish Gurgling' Jugs  
322 A Single Carved Oak Berger Back Upholstered Chair  
323 A Blue Glass Finger Lamp  
324 A Clear Glass Finger Lamp

325 A Nice Sized Fall Front Writing Bureau, Fitted Interior  
326 A Table Lamp and Shade  
327 A Pair of Oak Framed Watercolours  
328 A Nice Gilt Framed Tapestry  
329 A Gilt Framed Watercolour 'Still Life' - Gladys D Simms  
330 A Gilt Framed Oil Painting 'Mull From North Connell' - Gladys D Simms  
331 An Oil Painting 'Reflections' - Barbara McIntyre  
332 A Nice Decoupage Picture - Crystal Shelby  
333 A Watercolour 'Thatched Living' - Gladys D Simms  
334 An Oil Painting 'Still Life' - Gladys D Simms  
335 An Oil Painting 'Landscape' - Gladys D Simms  
336 A Nice Wooden and Silver Plated Two Handled Tray  
337 A Rush Top Stool  
338 Three Pieces of Wedgewood and Two Glass Vases, on the window sill  
339 A Large Silver Plated Two Handled Presentation Trophy and Another Trophy  
340 Two Masons Ironstone Jugs and a Similar Platter  
340a A Hexagonal Top Table  
341 A Brass Oil Lamp, Other Lamp Parts and some Brass Ware  
342 A Watercolour 'Sea and Landscape' - Signed  
343 A Large Hand Crafted Gilt Framed Panel  
344 A Watercolour 'The Tower' - Gladys D Simms  
345 An Oil Painting 'Winter Scene' - Gladys D Simms

#### **BEDROOM 1**

346 An Inlaid Mahogany Single Chair  
347 Two Table Lamps and Shades  
348 A Royal Devon Fruit Bowl on Stand  
349 An Unusual Lidded Jewellery Box  
350 An Oil Painting 'Stooking the Corn' - Doran  
351 A Watercolour 'Still life with Flower' - Gladys D Simms



298



305



307



310



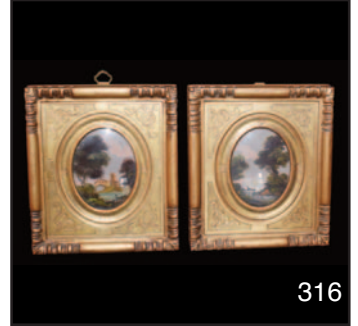
313



314



315



316



318



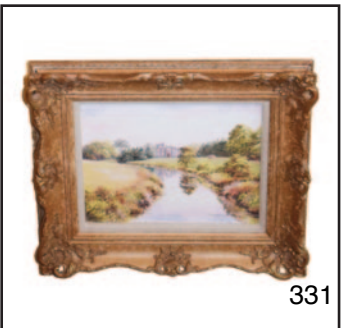
325



328



330



331



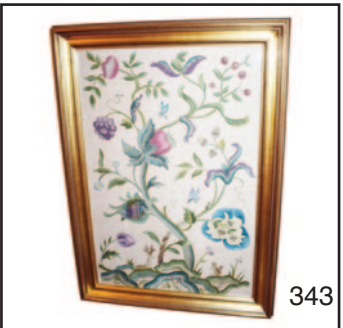
339



340a



342



343



344



345



348



349



350



352

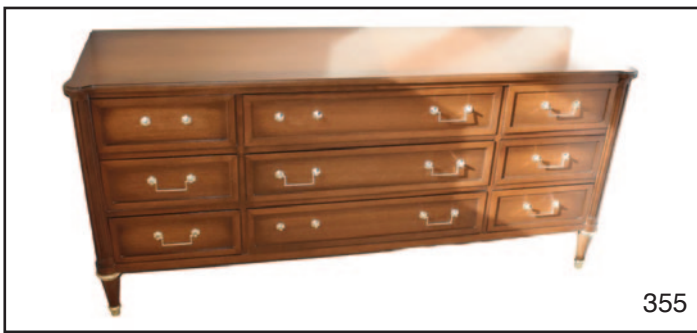
352 A Good Double Bed its Mattress and Covers  
353 A Nice Lot of Compacts  
354 A Good Pine Clothes Rail  
355 A Nice Modern Chest of Drawers  
356 A 5ft x 3ft Rectangular Wool Pile Floor Rug  
357 A Slimline Painted Chest of Five Drawers  
358 A Coalport Figurine 'CafÈ Royal'  
359 An Amber Glass Finger Lamp  
360 A Nice Pair of Circlar Framed Tapestries  
361 Two Small Painted Stools  
362 A Small Mahogany Four Drawer Chest  
363 A Collection of Trinket Boxes  
364 A Car Rug and Two Throws  
365 A Pair of Tapestry Cushions  
366 A Box of Cushions etc  
367 A Lot of New and Other Bed Linen  
367a A Basket of Pictures  
368 A Small Oak Set of Bookshelves  
369 A Noritake Dressing Table Set  
370 A Good Set of Wooden Bellows  
371 A Volume 'The Works of Oscar Wild' and Some Burns Books  
372 A Gilt Framed Bevelled Glass Wall Mirror  
373 A Carved Back Single Chair  
374 A Lloyd Loom Ottoman  
375 A Victorian Brass Kettle  
376 A Nice Watercolour 'Boating' - Tom McGoldrick  
377 An Interesting Box of Books  
378 Two Stationary Packs etc  
379 A Watercolour 'A Cliff Edge' and Another - Gladys D Simms  
380 A Watercolour 'Butterflies' - Gladys D Simms  
381 An Oil Painting 'Flowers' - Gladys D Simms  
382 Two Vintage Suitcases  
383 A Gents Dressing Case and Two Small Jewellery Boxes  
384 A Nice Pair of Table Lamps and Shades  
385 A Shaped Front Four Drawer Small Chest  
386 A Lift Top Jewellery Box  
387 Two Small Still Life Pictures - Gladys D Simms  
388 A Pair of Oval Framed Tapestries

## BATHROOM

389 A Painted Wall Rack and Contents  
390 A Painted Three Drawer Chest and a Wooden Basket  
391 A Framed Hand Crafted Picture of a Rooster - Gladys D Simms

## BEDROOM 2

392 A Watercolour 'Flowers in a Vase' - Gladys D Simms  
393 A 3D Hand Crafted Picture  
394 A Good Artists Easel and Paint Set  
395 An Oak Framed Single Chair  
396 A Lot of Three Wall Plates  
397 A Nice Brass Dressing Mirror on Stand  
398 The Remaining Contents o of the Chest of Drawers  
399 A Nice Shaped Front Chest of Four Drawers  
400 A Large Royal Worcester 'Summer Morning' - Tea, Coffee and Dinner Set  
400a A Hornsea Pottery Teaset  
401 A Tuscan China Tea Set and a Foley Cake Plate  
402 An Oval Oil Painting 'Roses' - Gladys D Simms  
403 Two Nicely Framed Still Life Pictures  
404 A Pair of Table Lamps and Shades  
405 A Very Good Double Bed, Mattress and Covers  
406 A Lot of Linen in Basket  
407 A Framed Watercolour 'Still Life with Flowers' - Gladys D Simms  
408 A Lot of Tapestry Cushions  
409 A Very Good Lot of Linen  
410 An Oil Painting 'Evening Light' - Gladys D Simms  
411 A Very Good Box of Linen  
412 A Nice Blue and White Jug  
413 A Lot of Three Small Pictures - Gladys D Simms  
414 Two Nicely Framed Watercolours 'Still Life' - Gladys D Simms  
415 The Top Two Shelves of the Double Wardrobe  
416 The Remaining Contents of the Wardrobe



417 A Large Lot of Materials, Ribbons  
etc

418 A Large Lot of Postcards, Small  
Basket of Books

## CABINETS

419 A Nice Parker Pen

420 A Wooden Lidded Box etc

421 A Barbour Pen Knife and Four  
Others

422 A Royal Irish Constabulary Whistle,  
A Tennents and a Guinness Pen  
Knife

423 A Lot of Silver and Other Thimbles  
and a Pill Box

424a A Lot of Silver Cutlery and Other  
Cutlery

424 Two Small Compasses, Dice Set etc

425 Two Small Pouches of Mainly 3d  
and 6d Pieces

425a A Boxed Lot of Souvenir Spoons,  
Sugar Tongs etc

426 Two Silver Spoons and a Collection  
of Souvenir Spoons

426a An Early Bright Cut Silver Serving  
Spoon

427 A Sundry Lot of Badges including a  
Cheshire Regiment Highlands  
Badge and a Canadian Badge etc

428 A Sundry Lot of a Ronsons Lighter,  
Dice, Cards etc

429 A Silver Inkwell

430 A 9ct Gold Ring

431 A 9ct Gold Citrine Ring

432 3 Pairs of 9ct Gold Earrings

433 A 9ct Gold Bar and its Silver Medal

434 A 14ct Gold Watch and Rolled Gold  
Bracelet

435 A 9ct Gold Sovereign Brooch 1909  
in a 9ct Gold Mount

436 A Pair of 9ct Gold Earrings

437 A Very Nice 9ct Gold Emerald and  
Pearl Brooch

438 A Heavy Silver Chain, T Bar and  
Sovereign Holder, Chester 1907

439 A Very Nice Gold Plated Pendant

440 A Nice Gold and Bloodstone Locket

441 A Nice 9ct Gold Bar Brooch

442 A Fine 9ct Gold Bracelet and Bible  
Pendant

443 Three Pairs of Silver Earrings

444 A Nice 18ct Gold and Diamond Ring

445 A 9ct Gold Bracelet and Padlock

446 A Heavy Silver Chain, T Bar and  
Sovereign Holder, Birmingham 1910

447 A Pair of 9ct Gold Earrings

448 An 18ct Gold Wedding Band

449 A Pair of 9ct Gold Earrings

450 A Very Nice Heavy 9ct Gold  
Necklace and T Bar

451 A Nice Collection of Hat Pins

452 A Silver Bangle

453 A Silver Inset Brooch

454 A Silver Inset Brooch

455 A Heavy Silver Bracelet

456 A 9ct Gold Cameo Brooch

457 A Heavy Silver Bracelet and a Silver  
T Bar

458 A Silver Plated Brooch and Three  
Links

459 A Heavy Gold Plated Necklace

460 A 9ct Gold Plated Necklace

461 A Silver Pendant and Chain

462 A Silver Cross and Chain

463 A Silver Pendant and Chain

464 A 9ct Gold Chain

465 A 1918 1/2 Sovereign

466 A 9ct Gold Gents Ring

467 A 9ct Gold and Garnet Ring

468 A 9ct Gold, Ruby and Diamond Ring

469 A 9ct Gold Wedding Band

470 A Silver Chain and Cross

471 A Gold Plated Bracelet with T Bar

472 A Very Fine Gold Chain

473 A Silver Brooch

474 A Heavy Gold Plated Necklace

475 A Nice Gold Plated Tbar and Fob

476 A Gold and Diamond Ring

477 A Silver Locket

478 A 9ct Gold and Opal Ring

479 A 9ct Gold and Silver Wedding Band

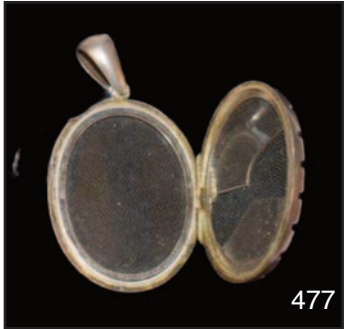
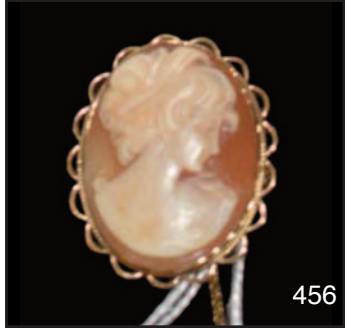
480 A Jewellery Box and Contents

481 Two Nice Ladies Necklaces

482 A Box of Mainly Necklaces

483 A Mixed Lot of Earrings, Badges,  
Watch etc

484 A Large Lot of Mainly Necklaces



# mcafee

