

mcafee



Ballycastle

Thursday 5th April @ 6.30pm

Conditions

1. The highest approved bidder shall be the purchaser. The Auctioneer reserves the right to refuse any bid, and should any dispute arise between two or more bidders, the lot or lots in dispute shall be put up again, or not, and resold at the discretion of the Auctioneer, or the auctioneer may declare the purchaser. The Auctioneer reserves the right to bid on behalf of the vendor up to and including any reserve price placed on any lot and to alter, divide, group or withdraw any lot or lots either before or at any time during the sale.
2. The Auctioneer shall regulate the bidding and no bid shall be retracted.
3. Every purchaser shall give his name and place of abode, in default of which the Auctioneers shall have the power to resell at once, or afterwards as they may think fit.
4. Each bidder shall be supposed to have seen and to be thoroughly acquainted with the contents and conditions of the lot or lots on which he may bid, and no allowance whatsoever will be made for any faults, imperfections or errors of any description. The measurements and quantities described in the Catalogue are believed to be correct and must be taken as such. The purchaser being held to have satisfied himself as to measurements and quantities and other specifications in the Catalogue before bidding, neither will the Auctioneers or the Vendors be responsible for any lot or parts of any lot after the fall of the hammer, from which time all lots purchased are at the risk of the Purchaser.
5. The Auctioneers or the Vendors do not guarantee the measurements catalogued, or the correct description, genuineness or authenticity of any lot.
6. Each purchaser shall pay the whole amount of his purchase money (Auctioneer's Commission payable by purchaser) for all lots bought by him before any lot or lots can be removed and the whole amount due from each purchaser must be absolutely paid on each day of the sale and if not paid within such time, all moneys deposited in any part payment shall be absolutely forfeited and the Auctioneers will be at liberty to resell the lot or lots or any parts thereof remaining un-removed, by Public Sale or otherwise, without giving previous notice to the purchaser and any difference or deficiencies which may arise from, such re-sale, together with all expenses attending the same shall be made good by the purchaser.
7. The lots are sold with all faults and errors of description. No allowance can be made in any case, nor will the Vendors be answerable for any deficiencies in quantities or measurements when the purchaser, his agent, carrier or man employed by him has removed any part of his lot or lots from the premises. All lots purchased must be removed absolutely in the time specified and if not so removed may be resold by the Vendors.
8. The Purchaser shall be answerable for all damages occasioned by any injury or other lots, by the removal of lots purchased by them, or to the premises and to repair or pay damages to the owners of same before the removal of their lots from the premises. In the event of any persons interested in the premises, claiming the whole or any part of a lot before its removal there from or if in the Auctioneer's opinion, the removal of any lot will endanger or permanently damage any building, the Auctioneer may, by written notice to the purchaser of such lot delivered to him or his Agent, or sent by post to his abode or place of business last known to the Auctioneers, rescind the sale of any such lot. The purchaser shall then be repaid his purchase money but shall not have or make any other claim.
9. Such lot or lots as are not cleared away agreeably to the condition of this sale, will not only be forfeited and may be dealt with under last condition, but the purchaser shall pay every expense attending the removal of any such lot or lots, and the costs of making good any damage occasioned by such removal. No lots shall be removed until the day following the last day of sale.
10. If any dispute or difference arises about any lot, or any other subject, the same shall be settled by the Auctioneers, with the approval of the Vendors, whose determination shall be final and binding on all parties concerned.
11. The Auctioneers nor the Vendors do not accept any liability for personal injuries of any description sustained or caused by any reason whatsoever by any person while on the premises or otherwise.
12. Purchasers will pay 15% Auctioneers Commission (minimum fee £1) + VAT on the commission.





Ballycastle

Antique and General Furnishings, Clocks, Collectibles, Paintings, Outdoor effects, Pony Traps, Garden ornaments etc.



'The Basement Rooms' Ann Street

Thursday 5th April @ 6.30pm

An interesting sale of antique and general furnishings inc living, dining and bedroom furniture inc table and chair sets, sideboards, occasional tables and chairs, piano, clocks, inc three brass dial longcase clocks, Vienna and other wall and mantle clocks, paintings, collectibles inc. Doultons, Waterford and other crystal, ceramics, brass, tea and dinner sets, lamps, selection of oak stools, cased silver cutlery, other silver, carpet squares and rugs, Overmantles and mirrors, etc

Other lots include two pony traps, large collection of Tilley and other lamps, garden ornaments and planters, leaf collector, collection of Hornby trains and parts, and die cast models, horse saddles, etc,

Viewing Bank Holiday Tuesday and Wednesday 3rd and 4th of April 3.00-5.00 and 7.00-8.30 and day of sale from 3.30 until start of sale at 6.30pm.



Telephone Number During Viewing & Sale
(028) 2076 9404 / 07860474956



- A A Pair of Garden Ornaments 'Dogs'
- B A Pair of Garden Ornaments 'Lions'
- C A Pair of Garden Ornaments 'Dogs'
- D A Garden Figurine 'Man with Milk Cans'
- E A Garden Planter 'Horse and Cart'
- F A Pair of Horse Heads
- G A Garden Planter 'Horse and Cart'
- H A Pair of Horses Heads
- I A Garden Figurine 'Man with Milk Cans'
- J A Garden Figurine 'Man with Milk Cans'
- K Two Tractor Draw Bars
- L A Roof Box
- M A Painted Pony Cart
- N A Pony Cart

1. A Good Macallister 2400 Watt Chain Saw
2. A Set of Wooden Steps
3. An Old Sythe and Fork
4. A Box of Tools, Sandpaper Sheets, etc
5. An Old Ammunition Box
6. A Very Good New Home Electric Sewing Machine
7. A Tilley Lamp
8. A Tilley Lamp
9. A Tilley Lamp
10. A Very Good Childs Bike
11. A Set of Scales, A Copper Pan and a Slug Iron
12. A Wooden Wall Rack and a Small Typewriter and Sewing Machine
13. A Good Leather Saddle
14. A Good Lidded Box
15. An Office Desk
16. A Good Set of Hanging Wall Shelves
17. A Very Good Wall Tilley
18. A New Hose Reel and a Parasol Base
19. An Ash Filter
20. An Useful Axe
21. A New Spirit Level
22. A Wall Tilley
23. A New Storage Chest, for Assembly
24. A Leaf Gatherer
25. An Inlaid Drop Dial Wall Clock
26. A Nice Pair of Pokerwork Panels
27. A Very Good Table Tilley Lamp
28. A Very Good Table Tilley Lamp
29. A Very Good Table Tilley Lamp
30. A Very Good Table Tilley Lamp
31. A Tilley Lamp
32. A Tilley Lamp
33. A Tilley Lamp

34. A Tilley Lamp
35. A Table Tilley Lamp
36. A Table Tilley Lamp
37. A Table Tilley Lamp
38. A Copper Based Finger Lamp and a Table Lamp Base
39. A Brass Based Oil Lamp, Embossed Bowl
40. A Pair of Tilley Table Lamps
41. An Aladdin Lamp
42. A Set of Fleming Scales, A Blow Lamp, Butter Pats etc
43. A Cottage Based Oil Lamp
44. A Box of Old Boxes
45. A Good Canteen of Cutlery
46. A Box of Oil Lamps and Parts
47. A Nice Tall Vase
48. A Good Lot of Storage Boxes
49. An Early Old Chamber Pot and A Pair of Pottery Dogs
50. An Oak Fall Front Writing Bureau
51. Two Good Hot Water Bottles
52. A Carved and Inlaid Jewellery Box
53. A Good Sundry Lot
54. A Lot of Five Figurines
55. A Pair of Copper Lanterns
56. An Unusual Pair of Ornamental Elephants
57. A Pair of Pottery Dogs
58. A Lot of Brass Candlesticks
59. Two Good Floor Rugs
60. A Mahogany Firescreen / Table, Handcrafted Panel
61. Two Part Teasets, Plates, Cups etc
62. Two Boxed Lots
63. A Lot of Three Capodimonte Figurines
64. Two Wall Clocks, Framed Print etc
65. Three Interesting Wood Turning Books and a Box of Books
66. A Pair of Brass Candlesticks
67. Five Tilley Globes
68. A Pair of Oriental Figurines
69. A Pair of Brass Candlesticks and a Pair of Brass Vases
70. A Pair of Two Handled Vases
71. A Nice Pair of Two Handled Vases
72. A 100ft Magic Hose
73. A 100ft Magic Hose
74. A Four Door Locker
75. A Set of Wooden Painted and Pine Shelves
76. A Box of Books
77. A Boxed Lot



A



C



D



F



M



N



17



25



26 Pair



45



50



55



56



57



70



80



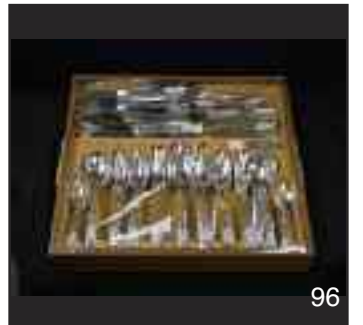
85



89



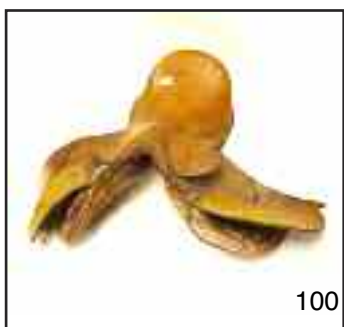
90



96



97



100



114



134

78. A Set of Encyclopaedia and Their Wooden Book Rack
79. A Good Collection of Lamp Globes and Funnels
80. An Inlaid Mahogany Chest of Five Drawers
81. A Good Sundry Lot
82. A Good Boxed Lot of Tools
83. A Basket of Glass and Other Nuggets
84. A Preserving Pan and Contents
85. An Old Country Charm Drinks Cabinet
86. A Sewing / Tool Box
87. A Childs Gas Mask in Box
88. A Mahogany Framed Dressing Mirror on Stand
89. A Nice Overlaid Jug
90. A Good Mahogany Chest of Five Drawers
91. An Oak Comport, Tea Caddy and a Pair of Cloggs
92. A Gas Mask and Carbide Lamp
93. A Loaf Box and a Stainless Steel Cook Set
94. An Oak Stick Stand and A Mug Rack
95. A Very Good Lidded Trunk
96. A Good Canteen of Cutlery
97. A Good Circular Crystal Fruit Bowl
98. A Good Clothes Rail
99. A 12 Volt Air Compressor and a Tool Box
100. A Childs Leather Saddle
101. A Painted Wooden Bench
102. A Good Tilley Lamp
103. A Rhinoceros Figurine
104. An Oak Cased Mantle Clock
105. A Pair of Nicely Framed 'Landscapes'
106. A Good Gas Heater
107. An Aladdin Lamp
108. Two Nice Masons Ironstone Plates
109. A Volume 'The Magazine of Art and Other Volumes'
110. A Good Pine Farmhouse Table and Six Chair Set
111. A Large 'Whitehorse' Whiskey Bottle
112. Two Nice Royal Doulton Whiskey Flagons
113. Two Nice Pieces of Coloured Glass
114. A Figurine Based Mantle Clock
115. A Brass Pillar Oil Lamp, Ruby Bowl and Embossed Shade
116. An 1989 Volume of the 'Beano' and a Young Folks Scripture Character Roll
117. A Nice Decorated Jardinière on Stand
118. A Tray and Contents
119. A Framed Picture 'Interior Scene' and an Oil Painting
120. A Very Good Wall Tilley
121. An Astragal Glazed Corner Cabinet
122. A Large Collection of Coronation Ware, Contents of the Cabinet
123. A Pair of Two Handled Vases
124. A Four Piece Companion Set on Stands
125. A Painter Dresser
126. Two Nice Old Suitcases
127. A Royal Doulton, A Chokin and Other Wall Plates
128. A Nice Five Piece Dessert Set, Matching Teaset and Mugs
129. A Lot of Old Teapots, Jug and Sugar
130. An Interesting Collection of Bushmills Plates
131. A Gallery Tray and Contents and a Lot of Placemats
132. An Embossed Coal Box and a Three Legged Stool
133. A Good Brass Kettle Amber Handle and Trivet
134. A Large Pair of Decorated Vases
135. A Large Three Piece Brass Clock Set
136. A Lot of Four Imari Bowls
137. A Good Mahogany Breakfront Sideboard
138. A Sheeps Horn Table Lamp
139. A Collection of Framed and Unframed Prints
140. Two Nice Old Imari Plates
141. A Watercolour 'The Long Boat' and Two Framed Prints
142. A Watercolour 'Thatched Cottage' – B Joyce
143. An Old Miners Lamp and Another
144. A Nice Sized Washstand
145. A Fall Front Coal Scuttle
146. An Old Hot Water Bottle and a Pair of Butter Pats
147. A Nice Mantle Clock
148. A Set of Steak Knives, Placemats and Chopping Boards
149. A Painted Chest of Three Drawers
150. A Doulton Breakfast Set
151. A Large Glazed Vase
152. Two Ornamental Horses
153. A Six Piece Drinks Set
154. A Large Collection of Stemmed Glasses
155. An Old Painted Dresser
156. A Violin in Case
157. A Lot of Old Leather Bound and Other Books
158. A Lot of Brass Weights etc



135



136



138



140



143



144



145



152



156



162



164



167



170



177-179



190



191



192



196



197



180



201

159. A Tapestry Top Dressing Table Stool
160. A Good Carved Oak Barometer
161. A Box of Cutlery
162. A Glass Basket and a Nice Pair of
Candleholders
163. A Five Drawer Chest
164. A Large Copper Samovar
165. A Six Pillar Slate Mantle Clock
166. An Old Bowler Hat
167. A Marble Topped and Marble
Backed Wash Stand
168. A Rosiland Bone China Teaset
169. A Brass Based Table Lamp and Shade
170. A Small Mahogany Occasional Table
171. A Pine Wash Stand
172. A Walnut Cased Mantle Clock
173. A Two Tier Cakestand and a
Decorated Jug
174. A Mounted Charles McAuley Print
175. A Nice Decorated Tray
176. An Oak Framed Leather Armchair
177. A Royal Doulton Figurine 'Fleur'
178. A Royal Doulton Figurine 'Affection'
179. A Royal Doulton Figurine 'Paisley Shawl'
180. A Large Triple Weight
Grandmother Clock
181. A Waterford Crystal Decanter
182. A Good Crystal Decanter
183. A Shelf of Good Crystal
184. A Sundry Lot of Collectibles
185. A Nice Sized Triple Weight Grand
Daughter Clock
186. An Old Bushmills Whiskey Tray
and Other Collectibles
187. Three Good Large Lampshades
188. A Large Gilt Framed Picture
189. A New Power Cleaner
190. A Nice Slide Top Sewing Box
191. An Oil Painting 'Spring Lambs'
– R Keefer
192. An Oil Painting 'Over Looking Dunluce'
– G Moore
193. A Fur Coat
194. A Fur Coat
195. A Very Nice Four Fold Dressing Screen
196. A Very Good Rectangular Floor Rug
197. A Nice Sized Upholstered Settee
198. A Four Shelf Mahogany Whatnot
199. A Royal Standard Bone China Teaset
200. A Nice Sized Small Vienna Style
Alarm Clock
201. An Interesting Wall Plaque 'Constance
Wife of John of Gaunt'
202. A Walnut Cased Upright Piano
203. An Upholstered Piano Stool
204. A Banjo Style Barometer
205. A Noritake Teaset
206. A Glazed Planter
207. A Mahogany Towel Rail
208. An Oak Hall Chair
209. An Upholstered Tub Chair
210. An Inlaid Mahogany Corner Chair
211. A Dressing Table Stool
212. A Fine Balloon Back Chair
213. A Good Rocking Chair
214. An Extending Brass and Metal Fender
215. A Very Good Large Rectangular
Floor Rug
216. A Royal Standard Teaset
217. A Six Drawer Chest and Contents
218. A Nice Hand Crafted Wooden Tray
219. An Oil Painting 'Still Life'
220. A Circular Oak Wall Mirror and a
Mantle Clock
221. A Double Pedestal Office Desk
222. An Office Swivel Chair
223. A Good Cross Cut Saw
224. A Brother Typewriter
225. A New Saucepan and a Lot of
Condiments etc
226. A Gallery Tray and Contents
227. An Old Singer Sewing Machine
228. A Lot of Two Pressure Stove
229. A Model of a Ferguson TEA 20
230. A Bag of Golf Clubs
231. A Good Ice King Freezer
232. A Good Back Sprayer
233. A 31 Day Wall Clock
234. A Similar Wall Clock
235. A Good Mahogany Cased Double
Weight Vienna Wall Clock
236. A Mahogany Firescreen
237. A Jardinière on Stand and a Lloyd
Loom Bedside Cabinet
238. A Lot of Auguste Remoir Material
239. A Three Drawer Metal Chest of Drawers
240. A Large Set of Old Shop Scales
241. A Lot of Records and Picture Frames
242. A Large Collection of Glassware
243. A Table Top Iron
244. An Extension Cable with Fitted Light
245. A New Chain Saw Sharpener
246. An As New Jump Start



207



212



213



229



235



255



274



284



285



287 & 288



289



290



292



294



315



296



299



300



309



320



356 Pair



359

247. A Big Mouth 'Billy Bass' and A Metal Basket
248. A Shark Steam Cleaner and a Table Lamp
249. A Shelf of Glassware
250. A Lot of Platters and Bowls etc
251. A Shelf of Ornaments etc
252. A Shelf of Old Bowls, Crockery etc
253. A 1 ton Chain Lift
254. A Good Set of Aluminium Steps
255. An Unusual Gilted Metal Vienna Style Wall Clock
256. A Three Drawer Chest
257. A Small Dressing Mirror on Stand
258. A Metal Cabinet
259. A Boxed Sundry Lot
260. A Good Preserving Pan and a Table Lamp Base
261. A Boxed Lot of Dressing Table Pieces etc
262. A Mahogany Nest of Three Tables
263. Two Painted Wicker Chairs
264. A Box of Lamp Parts
265. A Nice Old Wood and Sons 'Venice' Dinner Set
266. A large Collection of New Kitchen Ware
267. A Good Wooden Tool Box and Contents
268. A Drop Leaf Table
269. An Electric Airless Spray Gun
270. A Good Set of Six Dining Room Chairs
271. A Large Collection of Royalty Magazines and a Jigsaw
272. A New Laminator and a Paper Trimmer
273. A Lot of Spice Jars
274. A Nice Three Legged Stool
275. A Good Circular Floor Mat
276. A Three Drawer Chest
277. A Nice Plantstand
278. A Figurine Based Table Lamp and Shade
279. A Nice Sized Mahogany Corner Cupboard
280. A Nice Walnut Side / Hall Table, Centre Drawer
281. An Occasional Table / Cabinet Single Drawer
282. A Lot of New Kitchen Ware
283. A Sundry Lot of Old Brass etc
284. A Watercolour 'Homestead' – B Webb
285. A Good Viners Canteen of Cutlery
286. An Upholstered Bedroom Chair
287. A Waterford Crystal Vase
288. A Waterford Crystal Oval Bowl
289. A Mahogany Cased Mantle Clock
290. A Very Nice Pair of Decorated and Gilted Table Lamps and Shades
291. A Watercolour 'Still Life' – J Hardy
292. A Very Nice Mahogany Cased Mantle Clock
293. A Blue Glass Based and Another Oil Lamp
294. A Large Silver Plated and Crystal Centre Piece
295. A Very Good Mahogany Extending Dining Room Table, Two Leaves, Eight Chairs including Two Carvers and a Matching Shaped Front Sideboard
296. A Maddock of England Dinner Service
297. A Royal Doulton Decanter and a Royal Doulton Ships Decanter
298. A Waterford Crystal Decanter and a Tyrone Crystal Carafe
299. A Very Good Poole Summer Glory Tea and Dinner Set
300. A Tyrone Crystal Ships Decanter and Six Glass Set on A Wooden Gallery Tray
301. A Handmade Decorated Cup Set
302. A Six Piece Wedgewood Dessert Set
303. Two Nice Pieces of Decorated Crystal
304. A Waterford Crystal Water Jug
305. A Mahogany Framed Upholstered Day Bed
306. Two Nice Lots of Gilt Framed Pictures
307. A Waterford Crystal Millennium Bowl
308. A Nice Pair of Brass Candlesticks and a Set of Candle Snuffers on Tray
309. A Large Nao Figurine 'At the Water Fountain'
310. A Very Good Pair of Ladder Back Open Armchairs
311. An Early Old Imari Vase
312. A Very Large Carpet Square
313. A Good Shelved Lot of Ornaments
314. A Collection of Handpainted Gilted Crystal
315. A Good Mahogany Longcase Clock, Brass and Silver Dial, John Boswell of Belfast
316. Three Nice Imari Plates
317. A Collection of Ornamental Figurines
318. A Framed Oil "Dunluce Castle Sunset" By William Cunningham
319. A Framed Oil "Murlough Bay, Co.Antrim" by David Overend.



360



378 Set of 3



365



379



382



393



425



426



430



431-433



437



438



458



440



462



475



463



467

320. A Pine Chest of Six Drawers and a Pair of Matching Bedside Cabinets
321. A Lot of Dot Laundry Cleaner and a Lot of Central Heat Protector
322. A Nice Painted Kitchen Chair
323. A Mahogany Cased Westminster Chime Mantle Clock
324. A Mahogany Occasional Table and a Wine Table
325. A Framed Print 'The Coalboat' – F McKelvey and Another 'Ballintoy'
326. A Good Pair of Pottery Lion Cubs
327. An Ornate Mantle Clock
328. A Large Glazed Overpot
329. Two Glazed Overpots
330. A Mahogany Two Door Display Cabinet
331. A Staffordshire Bowl, and Overpot and a Mantle Clock
332. A Large Circular Lidded Oriental Jar
333. A Pair of Amber Crystal Candlesticks, Matching Bowl and a Dressing Table Set on Tray
334. A Lot of Three Framed Prints
335. A Collection of Small Ceramic Cottages
336. A Set of Seven Brass Weights
337. A Set of Seven Brass Weights
338. A Set of Five Brass Weights
339. Two Brass Shoe Horns
340. Two Brass Picture Frames and a Hot Trivet
341. A Cased Telescope and a Golfer Tee Set
342. A Pewter Quaich and a Hip Flask
343. Two Old Childs Bottles and a Small Vase
344. A Lot of Four Small Trucks
345. Four Old Sets of Playing Cards
346. A Lot of Collectors Spoons
347. A Small Occasional Corner Cabinet
348. An Old Style Telephone
349. A Nice Nest of Two Tables
350. A Four Piece Picquot Tea Service and A Matching Tray
351. A Pair of Masons Ironstone Plates, Other Plates and Platters etc
352. An Inlaid Mahogany Single Door Cabinet
353. An Old Style Sewing Machine Table
354. A Good Set of Pentax Field Glasses
355. Two Carved Ashtrays, Vases etc
356. A Pair of Gilt Framed Prints 'Landscapes' – Danny Todd
357. A Large Sundry Lot of New Ware
358. A Set of Nine Plates, 'Journey Through the Village'
359. An Oil Painting 'Back to Pasture' – G Moore
360. A Charcoal Drawing 'Young Lady' – Signed ES
361. A Nice Modern Two Door Cabinet
362. A Panasonic Bread Maker
363. A Lot of Silver Plate Ware
364. Two Old Animal Horns
365. A Large Walnut Cased Key Hole Vienna
366. A Pair of Folding Tables and Chairs
367. A Manicure Set, Body Care Set and a Nebuliser
368. A New Set of Pyrex Dishes
369. A Three Piece Christmas Train Set
370. A Cased Set of Servers and a Bone Handled Carving Set
371. A Very Nice Royal Doulton 'Braemar'
372. A Mahogany Extending Dining Room Table and Four Queen Anne Style High Backed Chairs
373. A Good Set of Three Imari Plates
374. A Good Set of Four Imari Plates
375. A Nice Sized Spring Vienna Wall Clock
376. A Mahogany Shaped Front Sideboard
377. A Tray and Contents
378. A Very Nice Set of Three Framed Stage Coach Prints
379. An Inlaid Mahogany Corner Chair
380. A Mahogany Turn Over Leaf Tea Table
381. A Good Sundry Lot Plates, Brassware, Finger Lamp etc
382. An Inlaid Mahogany Corner Chair
383. A Watercolour 'Forest Scene' – Patrick Stevenson
384. A Watercolour 'Riverscene' – S Forth
385. A Nice Mahogany Shelved Bookcase, Sliding Glass Doors
386. A Lot of 24 'Days Gone' Models
387. Four Horby Carriages
388. Three Vanguard Models
389. Three Hornby Carriages
390. A Good Lot of Wheetabix Trucks
391. Two Eddie Stobart Models
392. A Hornby Train and Another
393. Nine Pro Motor Models
394. A Lot of Eight Assorted Trucks
395. A Very Good Hornby Train Set
396. A Good Lot of Hornby Railway Pieces
397. A Union Pacific Trainset
398. A Box of Hornby Products
399. Five Lots of Hornby Track
400. A Lot of Hornby and Other Products



468



469



470



470A



472



476



480



482



483



485



487



491



500



501



502



505



505A



510



511



515



520 & 521



525



533



534

401. Three Hornby Carriages
402. Three Line Carriages and A Lot of Track
403. A Lot of Fifteen Wren Carriages
404. A Lot of Fifteen Wren Carriages
405. An Assorted Lot of Models
406. A Lot of Twelve 'Days Gone' Models
407. A Lot of Ten Tetley Models
408. A Lot of Twelve 'Days Gone' Models
409. A Lot of Nine 'Days Gone' Models
410. A Lot of Six Coca Cola Models
411. A Lot of Seven Hamleys Models
412. A Lot of Six Whiskey Trail Models
413. A Lot of Eight Punjana Models
414. A Lot of Four John West and Four
By Post Models
415. A Good Lot of Railway Track
416. A Lot of Four Hornby Carriages
417. A Lot of Seven Eddie Stobard Models
418. A Set of Four Dye Cast Models and a
P51 – D Mustang
419. A Boxed Lot of Parts
420. A Boxed Lot of Track
421. A Lot of Three Guinness and Two
Oxford Models
422. A Nice Set of Pine Open Bookshelves
423. A Good Box Lot of Old Maps
424. A Good Brass Bound and Inlaid
Writing Box
425. A Very Good Leather Hand Crafted
Saddle
426. A Bush Nell Telescope on Stand
427. A Pair of Three Seater Leather Couches
428. A Nice Gilt Framed Print 'Donegal'
– JH Craig
429. A Nice Gilt Framed Print 'Donegal'
– JH Craig
430. A Nice Inlaid Mahogany Glazed
Wall Cupboard
431. A Large Royal Doulton Crystal
Footed Vase
432. A Large Crystal Footed Vase
433. A Pair of Crystal Swans
434. A Set of Encyclopaedia Britannica
435. Two Shelves of Good Hard Backed
and Other Books
436. A Waterford Crystal Bowl and Other
Pieces of Crystal Including A Set
of Four Wine Glasses
437. A Nice Etched Glass Wall Mirror
438. An Old Circular School Wall Clock
439. A Good Gingerbread Clock
440. A Good Mahogany Cased
Longcase Clock, Brass Arch Dial,
D Brown, Glasgow
441. A Good Gingerbread Clock
442. A Framed 1937 Tapestry
443. A New Set of Prestige Pans
444. A Philips Hostess Trolley
445. A Nice Pine Fire Surround
446. A Pair of Tyrone Crystal Candlesticks
447. A Set of Open Bookshelves
448. A Framed Watercolour 'Riverscene'
449. A New Heated Blanket
450. An As New Tefal Food Master
and Blender
451. A Set of Four Mahogany Framed
Dining Room Chairs
452. A New Bronze and Rosewood
Cutlery Set
453. A Pair of Kitchen Chairs
454. A Good Lot of Bone Handled Cutlery
455. A Nice Inlaid Drop Leaf
Occasional Table, End Drawers
456. A Set of Brass Fire Irons and Dogs
457. A Pair of Oynx Book Ends and Two
Ashtrays
458. A Nice Lidded Metal Bound Coal Bucket
459. A Very Nice Oak Stool
460. A Nice Mahogany Dressing Mirror
On Stand
461. A Mahogany Standard Lamp and Shade
462. An Oil Painting 'Rainy Day in Belfast'
– Lorna Millar
463. An Oil Painting 'Awaiting Their Return'
– J P Rooney
464. A Gilt Framed Print – J H Craig
465. A Good Lot of Five Imari Plates
466. An Inlaid Mahogany Corner Whatnot
467. Two Nicely Carved Circular Dishes
468. A Nice Oak Hall Chair
469. A Very Good Large Brass Inlaid
Writing Box
470. A Nice Mahogany Stool
470a An Oak Stick Stand
471. A New Pro Chef Mixing Bowl and
Salad Spinner
472. A Good Rectangular Floor Rug
473. Two New Saucepan Sets
474. A Very Good Royal Grafton Malvern
Tea and Dinner Set
475. An Inlaid Mahogany Cabinet
Leather Inset
476. A Large Circular Fish Bowl on Stand



535



539



540



541



543



545



546 - 551



550 & 551



563



567 & 568



546 - 551



570



575



576



585



586



600



589



610



605

477. A Very Good Heavy Brass Corinthian Pillar Standard Lamp and Shade, Claw Feet
478. A Sundry Lot of New Kitchen Ware
479. Two Small Oak Occasional Tables
480. A Large Wooden Cased Clock and Thermometer
481. A Set of Four Royal Stafford TV Cups and Saucers
482. A Royal Stafford Regency 21 Piece Teaset
483. An Early Wellington China Teaset
484. A Silver Plated Gallery Tray and Contents
485. A Very Nice Pine Sheeted Back Open Top Dresser
486. A Good Lot of Stainless Steel and Other Cutlery
487. A Nice Small Chest of Eight Drawers
488. A Single Door Mahogany Cupboard
489. A Lift Top Sewing Box
490. A Good Scotch Chest of Six Drawers
491. Two Cased Set of Collectors Spoons
492. A Pair of Nicely Framed Hand Crafted Oriental Pictures
493. A Set of Six Sundae Dishes and a Crystal Fruit Bowl
494. A Framed Oil "Quick Exit" By Roy Wallace.
495. A Framed Oil "Sheep in Winter, Nr Knocklayde" By William Cunningham
496. A Samsung Flatscreen TV
497. A Nice Pair of Gilted Wall Brackets
498. A Nice Lot of Bowls and Platters
499. A Mahogany Three Drawer Chest
500. A Very Good Mahogany Framed Corner Chair
501. A Very Good Set of New Stainless Steel Saucepans
502. A Slimline Display Cabinet
503. A Two Drawer Filing Cabinet
504. A Crystal Fruit Bowl and Server and Eight Sundae Dishes
505. A Good Oak Trolley with Inset Tray
- 505AA Nice Sized Small Vienna Wall Clock
506. A Jug and Basin Set
507. Three Circular Planters
508. A Large Glazed Circular Bowl and a Tall Pottery Vase
509. A Fall Front Writing Bureau
510. A Mahogany Davenport Desk
511. A Dressing Mirror On Stand
512. A Wag at the Wall Style Wall Clock
513. A Collection of Five Pieces of Belleek
514. A Nao and Another Figurine
515. A Nice Three Drawer Hall Table
- 515AA Good Slate Mantle Clock
516. A Large Oval Bevelled Glass Wall Mirror
517. A Three Two and One Leather Suite
518. A Mahogany Coffee Table
519. A Lot of Three Small Pictures
520. A Nice Mahogany Two Door Wardrobe
521. A Larger Mahogany Two Door Wardrobe
522. A Circular Bevelled Glass Wall Mirror
523. A Banjo Style Barometer
524. A Phillips Flatscreen TV
525. A Nice Mahogany Shaped Front Hall Table
526. A Lot of Three Pictures
527. A New Footbath
528. A Small Two Drawer Chest
529. A Set of Brass Inlaid Bookends
530. A Nice Modern Chest of Five Drawers and Matching Dressing Table
531. A Good New Collection of Glassware
532. A Lot of Five Pieces of Belleek
533. A Canteen of Cutlery and a Steak Knife Set
534. A Nest of Eight Drawers
535. A Mahogany Chest of Five Drawers
536. A Small Curio Cabinet
537. A Standard Lamp Base
538. A Lot of Two Oil Paintings 'Landscapes' – A Gallagher
539. An Upholstered Armchair
540. A Mahogany Framed Upholstered Gents Armchair
541. A New Canon Printer
542. A Two Drawer Rossmore Filing Cabinet
543. A Small Mahogany Chest
544. A Royal Tuscan Bone China Coffee Set
545. A Large Nao Figurine Table Lamp Base
546. A Scale Model of A Tandum Style Bicycle
547. A Scale Model of a Tricycle
548. A Scale Model of a Tandem Style Bicycle
549. A Scale Model of a Delivery Bike
550. A Scale Model of a Motorbike and a Sidecar
551. A Scale Model of a Motor Bike
552. An Old Hand Painted Overpot and Another
553. A Lot of Four Framed Dublin Scene Prints



554. A Nice Old Brass Fender
555. An Unusual Metal Cased Wall Clock
556. A Large Gilt Framed Picture
557. A Large Boxed Lot
558. A Four Fold Draft Screen
559. An Old TG Green Baking Bowl
560. A Three Piece Stag Bedroom Suite, Wardrobe, Chest and Dressing Table
561. A Lot of Royal Copenhagen, Geobel and a Nao Figurine
562. A Good Collection of Stemmed Glasses
563. A Small Pine Two Door Cupboard and a Pine Wall Shelf
564. An Old 'Tokio' Planter and a Hand Painted French Comport
565. A Nice Slimline Mahogany 'Waterfall' Style Open Bookcase with the Option of
566. A Nice Slimline Mahogany 'Waterfall' Style Open Bookcase
567. A Nao And Another Figurine
568. A Nice William Widdop Mantle Clock
569. A Nice Pottery Teaset
570. A Good Oneida Canteen of Cutlery
571. Two Carnival Glass Dishes, Tyrone Crystal Bowl and Two Pieces of Wedgewood
572. An Interesting Lot of Books
573. A Five Drawer Bedroom Chest
574. A Pair of Pottery Dogs
575. A Large Figurine of a Stork
576. Two Nice Figurines 'Feeding the Calf' and Another
577. A Nao Figurine and Another
578. A Nice 21 Pieces Colclough Bone China Teaset
579. A Shelf of Glassware
580. A Good Set of Open Bookshelves, Cupboard Below
581. A New Pressure Cooker, Piquot Ware Teapot and Two Others
582. A Good Shelf of Glassware, Bowls etc
583. A Good Set of Sundae Dishes and Stemmed Wine Glasses
584. A Pottery Serving Dish and Ladle, Glassware etc
585. A Good Circular Wall Clock
586. A Fishbox Wall Clock
587. A Nice Pair of Watercolours
588. A Rectangular Coffee Table
589. Two Large Pottery Vases and Contents
590. A Good Brass Coal Bucket, Drop Handles
591. A Large Brass Fender
592. A Lot of Royal Cauldron 'Victoria Ware'
593. A Large Collection of New Pans etc
594. A Circular Coffee Table
595. An Upholstered Dressing Table Stool
596. A Good Mahogany Nest of Three Tables
597. Three Good Lots of Linen
598. A Box of Linen
599. Two Oil Paintings and a Framed Print of Coleraine Town
600. A Very Good Case of Collectors Spoons with the Option of
601. A Very Good Cased of Collectors Spoons
602. A Good Baking Bowl
603. A Good Lot of Linen
604. A Ripot Kid 20 and a Clamp Lock
605. A Very Nice Inlaid Mahogany Overmantle
606. An As New Single Bed
607. A Gilt Framed Photo and a Framed Print
608. A Large Collection of Cutlery
609. A Royal Albert 'Berkley' Pattern TV Cup and Saucer Set
610. A Queen Anne Bone China Teaset
611. Two New Wall Clocks and a New Water Jug
612. Five Nice Volumes 'The Library of Shakespere' and Other Nice Books
613. A Four Drawer Bedside Cabinet
614. A Nice Three Drawer Shaped Front Chest
615. A Collection of Model Cars etc
616. A Good Lot of Linen
617. A New Tower Pressure Cooker
618. A Very Good Pair of Pine Long Stools
619. A Small Lidded Commode
620. A Large Wooden Cased Clock and Thermometer
621. A Painted Side Table, Two Drawers
622. An Interesting Collection of Oriental and Other Plates
623. A Mother of Pearl Inlaid Jewellery Box
624. A Nice Fall Front Coal Scuttle for Restoration
625. A Mahogany Firescreen Hand Crafted Panel
626. A Good Leather Armchair
627. Three Oriental Pictures
628. A Brass Circular Tray and a Framed Print 'Dooms Day England'



673



683



688



690



695



699



700



705



711



712



717 - 719



723



728



729



730



734



735



737



738



740



744



745



746



747

629. A Set of Eight Waterford Crystal Wine Glasses
630. A Set of Six Good Crystal Tumblers
631. A Pair of Crystal Condiments and Two Crystal Preserve Jars
632. A Waterford Crystal Waterjug and Sugar
633. A Set of Six Waterford Crystal Tumblers
634. A Lot of Crystal Sundae Dishes and Six Decorated Tumblers
635. A Royal Worcester Hand Painted Lidded Jar and Two Royal Worcester Hand Painted Pots
636. A Lot of Six Tall Stemmed Wine Glasses
637. A Good Glazed Display Cabinet, Drawers Below
638. A Pair of Small Balloon Backed Chairs
639. An Old Style Telephone
640. A Good Old Lidded Trunk
641. A Nebuliser
642. A Nice Folding Piano Stool
643. A Nice Decorated Gallery Tray
644. An Inlaid Mahogany Parlour Chair
645. A Nice Drop Side Games Table, Centre Drawer
646. A Limited Edition Coalport Figurine 'Louisa at Ascot'
647. A Limited Edition Coalport Figurine 'Chelsea Reception'
648. A Limited Edition Coalport Figurine 'Convent Garden'
649. A Very Nice Pair of Brass Candlesticks
650. A Very Nice Brass Corinthian Pillar Oil Lamp Base and Bowl
651. A Very Nice Brass Inkwell
652. A Bevelled Glass Wall Mirror and A Pine Framed Picture
653. A Set of Postal Scales and Weights
654. An Oak Drop Side Coffee Table
655. A Box of Linen Handkerchiefs
656. A Good Leather Reclining Armchair
657. A Nice Fur Coat
658. A Nice Circular Oak Stool
659. A Framed Oil "Enter The Badger" by J.P.Rooney.
660. A Framed Oil "Connemara" by John Manson.
661. A Watercolour 'Dunluce Castle and East Strand'
662. An Oil Painting 'Westpark Bay and Rathlin Island' – O'hara
663. A Nice Oak Stool
664. A Good Three Bottle Tantalus
665. A Very Nice Inlaid Rosewood Breakfront Side Cabinet
666. A Collection of Crystal Glass
667. A Very Nice Oak Stool, Lift Top
668. A Very Nice Oak Stool, Lift Top
669. A Good Rectangular Floor Rug
670. A Small Oak Letter Box
671. An Interesting Sundry Lot
672. Two Nice Old Shells
673. Two Gilt Framed Oil Paintings 'Still Life' – Nancy Lee
674. A Framed Print 'The Wishing Well' – W Russell Flint
675. A Limited Edition Framed Print 'Red Sails in the Sunset' – N McKeague
676. A Good Rectangular Floor Rug
677. Two Old Blue and White Platters
678. A Framed Print 'Still Life'
679. An Old Water Jug and a Flower Holder
680. A Nice Sized Drop Leaf Dining Room / Occasional Table
681. A Nicely Decorated Oriental Figurine
682. A Mounted Wall Clock and Thermometer
683. A Circular Brass Tray on Stand
684. A Good Rectangular Floor Rug
685. A Good Set of Eight Mahogany Framed Dining Room Chairs including Two Carvers
686. A Pair of Two Handled Pottery Vases
687. A Lot of 19 Nicely Bound 'Stitch by Stitch' Volumes
688. A Nice Pair of Heavy Brass Vases and Another Pair of Vases
689. A Very Nice Large Table Lamp and Shade
690. A Very Nice Oak Two Door Sideboard
691. A Lot of Six Royal Doulton 'The Cavandish' Plates and Six Old Ironstone China Plates
692. A Collection of Dressing Table Pieces
693. Two Lots of Nicely Framed Prints
694. A Turn Over Leaf Tea Trolley
695. A Cast Metal Vienna Style Wall Clock
696. A Bevelled Glass Circular Wall Mirror
697. A Collection of Wedgewood
698. A Lot of Old Bunty and Blue Peter Annuals
699. A Large Slate Mantle Clock
700. A Large Mahogany Mirror Backed Sideboard
701. A Good Collection of Belleek
702. A Community Plate Cutlery Set



748



749



750



751



753 & 754



756 & 757



760



764



765



766 & 767



770 & 771



775 & 776



779



780



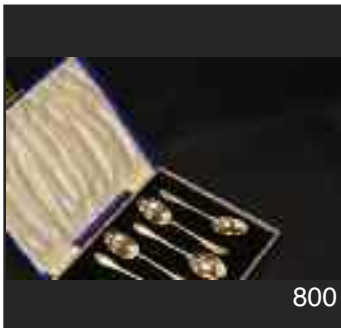
782



789



792



800



803 & 807



808



814



821



822



979

703. A Pair of Limited Edition Prints
French Views and Other Street Scenes
704. A Nice Dressing Table Stool
705. A Nice Marble Top And Marble
Back Dressing Table
706. A Very Good Inlaid Mahogany
Dressing Mirror on Stand
707. A Good Lot of Linen
708. A Watercolour 'Boats' – Louie Winward
709. A Fall Front Writing Bureau
710. A Sundry Lot of a Biscuit Barrell,
Condiment Set, Belleek Jug etc
711. An Unusual Silver Plated Biscuit
Barrell and a Teapot
712. A Very Fine Large Silver Plated Spirit
Kettle on Stand
713. An Oil Painting 'Sailing Boat' – Michelle
714. A Crystal Basket and a Crystal Fruit
Bowl
715. A Crystal Decorated Fruit Bowl and
a Vase
716. A Large Lot of Silver Plated Placemats
717. A Royal Doulton Figurine
'Autumn Breezes'
718. A Limited Edition Coalport Figurine
'The Elements'
719. A Limited Edition Coalport
Figurine 'Queen Mary'
720. A Good Shelved Sundry Lot
721. A Nice Upholstered Mahogany
Framed Chair
722. A Collection of Gilted Metal Crystal
Candlesticks
723. A Royal Doulton Figurine
'Queen Elizabeth II' in Original Box
724. An Art Deco Two Handled Brass Vase
725. A Nice Tall Brass Pillar Oil Lamp,
Crystal Bowl and Etched Shade
726. A Small Tapestry Top Stool
727. A Large Masons Ironstone
Two Handled Bowl
728. An Unusual Barometer and
Thermometer
729. A Box of Dice
730. A Very Nice Small Burr Walnut
Breakfront Side Cabinet
731. A Waterford Crystal Letter Opener
732. A Shoe Horn and a Back Scratcher
733. A Watercolour 'Dunluce Castle'
– S McLarnon
734. A Very Good Rectangular Floor Rug
735. An Inlaid Mahogany Turn Over Leaf
Card Table
736. An Unusual Plant Stand with
Circular Brass Pot
737. A Sylvac Figurine of a Dog
738. A Small Oak Drop Leaf Table
739. A Lot of Five Donald Duck Tumblers
740. A Good Mahogany Cased Long
Case Clock, Brass Arch Dial,
A Robinson, Larne
741. A Brass Kettle, Two Brass Cannons etc
742. A Shelf of Silver Plate and a
Three Piece Tea Service Etc
743. A Nice Oak Two Door Corner Cupboard,
Leaded Glass Doors
744. A Nice Pair of Upholstered Chairs
745. An Oval Breakfast Table on Centre
Pedestal and Four High Backed
Dining Room Chairs
746. A Richmond Bone China
'Wild Anemone' Dinner Service
747. A Cased Oak Mantle Clock
748. An Oil Painting 'In for the Night'
– Donal McNaughton
749. An Oil Painting 'Ready for Off'
– Donal McNaughton
750. A Good Oak Old Charm Extending
Dining Room Table and Six Chair Set
including Two Carvers
751. A Very Good Royal Doulton
'Carlylse' Tea and Dinner Set
752. A Circular Oak Framed Barometer
753. A Tall Waterford Crystal Vase
754. A Nice Crystal Vase
755. A Hummel Figurine 'Street Singer'
756. A Royal Doulton Figurine 'On Guard'
757. A Royal Doulton Figurine 'Long
John Silver'
758. A Sundry Lot of a Letter Opener,
Brass Candlesticks and a
Carriage Clock
759. A Spode Platter, Plate and
Some Blue and White Ware
760. A Nice Oak Dresser
761. A Waterford Crystal Water Jug
762. A Waterford Crystal Decanter
763. A Nice Framed Limited Edition
Print 'Mountains of Mourne' – C Cheney
764. A Good Rectangular Wall Clock

765. A Churchill Westminster Chime
Mantle Clock
766. A Large Nao Figurine
'The Water Carrier'
767. A Nao Figurine 'Girl with Cat'
768. Two Minature Longcase Clocks
769. An Unusual Centre Light Fitting
770. A Hammersley Lady Patricia
21 Piece Teaset
771. A Hammersley Lady Patricia Teaset
(no milk Jug but 3 extra cups)
772. A Collection of Small Ceramic
Figurines and a Letter Opener
773. Two Brass Desk Bells and Four
Horse Brasses
774. A Lot of Minatures
775. Two Imari Vases
776. Two Oriental Vases
777. Two Royal Doulton Figurines '
Lady Woodmouse' and 'Wilfred
Entertains'
778. A Lot of Three Paperweights and
a Ruby Coloured Bud Vase
779. A Nice Pair of Clarice Cliff Bizarre
Pattern Dishes
780. A Moorcroft Circular Bowl
781. A Figurine of a Sheep Dog
782. A Glass Figurine of a Pig and
another of a Coalitit
783. A Lot of Six Napkin Rings
784. An Album of Prince of Wales
Greeting Cards
785. A Benson and Hedges Advertising
Ashtray
786. A Figurine of a Crucifix
787. A Royal Doulton Figurine
'The Balloon Seller'
788. A Gilt Framed Small Picture
789. A Nice Teapot and Matching Cup
and Saucer
790. A Collection of Royal Crown
Derby Ware
791. Two Donegal China Tumblers and
A Belleek Heart Shaped Dish
792. A Ceramic Shire Horse and
Another Horse
793. A Nice Brass Telescope
794. A Collection of Postcards etc
795. A Compact and a Lipstick Holder
796. A Sundry Lot of Jewellery,
Badges, Horse Brass etc
797. A Tray of Coins and 10 Shilling Note
798. A Cased Set of 12 Silver Teaspoons
and Tongs, Birmingham 1940
799. A Cased Set of 6 Silver Teaspoons
and Tongs, Sheffield 1907
800. A Cased Set of 6 Silver Teaspoons,
Sheffield 1903 and a Cased Set of
Plated Teaspoons
801. A Silver Sugar Shaker, Sheffield 1908
802. A Silver Lidded Dressing Table Jar,
Birmingham 1911
803. Two Silver Dish Holders, Glasgow 1911
804. Six Silver Teaspoons, London 1835
805. Six Silver Teaspoons, Dublin 1839
806. A Silver Condiment Set,
Birmingham 1918
807. A Pair of Silver Candlesticks,
Sheffield 1899
808. A Set of Four Silver Mounted
Aynsley Coffee Cans, Sheffield 1932
809. A Silver Jug, London 1897
810. A Nice Silver Footed Jewellery Box,
Birmingham 1920
811. A Silver Ladle, Dublin, 1777
812. Two Silver Butter Knives,
Birmingham 1899
813. Two Silver Mounted Coffee Cans,
London 1892
814. A Very Nice Mother of Pearl and
Silver Dessert Set, Sheffield 1914
815. A Set of Six Silver Teaspoons,
Sheffield 1908
816. A Set of Six Silver Pastry Forks,
Sheffield 1964
817. A Circular Silver Jewellery Box,
Birmingham 1914
818. A Pair of Silver Sugar Nips,
Birmingham 1913 and a
Silver Spoon, Sheffield 1923
819. A Nice Caddy Spoon and a Silver
Topped Dressing Table Jar,
Birmingham 1919
820. Two Silver Condiments,
Birmingham 1917
821. A Silver Claddagh Ring
822. A Silver Pendant and Chain

mcafee



51 Main Street, Ballymoney, BT53 6AN, Tel: (028) 2766 7669