

mcafee

Fine Furnishings

'The See House'

Thursday 4th July @ 7.00pm



Refreshments and Meals available at The Foyle Golf Centre, prior to and during the sale!



Derry - Londonderry

Fine Furnishings **'The See House'**

112 Culmore Road, BT48 8JF

Thursday 4th July @ 7.00pm

On the instructions of Bishop Ken and Mrs Mary Good, and other vendors



An interesting collection of antique and general furnishings, paintings, collectibles, clocks, silver, jewellery and outdoor effects.

Viewing: Tuesday 2nd July and Wednesday 3rd July 3.00 – 5.00pm and 7.00 – 8.30pm and Thursday 4th July, the day of sale from 3.30 – 6.45pm

Sale will be conducted by catalogue and screen in The Foyle Golf Centre, 12 Alder Road (3 minutes away)



Telephone Number During Viewing & Sale
(028) 2766 7669 / 07860474956



Basement

1. A Crystal Jug and a Crystal Decanter
2. A Large Belleek Vase and a Donegal China 'Guildhall Derry' Vase
3. A Crystal Decanter, Tyrone Crystal Clock and a 'Jerusalem' Tray
4. A Set of Three Newbridge Crystal Candlesticks
5. A Nice Sized Table Top Revolving Bookcase and Its contents
6. Two 'Terry Villiers' Comical Golfing Prints
7. A Set of Four Botanical Pictures
8. A Very Good 'Briggs and Reilly' Gents Holdall
9. A Good Gents Holdall
10. A Very Good Rosewood Desk, Matching Leather Chair and Lowboy
11. A Very Good Gents Travel Case
12. A Coffee Table, Locker and a Small Pine Unit
13. A Panasonic Music Player
14. A Set of Six Newbridge Napkins Rings and Other Pieces
15. A Very Good Mobile Speaker Set, Complete with Microphone and Stand
16. A Very Good Mahogany Two Door Open Bookcase
17. A Four Drawer Filing Cabinet
18. A Four Drawer Filing Cabinet
19. A Framed Set of Four Watercolours 'Derry City, Portstewart, Binevenagh and Aughrim, Magherafelt' – John T Bannon
20. A Very Good Set of Six Dining Room Chairs
21. A Brother Sewing Machine
22. A Booster Tray and Two Collectors Dolls
23. A Set of Eight Folding Chairs
24. A Four Drawer Filing Cabinet
25. A Four Drawer Filing Cabinet
- 25A. A Royal Doulton Vase, Tea Pot etc
26. An AWIA Music System
27. An Oak Kneeler
28. An Oak Kneeler
29. A Large Copper Measure, Circular Stick Stand and an Old Copper Kettle
30. A Small Barometer
31. A Lloyd Loom Chair and a Wall Mirror
32. A Glass Water Dispenser
33. A Phrenology Head
34. An Old Camera, Stand and Projector
35. A Good Old Set of Meccano
36. A Large Print 'Horses' – Beverley Doolittle
37. Two Prints 'Ballyliffin Golf Club' and a Limited Edition Print 'Bishops Gate'

38. A Lot of Old L.P's
39. A Two Handled Silver Plated Tray
40. A Pair of Office Desks and a Similar Desk
41. A Pedestal Desk and an Office Chair
42. A Five Drawer Filing Cabinet
43. A Shredder, Guillotine and Two Paper Files, Folders etc
44. A Limited Edition Print 'St Columbs Cathedral' – Colin Granger
45. A Set of Six Nicely Bound Volumes 'Commentary I – VI'
46. A Pair of Limited Edition Prints – Martin Cooke
47. An Upholstered Rocking Chair
48. A Set of Eight Inlaid Mahogany Dining Room Chairs
49. An Oil Painting 'Evening Light' – John Manson
50. A Carved Mahogany Nest of Four Tables
51. A Large Copper Samovar
52. A Singer Sewing Machine Table
53. An Oak Two Drawer Chest
54. A Lot of Cooking Trays and a Pie Dish
55. A Very Early Old Chair
56. A Singer Sewing Machine Base
57. A Mahogany Two Door Wardrobe
58. An Early Old Upholstered Chair

Ground Floor Bedroom

59. A Circular Plantstand, Twisted Columns
60. A Inlaid Mahogany Mirror Door Wardrobe
61. An Inlaid Mahogany Chair
62. A Pair of Upholstered Chairs
63. A Lot of Two Oil Lamps
64. A Circular Small Three Legged Stool, Carved Top
65. A Mahogany Plantstand
66. A Nice Framed Print 'Donegal Headland'
67. A Nice Framed Print 'Rough Seas'
68. A Inlaid Mahogany Single Chair
69. A Lot of Three Oil Lamps
70. An Upholstered Armchair
71. A Good Patchwork Quilt and Some Others
72. A Mahogany Plantstand
73. A Set of Three Nicely Framed Prints
74. A Very Good Oak Revolving Bookcase
75. A Mahogany Clothes Rail

Utility Room

76. A Very Good Zanussi Chest Freezer
77. A Very Good Royal Doulton 'Marbella' Tea and Dinner Set



1



5



6



10



15



16



20 Set of 6



25A



27



35



52



69



70



74



76



79



80



89



91



94



100



101



110



111

78. A Lot of Brass Toasting Forks, Shoe Horns etc
79. A Very Good Heavy Duty Log Basket
Kitchen
80. A Very Good Cast Metal Stick Stand
81. A 19th Century Hill Walking Stick
82. A Horn Handled Walking Cane
83. A Silver Mounted Blackthorn Stick
84. An Oil Painting 'Sailing Boats' – J P Rooney
85. An Oil Painting 'Awaiting Their Return' – J P Rooney
86. A Brass Kettle and an Old Measure
87. A Very Fine Inlaid Mahogany Barometer
88. A Lot of Four Hummel Figurines
89. A Very Nice Inlaid Walnut Oval Table, Gallery Back
90. A Slimline Mahogany Mirror Backed Hall Stand
91. A Very Good Bentwood Coat and Hat Stand
92. A Very Nice Gilt Framed Bevelled Glass Wall Mirror
93. A Mahogany Lift Top Writing Desk, Leather Inset
94. A Cow Horn Dinner Gong and Beater
95. A Mahogany Slimline Bookshelf
96. A Set of Three Royal Doulton Bunnykins Figurines
97. A Set of Four Hummel Figurines
98. A Royal Winton Preserve Dish, Two Paperweights and an Old Jug
99. A Royal Winton Breakfast Set
100. A 19th Century Mahogany Chiffonier
101. A Fine Pair of Gilted Metal Warriors on Horses
102. A Pair of Hand Painted Glass Vases
103. A Solian Ware Coffee Set
104. An Old Crown Devon Teapot
105. A Carved Back Upholstered Armchair
106. A Carved Walnut Occasional Table
107. A Painted Glass Finger Lamp
108. A Pewter Based Finger Lamp
109. Two Old Court Jugs and Two Lustre Dishes
110. A Very Nice Oil Painting 'Donegal Cottages' – Tom McGoldrick
111. A Mahogany Stool
112. An Inlaid Mahogany Single Chair
113. A Horn Handled Fish Server
114. A Set of Fish Servers
115. A Royal Doulton 'Bredon Hill' Tea and Dinner Set
116. A Lot of Three Nice Circular Plates

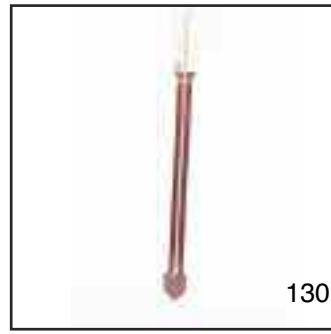
117. Six Edinburgh Crystal Glasses
118. A Set of Twelve Small Footed Glasses
119. A Very Good Kings Pattern Set of Cutlery
120. A Nice Royal Doulton 'Ting' Tea and Dinner Set
121. A Lot of Three Early Masons Ironstone Plates
122. A Pair of Staffordshire Dogs
123. A Staffordshire Figurine 'Highlander'
124. An Ashley Pottery Tea Pot and a Decorated Biscuit Barrell
125. Six 19th Century Glass Rinsers
126. Three Old Decanters
127. A Bewleys Coffee Machine
128. A Micromark Water Boiler
129. A Lot of Six Royal Doulton Wall Plates
Side Porch Area
130. A Mahogany Stick Barometer, A Committi & Sons London.
131. A Large Silver Plated Spirit Kettle on Stand
132. A Slimline Six Drawer Chest
133. An Old Clothes Dolly
134. A Silver Plated Spirit Kettle on Stand
135. A Nice Mahogany Hall Table
136. A Silver Plated Spirit Kettle on Stand
137. Two Early Silver Plated Coasters and a Silver Plated Cake Dish
138. An Old Helmet Shaped Copper and Brass Coal Scuttle
139. An Old Servants Bell Set
140. A Phillips Hostess Trolley
141. A Four Shelf Corner Stand
142. A Box of Old Shavers etc
143. An Old Samovar
144. An Early Pottery Jug and Chamber Pot
145. An Oil Painting 'Owls' – Chris Stephens
146. A Small Mahogany Framed Chair
Sun Room
147. A Lot of Four Royal Doulton Plates, 'The Four Seasons'
148. A Lot of Six Belleek Pieces
149. A Small Turn Over Leaf Card Table
150. A Very Good Glazed Display Cabinet
151. A Royal Crown Derby Paperweight 'Kingfisher'
152. A Royal Crown Derby Paperweight 'Koala Bear'
153. A Royal Crown Derby Paperweight 'Swan'
154. A Royal Crown Derby Paperweight 'Beaver'
155. Two Royal Crown Derby Paperweight 'Birds'
156. A Pair of Tyrone Crystal Candlesticks



123



128



130



131



132



136



139



145



150



152



153



161



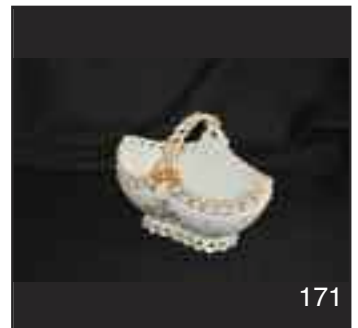
164



168



170



171



175



179



180



182



183



185



188



191

157. Two Flower Encrusted Belleek Jugs and a 1st Period Belleek Beaker
 158. A Belleek Teaset
 159. Three Royal Doulton Bunnykins Figurines
 160. A Collection of Swarovski Glass Figurines
 161. A Large Heavy Crystal Circular Footed Fruit Bowl
 162. A Belleek Cheese Dish, Belleek Jug and Sugar and a Belleek Jug
 163. Four Donegal China Vases and a Collection of Plates
 164. Two Large Tyrone Crystal Vases
 165. A Tyrone Crystal Candle Holder and a Crystal Vase
 166. A Collection of Tyrone Crystal and Other Vases, Bell etc
 167. A Carved Mahogany Letter Holder
 168. A Mahogany Standard Lamp and Shade
 169. A Nest of Three Mahogany Tables
 170. A Brass Corinthian Pillar Oil Lamp, Ruby Bowl and Shade
 171. A Nicely Decorated Porcelain Basket
 172. A Carved Walnut Occasional Table, Top Drawer
 173. A Nice Old Brass Bird Cage
 174. A Semi Circular Walnut Table
 175. A Nice Pair of Decorated Crown Devon Vases
 176. A Very Nice Pair of Table Lamps and Shades
 177. A large House Plant and Another
 178. A Decorated Brass Tray
 179. An Upholstered Conservatory Chair
 180. A Bishop and Stonier 9 Piece Dessert Service
 181. A Bronze and Cloisonné Vase
 182. An Old Chinese Brass Teapot
 183. A Nice Upholstered Three Seater Settee
 184. A Nice Upholstered Two Seater Settee
 185. A Mahogany Bureau Bookcase
 186. A Pine Rectangular Coffee Table
 187. A 3rd Period Belleek Jug
 188. A 2nd Period Belleek Jug
 189. A 2nd Period Belleek Jug
 190. A Superb 2nd Period Belleek Three Stand Basket
 191. A 2nd Period Belleek Planter
 192. A 2nd Period Belleek Teapot
 193. A Very Nice Pair of Belleek Cupid Candlesticks
 194. Two Belleek Cabinet Cups and Saucers and a Belleek Bowl
 195. Two Belleek Cabinet Cups and Saucers and a Belleek Vase
 196. A Large Ruby Bell and Another
 197. A Royal Doulton Figurine 'Joanne'
 198. A Royal Doulton Figurine 'Claire'
 199. A Very Nice Continental Porcelain Group 'Fisherboy'
 200. A Very Nice Slimline Set of Book / Display Shelves
 201. A Very Nice Pair of Continental Porcelain Groups 'Cherubs' and 'Chariots'
 202. A Pair of Bronze Dogs
 203. A Royal Doulton Character Jug 'Town Crier'
 204. A Royal Doulton Character Jug 'Tchaikovsky'
 205. A Walnut Lift Top Fitted Sewing Box
 206. A Collection of Waterford Crystal
 207. A Rectangular Floor Rug
- ## Living Room
208. A Watercolour 'Still Life' – Sam Murray
 209. A Very Fine Inlaid Mahogany Occasional Table
 210. A Pair of Antique Chamber Sticks
 211. A Wooden Treen Bowl
 212. A Royal Worcester Flatback Large Jug
 213. A Royal Worcester Flatback Large Jug
 214. A Royal Worcester Bowl
 215. A Royal Worcester Decorated Bowl
 216. A Royal Worcester Hand Painted Vase of Roses
 217. A Rare Blackpool Whistle Jug and Its Provenance
 218. A Shelley Two Handled Cup 'The Royal Princesses' and Another Two Handled Souvenir Cup
 219. A Beswick Hunt 'Pony and Rider'
 220. A Rare Framed Early Continental Decorated Plaque
 221. A Pair of Silver Plated Candlesticks and a Magnifying Glass
 222. An Octagonal Inlaid Walnut Occasional Table
 223. A Heavy Tyrone Crystal Footed Bowl
 224. A Large Royal Worcester Jardinière
 225. A Three Piece Marble Clock Set
 226. A Very Good Rectangular Floor Rug
 227. A Bamboo Table
 228. A Brass Fender, Tongs and Poker
 229. A Parian Figurine 'Water Carrier'
 230. A Parian Figurine 'Young Man'
 231. A Pair of Royal Worcester Figurines



199



200



205



210



212



218



219



223



224



229



230



232



234



237



238



239



245



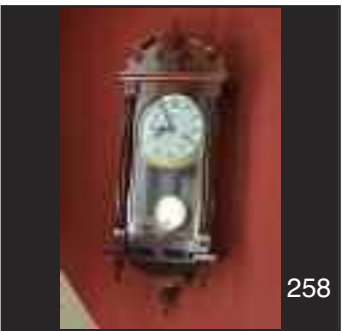
248



250



254



258



260



262



266

232. A Royal Worcester Figurine 'The Shepherd'
233. An Unusual Porcelain Figurine 'Young Gent'
234. A Pair of Georgian Brass Candlesticks
235. A Pair of Carved Hardwood Vases
236. A Mahogany Nest of Two Tables
237. A Mahogany Two Drawer Unit
238. A Watercolour 'Mulroy Bay' – G W Morrison
239. A Watercolour 'Kilkeel' – J W Carey
240. A Gilt Framed Wall Mirror
241. A Royal Worcester Plate
242. Four Pieces of Gossware
243. A Large Imari Charger
244. An Oak T V Cabinet and a Small
Flatscreen TV
245. An Early Mahogany Music Chair
246. A Watercolour 'Leeanne, Connemara' –
Signed George Farrell
247. A Spinning Wheel Table Lamp
248. A Cloisonné Pebble Ornament
249. A Yewood Miniature Chest
250. A Nice Leather Three Seater Settee and
a Matching Leather Chair
251. A Lot of Three Hummel Figurines
252. A Walnut Wine Table
253. A Good Leather Upholstered Footstool
254. An Ecclesiastical Silver Plated Candle Stand
255. A Nice Nest of Inlaid Mahogany Tables
256. A Brass Bound Porcelain Basket
257. A Standard Lamp and Shade
258. A 31 Day Wall Clock
259. A Mahogany Sutherland Table
260. A Very Nice Pair of Royal Dux Figurines
- Entrance Hall**
261. A Royal Doulton Figurine 'Slap Dash'
262. A Pair of Clarice Cliff Candlesticks
263. A Royal Worcester Comport
264. An Early Spode Blue and White Dish
265. An Inlaid Mahogany Corner Cupboard
266. A Superb Edwardian Inlaid Mahogany
Barometer
267. An Antique Foot Scraper
268. A Large Gilt Framed Wall Mirror
269. An Oil Painting 'Boglands Near Letterfrack'
– Manson Blair
270. A Very Nice Mahogany Framed Three
Seater Bench
271. A Pair of Regency Mahogany Side Chairs
272. A Brass Bound Tea Caddy
273. An Inlaid Lidded Box
274. A Pair of Large Cloisonné Vases
275. A Very Good Pair of Gilted Brass
Horses and their Handlers
276. A Fine Victorian Hand Painted Serves Plate
277. A Superb Watercolour 'Linnett' –
Julian Friars
278. A Gouache 'Sailing Boat' –
Markey Robinson
279. A Large Brass Mantel Clock
280. A Very Fine Pair of Royal Worcester
Figurine Based Candlesticks
281. A Georgian Mahogany Sideboard
282. A Chairmans Mahogany Gavel
283. A Watercolour 'Carrick a Rede Rope Bridge'
– Martin Hasson
284. A Brass Carriage Clock
285. A Very Good Early Masons Ironstone
Dinner Set
286. An Early Brass Bound Log Bucket
287. A Large Oil Painting 'Pheasants in Pursuit'
288. A Very Nice Four Corinthian Pillar Oil Lamp,
Ruby Bowl and Shade
289. A Very Nice Pair of Oak Berger High Backed
Hall Chairs
290. An Irish Mahogany Breakfront Inlaid
Sideboard, Anderson, Stanford and
Ridgeway, Dublin
291. A 19th Century Mahogany Chest of Drawers
292. A Slimline Mahogany Double Weight
Vienna Clock
293. A 19th Century Metal Stick Stand
294. A Silver Mounted Ebony Cane
295. A Silver Mounted Malacca Cane
296. A Silver Mounted Ebony Cane
297. A Silver Mounted Malacca Cane
298. A Glass Handled Walking Stick
299. A Large 19th Century Etruscan Style Vase
300. An 19th Century Inlaid Mahogany Longcase
Clock, Silvered and Brass Moon Dial
301. A Very Nice Inlaid Mahogany Bachelors
Chest
302. A Pair of Heuback Figures
303. A Set of Three Royal Doulton
Bunnykins Figurines
304. A Very Good Early Oak Fall Front Writing
Bureau
305. A Superb Edwardian Inlaid Mahogany Mirror
306. An Oil Painting 'Early Spring, Donegal' –
Robert Eggington
307. A Box of Assorted Carvings



Drawing Room

308. A Music Centre Cabinet and Two Speakers
309. An Expanding Leather Box, Austin of Dublin
310. A Very Fine Carved Chinese Armchair
311. Two Framed Lambeth Conference 2008
Photographs
312. A Gilted Brass Mantle Clock
313. A Baluster Shaped Table Lamp and Shade
314. Two Early Figurine Condiments
315. A Royal Dux Horse
316. Two Gilted Vases and a Ruby Sugar Shaker
317. A Four Shelf Shaped Corner Whatnot
318. A Large Melba Ware Dog
319. A Nice Pair of Cloisonné and Brass Vases
320. An Inlaid Mahogany Oval Occasional Table
321. A Mahogany Fall Front Coal Box
322. A Nice Brass Oil Lamp and Etched
Glass Yellow Shade
323. An Old Hydrometer
324. A Very Nicely Modelled Bronze Rams Head
325. A Mahogany Double Pedestal Writing
Desk, Leather Inset
326. A Leather Covered Swivel Desk Chair
327. An Old Photo Album
328. An Old Gun Powder Book
329. A Nice Volume 'Drakes Drum Songs of
the Sea'
330. A 19th Century Walnut Self Closing Book
Slide with Painted Porcelain Panels by
Manning of Worcester
331. A Nice Volume 'Madame Recarrier and her
Friends' – H Noel Williams
332. An Elephant Folding Table
333. A Circular Copper Bowl
334. A Circular Mahogany Wine Table
335. A Pair of Brass Candle Holders
336. A Royal Doulton 'Flambe' Figurine Veined
337. A Royal Doulton 'Flambe' Figurine Fox
338. A Framed Picture of Chopin's House
339. A Framed Chinese Silk Picture
340. A Very Nice Oval Hand Painted Plaque
'Feeding Time' – Francis Clark
341. A Very Nice Rectangular Hand Painted
Plaque 'The Duck Girl' – Francis Clark
342. A Pair of Watercolour 'Landscapes' –
Signed
343. An Oil Painting 'The Dun River' –
Charles McAuley
344. A 19th Century Bristol Blue Trumpet
Ear Piece
345. A Crown Derby Figure 'Shoe Shine Boy'
346. A Soapstone Monkey Group
347. Three Crystal Bells
348. A Galway Crystal Bowl
349. A Mahogany Oval Table
350. A Very Nice Inlaid Mahogany Side Cabinet
351. An Antique Pole Screen
352. A Modern Standard Lamp and Shade
353. A Pair of Bronze Vases
354. A Pair of Crystal Candlesticks
355. A Mahogany Etagere
356. A Dresden Figurine Group
357. A Dresden Figurine Group
358. An Old Toby Jug
359. A Silver Plated Rectangular Box
360. A Very Nice Shaped Front Walnut
Leather Top Small Desk
361. An Old Blue and White Delph Tureen
362. A Hummel Figurine 'The Goat Girl' and
Another Hummel Figurine
363. An Oil Lamp, Painted Pink Bowl and Shade
364. A Figurine of an English Fowl
365. A Nice Mahogany Astragal Glazed
Display Cabinet
366. A Large Royal Vienna Ewer
367. A Cauldon Hand Painted Loving Cup
368. A Cantonese Bowl
369. A Nice Hand Painted Porcelain Vase
370. A Large Bronze Figurine 'Dogs' on
Marble Base
371. Two Nicely Carved Figurines
372. A Nice Cloisonné Lidded Vase
373. A Nice Gilt Framed Bevelled Glass Wall
Mirror
374. An Antique Chinese Cherrywood and
Marble Torchere
375. An Antique Chinese Cherrywood and
Marble Torchere
376. A Jewelled Noritake Vase
377. A Royal Worcester Jug
378. A Royal Worcester Vase
379. A Royal Worcester Decorated Bud Vase
380. A Pair of Royal Worcester Jugs
381. A Royal Worcester Flatback Decorated Jug
382. A Royal Doulton Figurine 'Buttercup'
383. A Royal Doulton Figurine 'Fair Maiden'
384. A Royal Doulton Figurine 'Fair Lady'
385. A Three Piece Suite, 2,3 Seater Settees
and a Matching Two Seater Settee
386. A Victorian Rosewood Rise and Fall Stool
387. An Inlaid Mahogany Wine Table



315



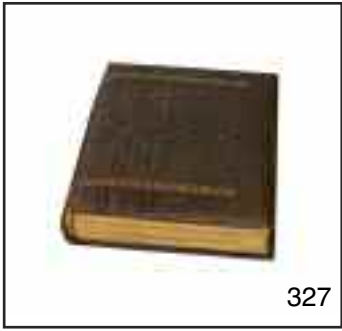
322



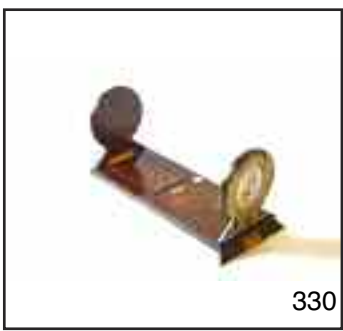
324



326



327



330



336



338



340



341



343



344



345



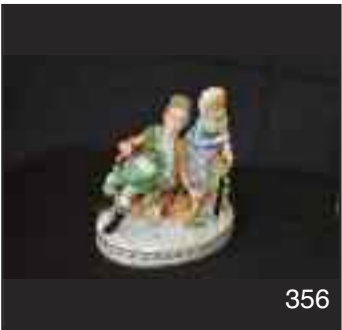
346



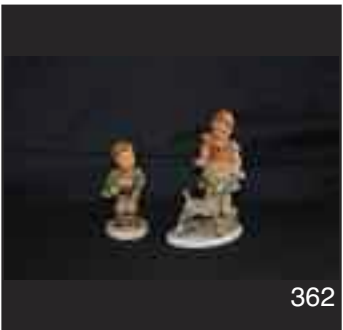
350



355



356



362



363



365



367



369



370



374

388. An Old Stamp Album
 389. A Mahogany Nest of Three Tables
 390. A Victorian Rosewood Gents Chair
 391. A Japanese Pottery Carp
 392. A Very Nice 'Master Cutters'
 Waterford Crystal Oval Bowl
 393. A Nice Inlaid Mahogany Occasional Table
 394. A Nice Pair of Decorated Table Lamps
 and Shades
 395. A Very Nice Rosewood Turn Over Leaf Card
 Table, Carved Pedestal
 396. A Superb Pair of Continental Porcelain
 Two Handled Lidded Vases
 397. A Nice Framed Coloured Print
 'The Procession'
 398. A Figurine Handled Sylvac Jug
 399. A Gilted Metal Framed Two Handled Dish
 400. An Oil Painting 'In the Glens'
 James Humbert Craig
 401. A Painted Glass Vase, Signed Clio
 402. A Pierced Brass Fender
 403. A Very Good Set of Three Brass Fire Irons
 404. A Rosewood Firescreen
 405. A Superb Brass Helmet Shaped Coal
 Scuttle and Matching Shovel
 406. A Very Nice Moorcroft Table Lamp
 and Shade
 407. A Vienna Portrait Vase
 408. A Cantonese Cup and Saucer
 409. A Pencil Drawing – Hugh Rooney
 410. A Very Nice Three Piece Marble Clock Set
 411. A Moorcroft Vase, 'Comfrey' Patter
 412. A Moorcroft Vase, 'Anna Lily' Pattern
 413. An Unusual Framed Moorcroft Wall Plaque
 414. A Large Victorian Imari Charger
 415. A Mahogany Turn Over Leaf Tea Table,
 Centre Pedestal
 416. A Box of Dominoes
 417. A Royal Worcester Figurine 'Mondays
 Child is Fair of Face' by F G Doughty
 418. A Royal Worcester Figurine 'Jonnie' –
 by F G Doughty
 419. A Royal Worcester Figurine 'Burmah' –
 by F G Doughty
 420. A Watercolour 'Fairhead, Ballycastle' –
 Maurice C Wilks
 421. A Pencil Sketch 'The Old Homestead' –
 Maurice C Wilks
 422. A Watercolour 'Shankill Parish Church
 Lurgan'
 423. A Good Violin in Case

424. A Good Violin in Case
 425. A Very Good Brass Standard Lamp
 and Shade
 426. Two Unframed Daniel Campbell Prints
 427. A Lot of Old Beatles Memorabilia
 etc

Stairs and Landing

428. An Oak Drop Leaf Table
 429. A Set of Pine Hanging Shelves
 430. A Very Nice Framed Set of Six Stage
 Coach Prints
 431. A Pine Small Desk / Dressing Table
 432. A Small Mahogany Corner Cupboard
 433. A Large Watercolour 'Barensmore Gap,
 Donegal' – J.W Carey
 434. A Mahogany Framed Piano Stool
 435. A Good Linen Basket
 436. A Mahogany Towel Rail
 437. A Large Capodimonte Rooster
 438. An Edwardian Painted Mahogany
 Window Seat
 439. A Taxidermy of Birds Under Dome
 440. A Very Nice Inlaid Kingwood Gilt Mounted
 Cabinet, Marble Top
 441. A Royal Doulton Figurine 'Balloon Lady'
 442. A Royal Doulton Figurine 'Balloon Man'
 443. A Royal Doulton Figurine 'Biddy Penny
 Farthing'
 444. A Royal Doulton Figurine 'Fortune Teller'
 445. A Royal Doulton Figurine 'The Professor'
 446. A Royal Doulton Figurine 'Omar Khaygan'
 447. A Royal Doulton Character Jug 'Norther
 American Indian'
 448. A Royal Doulton Figurine 'Summer Rose'
 449. A Watercolour 'Friday Night Sing Song' –
 Joseph Stocks
 450. A 19th Century Rosewood Upholstered
 Settee
 450A A Giltwood Overmantle
 451. A Very Early Elm Chair
 452. A Pair of Large Noritake Vases
 453. A Very Nice Sized Slimline Mahogany
 Dressing Table Mirror
 454. A Georgian Bow Fronted Side Table
 455. An Oil Painting 'In the Water' – T Crosby
 456. A Mahogany Turn Over Leaf Card Table
 457. A Watercolour 'Antrim Coast Road'
 – Sam McLarnon
 458. A Watercolour 'Dunluce Castle'
 – Sam McLarnon



376



378



379



380



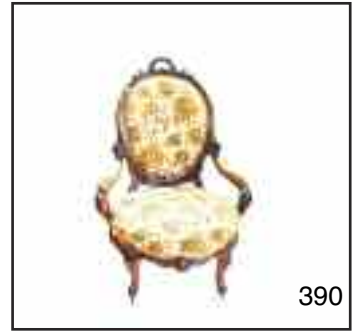
381



385 Suite



388



390



392



395



396



400



403



404



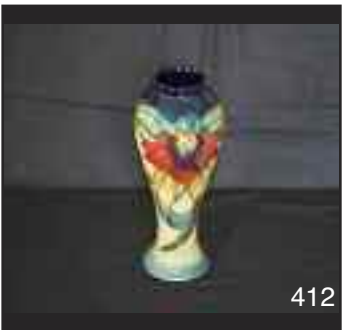
405



409



410



412



415



417-419



420



422



423



425

459. A Watercolour 'Whitepark Bay' –
G W Morrison
460. A Watercolour 'Co.Donegal' –
Wycliff Egginton
461. A Nice Pottery Jug and Basin
462. A Mahogany Piecrust Table Centre Pedestal
463. A Small Oak Table
464. An Early Copper Bound Jug

Bedroom 1

465. A Pair of Inlaid Mahogany Bedroom Chairs
466. A 19th Century Mahogany Dressing Mirror
467. A 19th Century Inlaid Mahogany Chest
of Drawers
468. A Pair of Gilt Framed Prints – Signed
469. A Painted Four Drawer Chest
470. A Gilt Framed Wall Mirror
471. A Pokerwork Plaque 'Cupid'
472. An Austrian Porcelain Table Lamp
and Shade
473. A Brass Corinthian Pillar Standard
Lamp and Shade
474. A Noritake Dressing Table Set
475. A Carved Camphorwood Trunk
476. A Good Rectangular Rug
477. A Mahogany Wheel Back Armchair
478. A Royal Crown Derby Pheasant
479. An Oak Circular Table and A White
Painted Table
480. A Mahogany Duchess Dressing Table
481. A Very Nice Shaped Upholstered Dressing
Table Stool
482. A Snap Top Occasional Table,
Centre Pedestal
483. A Framed Print 'Feeding Time' –
Maurice C Wilks
484. A Pine Two Door Wardrobe
485. A Victorian Mahogany Framed Armchair
486. A High Back Berger Chair
487. A Watercolour 'Ballycastle' –
Paul McClenaghan
488. A Mahogany Armchair

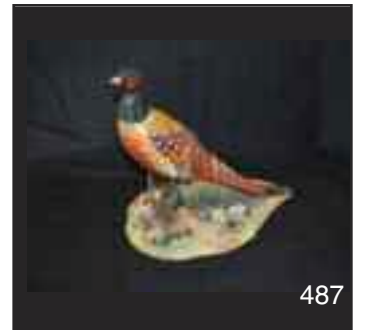
Master Bedroom

489. A Walnut Wardrobe and Two Bedside
Cabinets
490. A Very Nice Pair of Large Framed Prints
'A Tempting Bait' and 'Well Done'
491. A Pair of 'C Monet' Limited Edition
Porcelain Plaques
492. Two Glass Mirrors and a Coffee Table
493. A Good Upholstered Ladies Chair
494. A Brass Bound Mahogany Trunk

495. A Mahogany Cheval Mirror
496. A Circular Mahogany Occasional Table
497. A Pair of Antique Mahogany Armchairs
498. An Inlaid Mahogany Dressing Table
499. A Copper and Brass Plaque
500. A Very Nice Upholstered Five Piece
Carved Back Suite
501. A Pair of Art Nouveau Brass Candlesticks
502. A 19th Century Inlaid Rosewood
Occasional Table
503. A Very Nice Pair of Continental Porcelain
Figurine Candlesticks
504. A Large Circular Decorated Earthenware
Dish
505. A Mahogany Standard Lamp and Shade
506. A Watercolour 'North Antrim Coast'
– R Spotten
507. A Watercolour 'Atlantic Drive, Donegal' –
Frank Murphy (Frank McKelvey JNR)
508. A Pair of Satsuma Vases
509. A Blue and White Footbath
510. A Mahogany Concave Side Table
511. An Early Gilt Framed Wall Mirror
512. A Watercolour 'Portbradden' –
Paul McClenaghan
513. An Oil Painting 'River Scene' – Georgina
514. A Gilt Framed Wall Mirror
515. A Pair of Walnut Topped Bedside Cabinets,
Marble Tops
516. A Nice Oval Mahogany Occasional Table
517. A Large Circular Coffee Table
518. A Nice Upholstered Armchair
519. A Mahogany Circular Three Tier
Dumb Waiter

Bedroom 3

520. A Nice Mahogany Dressing Mirror
521. A Two Door Modern Wardrobe
522. A Brass Table Lamp and Shade and
Two Others
523. A Watercolour 'The Glen, Dunlewy, Errigal'
– J W Carey 1936
524. A Very Nice Inlaid Mahogany Corner
Cupboard
525. A Very Nice Pair of Inlaid Kingswood
Bedside Chests, Marble Tops
- 525A. An Inlaid Mahogany Bedstead
526. A Pair of Inlaid Mahogany
Upholstered Chairs
527. A Set of Three Ceremonial Swords
528. A Two Seater Wing Backed Settee
529. Two Wooden Small Units



530. A Good Inlaid Mahogany Sofa Table,
Makers Wylie & Lockhead, Glasgow
531. A Nice Upholstered Armchair
532. A Very Good Brass and Metal Fender
533. An Edwardian Inlaid Mahogany Chair,
Maker Robert Watson, Belfast
534. An Unusual Enamel on Copper Plaque
535. A Very Nice Royal Grafton 'Sumatra'
Dinner Set
536. An Inlaid Mahogany Open Armchair
537. An Inlaid Mahogany Tripod Table
538. An Old Boomerang
539. A Framed Set of Four Viking Bronze Fibulae
540. An Old English Pottery Jug and Basin Set
541. A Walnut Bedside Cabinet
542. An Oil Painting 'The Old Waterwheel' –
Isobel Whittle
543. A Good Rectangular Floor Rug
544. An Antique Carved Chinese Opium Table
545. A Good Box of Linen
546. A Mahogany Chair by James Schoolbred,
London
547. An Alabaster Mantle Clock
548. A Watercolour 'Mending Nets' –
Martin Hasson
549. A Good Pair of Candlesticks
550. A Very Good Set of Brass Fire Irons
and Dogs
- 550A. A Mesh Firescreen
551. An Inlaid Mahogany Single Chair
- Bedroom 4**
552. A George III Style Mahogany Mirror
553. A Yewood Slimline Bookcase
554. A Mahogany Two Door Bookcase
555. A Framed Print 'Boats in Harbour'
556. An Oil Painting 'O'Connells Bridge' –
Marie Carroll
557. A Mahogany Standard Lamp and Shade
558. A Set of Six Mahogany Framed
Upholstered Chairs
559. An Old Office Swivel Chair
560. An Edwardian Inlaid Mahogany Bureau
561. A Tapestry Top Stool
562. A Small Two Door Collectors Cabinet
563. A Nice Inlaid Mahogany Corner Washstand
564. A Five Piece Pottery Wash Set
565. An Oil Painting 'Seaside Living' –
Robert Egginton
566. A Very Nice Mahogany Cased Wall Bracket
567. An Unframed Sketch Drawing 'The Critic'
568. A Porcelain Candlestick and a Belleek Vase

569. A Royal Doulton Figurine 'Charlotte'

Outside

- A A Cast Metal Garden Bench
- B A Long Cast Metal End Garden Bench
- C A Stone Bird Bath
- D A Very Nice Pair of Planted Pots
- E A Set of Four 'Lion' Garden Ornaments
- ## Cabinets
570. A Silver Plated Spirit Kettle
571. A German Photographic Accessory
572. A Very Nice Crumb Tray and Brush
573. A Gilted Chalice, Two Goblets and A
Circular Tray
574. A Cased Set of Napkin Rings, Silver Plated
Figurine, Preserve Dish, Cutlery,
Serving Forks etc
575. A Silver Mounted Tortoise Shell Desk Blotter
576. A Four Piece Silver Communion Set,
London 1891
577. A Three Piece Silver Communion Set,
Birmingham 1907
578. A Three Piece Silver Communion Set,
London 1907
579. A Three Piece Silver Communion Set,
London 1905
580. A Very Fine Silver Figurine 'Noahs Ark'
581. A Set of Five Silver Coffee Spoons
582. A Very Nice Set of 34 Silver Plated
Commemorative Presidential Spoons,
Willie Rodgers
583. A Large Silver Tankard. Sheffield 1974
584. A Superb Art Deco Silver Toast /
Letter Rack, Sheffield 1925, Cooper Bros.
585. A Silver Coffee Pot, London 1875 and a
Similar Coffee Pot
586. A Victorian Silver Jug and Bowl,
Birmingham 1900
587. A Curved Silver Snuff Box, London 1926
588. An Irish Silver Ladle, Dublin 1830
589. A Set of Irish Silver Tongs, Dublin 1824
590. A Nice Silver Wine Jug, London 1908,
Maker W.J.M Banard
591. A Silver Photo Frame, Chester 1910
592. A Silver Tray, London 1972
593. A Pair of Silver Peppers, Chester 1905
594. A Pair of Silver Cups, London 1971
595. A Silver Spirit Kettle, London 1895, after the
style of Christopher Dressen
596. A Silver and Glass Handle Server,
London 1908



517



518



519



520



523



525



525A



530



531



535



539



542



552



554



556



560



563



565



A



B



576



580



582



584

597. A Large Silver and Crystal Dish, Birmingham 1905
598. Six Silver Spoons, Sheffield 1931
599. An Irish Silver Sauce Bottle, Dublin 1825
600. A Superb Art Nouveau W.M.F Centrepiece
601. A Silver Apostle Spoon, London 1890
602. A Silver and Enamel Magnifying Glass
603. A Pair of Silver Servers, Sheffield 1923
604. A Pair of Irish Silver Servers, Dublin 1834
605. A Very Nice Silver Snuff Box, Birmingham 1852
606. A Pair of Silver Antler Knife Rests, Birmingham 1803
607. A Silver Condiment Set
608. A Silver Tea Strainer and Stand, Birmingham 1920
609. A Silver Vesta Box, Birmingham 1908
610. An Embossed Silver Sugar Basin, London 1853
611. A Pair of Sugar Tongs, Dublin C1800
612. A Silver And Glass Rectangular Box, Birmingham 1905
613. A Silver Circular Lidded Jewellery Box, Sheffield 1925
614. A Silver Sauce Ladle London, 1813
615. A Superb Silver Vesta Box and Sovereign Holder, Birmingham 1907
616. A Pair of Silver Candlesticks, Sheffield 1915
617. A Set of Irish Silver Tongs, Dublin 1871
618. A Pair of Irish Silver Spoons, Dublin 1818
619. A Silver Handled Cake Slice, Sheffield 1961
620. A Very Nice Victorian Silver Dish, Sheffield 1898
621. Two Silver Match Card Holders, Birmingham 1929
622. A Silver Toast Rack, Sheffield 1932
623. Twelve Silver Knives and Forks, Sheffield 1924
624. A Silver Vesta Box, Birmingham 1919
625. A Superb Very Large IV Silver Snuff Box, Birmingham
626. A Round Silver and Tortoise Shell Frame, Birmingham 1906
627. A Silver Frame, Birmingham 1911
628. A Set of Irish Silver Tongs, Dublin Circa 1800
629. A Silver Match Card Holder, Birmingham 1924
630. A Box Set of Victorian Silver and Mother of Pearl Knives and Forks, Sheffield 1890
631. A Cased Victorian Silver Spoons and Tongs, London 1898
632. A Boxed Set of Spoons, Birmingham 1939
633. A Condiment Spoon, A B Savoy and Sons, London 1855 and a Silver Condiment Spoon, Thomas Whitehouse London
634. A Five Piece Silver Condiment Set, Birmingham 1925
635. A Nice Footed Silver Jewellery Box, Birmingham 1920
636. A Cased Set of Enamel Spoons, Birmingham 1950
637. A Pair of Silver Salts with Liners and Spoons, Birmingham 1987
638. A Silver Sugar Duster, Sheffield 1975
639. A Pair of Silver Salts, London 1861
640. Four Irish Silver Spoons, Dublin 1800,1811,1840 and 1855
641. A Silver Caddy Spoon, London 1815, William Elay and William Fearn
642. A Pair of Silver Napkin Rings 1931, A Silver Napkin Ring 1909 and Another
643. An Unusual Large Victorian Decorative Spoon, Birmingham 1893
644. A Silver Vesta Box, Chester 1908
645. A Cased Fork and Spoon with Celtic Decoration, Sheffield 1935
646. A Pair of Large Silver Plated Vases
647. A Box of Commemorative Coins
648. A Box of Commemorative Coins
649. A Box of Commemorative Coins
650. A 14ct Gold Pendant Watch Chain and T Bar
651. A Very Good 14ct Gold and Sapphire Brooch
652. A Large Silver Decorated Locket
653. A Lorus Ladies Wrist and a Bulova Ladies Wrist Watch
654. A 9ct Gold Cameo Brooch / Pendant
655. A Gents Gold Lanco Watch with Leather Strap
656. A Very Heavy Silver Pendant and Chain
657. An 18ct Gold and Platinum Three Diamond Ring
658. An Irish Silver Pendant and Chain, Dublin 1996
659. An 18ct Opal and Diamond Ring
660. A Very Nice 9ct Gold Gents Watch and Bracelet
661. A Very Nice Ladies Wrist Watch
662. A Heavy Silver Charm Bracelet with 10 Silver Charms
663. A Silver Double Albert Watch Neck Chain
664. A Victorian 18ct Ruby and Diamond Ring
665. A Superb Victorian 14ct Gold Pearl Necklace
666. Three Pocket Watches
667. A Ladies Wrist Watch and Beads



585



590



591



595



596



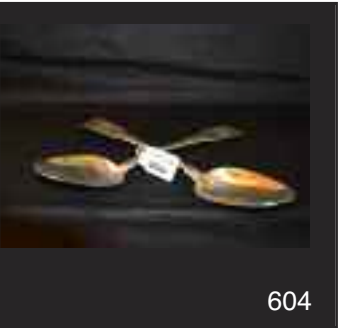
598



600



601



604



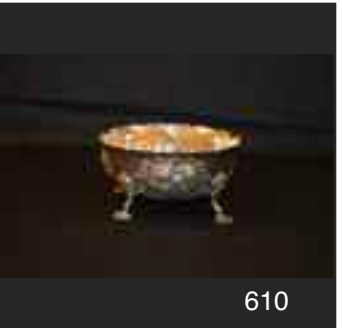
605



606



608



610



611



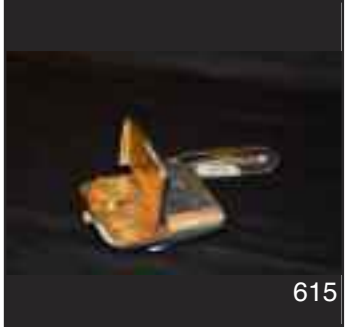
612



613



614



615



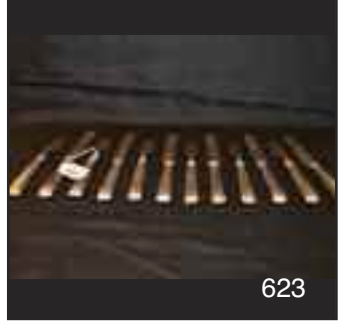
616



620



621



623



625



626



Conditions

1. The highest approved bidder shall be the purchaser. The Auctioneer reserves the right to refuse any bid, and should any dispute arise between two or more bidders, the lot or lots in dispute shall be put up again, or not, and resold at the discretion of the Auctioneer, or the auctioneer may declare the purchaser. The Auctioneer reserves the right to bid on behalf of the vendor up to and including any reserve price placed on any lot and to alter, divide, group or withdraw any lot or lots either before or at any time during the sale.
2. The Auctioneer shall regulate the bidding and no bid shall be retracted.
3. Every purchaser shall give his name and place of abode, in default of which the Auctioneers shall have the power to resell at once, or afterwards as they may think fit.
4. Each bidder shall be supposed to have seen and to be thoroughly acquainted with the contents and conditions of the lot or lots on which he may bid, and no allowance whatsoever will be made for any faults, imperfections or errors of any description. The measurements and quantities described in the Catalogue are believed to be correct and must be taken as such. The purchaser being held to have satisfied himself as to measurements and quantities and other specifications in the Catalogue before bidding, neither will the Auctioneers or the Vendors be responsible for any lot or parts of any lot after the fall of the hammer, from which time all lots purchased are at the risk of the Purchaser.
5. The Auctioneers or the Vendors do not guarantee the measurements catalogued, or the correct description, genuineness or authenticity of any lot.
6. Each purchaser shall pay the whole amount of his purchase money (Auctioneer's Commission payable by purchaser) for all lots bought by him before any lot or lots can be removed and the whole amount due from each purchaser must be absolutely paid on each day of the sale and if not paid within such time, all moneys deposited in any part payment shall be absolutely forfeited and the Auctioneers will be at liberty to resell the lot or lots or any parts thereof remaining un-removed, by Public Sale or otherwise, without giving previous notice to the purchaser and any difference or deficiencies which may arise from, such re-sale, together with all expenses attending the same shall be made good by the purchaser.
7. The lots are sold with all faults and errors of description. No allowance can be made in any case, nor will the Vendors be answerable for any deficiencies in quantities or

measurements when the purchaser, his agent, carrier or man employed by him has removed any part of his lot or lots from the premises. All lots purchased must be removed absolutely in the time specified and if not so removed may be resold by the Vendors.

8. The Purchaser shall be answerable for all damages occasioned by any injury or other lots, by the removal of lots purchased by them, or to the premises and to repair or pay damages to the owners of same before the removal of their lots from the premises. In the event of any persons interested in the premises, claiming the whole or any part of a lot before its removal there from or if in the Auctioneer's opinion, the removal of any lot will endanger or permanently damage any building, the Auctioneer may, by written notice to the purchaser of such lot delivered to him or his Agent, or sent by post to his abode or place of business last known to the Auctioneers, rescind the sale of any such lot. The purchaser shall then be repaid his purchase money but shall not have or make any other claim.

9. Such lot or lots as are not cleared away agreeably to the condition of this sale, will not only be forfeited and may be dealt with under last condition, but the purchaser shall pay every expense attending the removal of any such lot or lots, and the costs of making good any damage occasioned by such removal. No lots shall be removed until the day following the last day of sale.

10. If any dispute or difference arises about any lot, or any other subject, the same shall be settled by the Auctioneers, with the approval of the Vendors, whose determination shall be final and binding on all parties concerned.

11. The Auctioneers nor the Vendors do not accept any liability for personal injuries of any description sustained or caused by any reason whatsoever by any person while on the premises or otherwise.

12. Purchasers will pay 15% Auctioneers Commission (minimum fee £1) + VAT on the commission.



mcrafee



51 Main Street, Ballymoney, BT53 6AN, Tel: (028) 2766 7669