

A detailed still life painting of various fruits. In the center, a large bunch of white grapes hangs from a vine with green leaves. To the right, there are several red and yellow apples, a purple plum, and a cluster of dark blueberries. The background is a warm, textured wash of brown and gold tones, suggesting a rustic setting. The lighting is soft, highlighting the textures of the fruit skins and the veins of the leaves.

**mcafee**

**Ballymoney**

**Thursday 25th February @ 6.30pm**

# Conditions

1. The highest approved bidder shall be the purchaser. The Auctioneer reserves the right to refuse any bid, and should any dispute arise between two or more bidders, the lot or lots in dispute shall be put up again, or not, and resold at the discretion of the Auctioneer, or the auctioneer may declare the purchaser. The Auctioneer reserves the right to bid on behalf of the vendor up to and including any reserve price placed on any lot and to alter, divide, group or withdraw any lot or lots either before or at any time during the sale.
2. The Auctioneer shall regulate the bidding and no bid shall be retracted.
3. Every purchaser shall give his name and place of abode, in default of which the Auctioneers shall have the power to resell at once, or afterwards as they may think fit.
4. Each bidder shall be supposed to have seen and to be thoroughly acquainted with the contents and conditions of the lot or lots on which he may bid, and no allowance whatsoever will be made for any faults, imperfections or errors of any description. The measurements and quantities described in the Catalogue are believed to be correct and must be taken as such. The purchaser being held to have satisfied himself as to measurements and quantities and other specifications in the Catalogue before bidding, neither will the Auctioneers or the Vendors be responsible for any lot or parts of any lot after the fall of the hammer, from which time all lots purchased are at the risk of the Purchaser.
5. The Auctioneers or the Vendors do not guarantee the measurements catalogued, or the correct description, genuineness or authenticity of any lot.
6. Each purchaser shall pay the whole amount of his purchase money (Auctioneer's Commission payable by purchaser) for all lots bought by him before any lot or lots can be removed and the whole amount due from each purchaser must be absolutely paid on each day of the sale and if not paid within such time, all moneys deposited in any part payment shall be absolutely forfeited and the Auctioneers will be at liberty to resell the lot or lots or any parts thereof remaining un-removed, by Public Sale or otherwise, without giving previous notice to the purchaser and any difference or deficiencies which may arise from, such re-sale, together with all expenses attending the same shall be made good by the purchaser.
7. The lots are sold with all faults and errors of description. No allowance can be made in any case, nor will the Vendors be answerable for any deficiencies in quantities or measurements when the purchaser, his agent, carrier or man employed by him has removed any part of his lot or lots from the premises. All lots purchased must be removed absolutely in the time specified and if not so removed may be resold by the Vendors.
8. The Purchaser shall be answerable for all damages occasioned by any injury or other lots, by the removal of lots purchased by them, or to the premises and to repair or pay damages to the owners of same before the removal of their lots from the premises. In the event of any persons interested in the premises, claiming the whole or any part of a lot before its removal there from or if in the Auctioneer's opinion, the removal of any lot will endanger or permanently damage any building, the Auctioneer may, by written notice to the purchaser of such lot delivered to him or his Agent, or sent by post to his abode or place of business last known to the Auctioneers, rescind the sale of any such lot. The purchaser shall then be repaid his purchase money but shall not have or make any other claim.
9. Such lot or lots as are not cleared away agreeably to the condition of this sale, will not only be forfeited and may be dealt with under last condition, but the purchaser shall pay every expense attending the removal of any such lot or lots, and the costs of making good any damage occasioned by such removal. No lots shall be removed until the day following the last day of sale.
10. If any dispute or difference arises about any lot, or any other subject, the same shall be settled by the Auctioneers, with the approval of the Vendors, whose determination shall be final and binding on all parties concerned.
11. The Auctioneers nor the Vendors do not accept any liability for personal injuries of any description sustained or caused by any reason whatsoever by any person while on the premises or otherwise.
12. Purchasers will pay 15% Auctioneers Commission (minimum fee £1) + VAT on the commission.

**Bid online via [easyliveauction](http://easyliveauction.com) -  
Please register early -  
See terms & conditions.**

[easyliveAuction.com](http://easyliveAuction.com)





# Ballymoney

Antique & General Furnishings, Paintings Clocks & Collectibles  
**Thursday 25th February @ 6.30pm**



View entire catalogue on [www.easyliveauctions.com](http://www.easyliveauctions.com) where you may also view the sale and bid live on the evening of the sale.

Bids may also be left and telephone bookings can be arranged

\*\* Delivery of purchases via courier – no private collections.

[easyliveAuction.com](http://easyliveAuction.com)



Telephone Number During Viewing & Sale  
**(028) 2766 7669 / 07860474956**



|    |  |    |  |
|----|--|----|--|
| 1  | A Legends Quartz Clock   | 45 | A Very Good Smokers Armchair   |
| 2  | A Nice Pair of Pine Stools   | 46 | A Very Good Smokers Armchair   |
| 3  | A Nice Inlaid Pair of Mahogany Chairs,<br>Tapestry Seat            | 47 | Two Daggers in Sheaths   |
| 4  | A Bevelled Glass Mahogany Framed<br>Overmantle                     | 48 | A Dressing Table Tray and a Pair of<br>Candlesticks  |
| 5  | A Good Pine Kitchen Armchair                                       | 49 | A Brass Based Oil Lamp and Brown<br>Glass Shade  |
| 6  | A Nice Framed Print 'Mother and Child'<br>after, Bertha Valkenburg | 50 | A Very Good Pair of Gilted Based<br>and Marble Top Tables  |
| 7  | A Watercolour 'Whiterocks' -<br>Sam McLarnon                       | 51 | A Small Brass Hanging Lamp   |
| 8  | A Watercolour 'Fairhead' - Sam McLarnon                            | 52 | A Ceramic Footed Shell Style Small Bowl  |
| 9  | An Old Set of Doctors Forseps                                      | 53 | Four Volumes 'The 2nd Great WW' and<br>a Volume 'The Medical Practioner 1942'                      |
| 10 | Two Sets of Salter Hanging Scales                                  | 54 | Seven Interesting Volumes<br>'University Course'   |
| 11 | An Assorted Box of Cutlery   | 55 | A Nice Pair of Walnut Beside Cabinets  |
| 12 | A Pair of Brass Candlesticks, Shovel etc                           | 56 | A Long John Style Coffee Table   |
| 13 | A Good Box of Silver Plated<br>Serving Spoons etc                  | 57 | A Box of Silver Plate  |
| 14 | A Good Part Canteen of Bone Handled<br>and Other Cutlery           | 58 | A Very Old Five Branch Candleabra, a/f   |
| 15 | A Mahogany Chest of Four Drawers                                   | 59 | A Dublin Soda Syphon, A Belfast<br>Soda Syphon etc   |
| 16 | A Lot of Four Wall Plates 'Carousel<br>of Dreams'                  | 60 | A Very Good Oak Extending Dining Room<br>Table including Six Upholstered Chairs<br>inc Two Carvers |
| 17 | A Nice Upholstered Fall Front Piano Stool                          | 61 | A Matching Leaded Glass Door Oak<br>Display Unit   |
| 18 | A Nice Print 'Sailing Boats'                                       | 62 | An Oak Hall Chair  |
| 19 | A Nice Mahogany Framed Single Chair                                | 63 | An Arthur Price Canteen of Cutlery   |
| 20 | A Gilt Framed Coat of Arms, 'Limavady'                             | 64 | A Lot of Six Heritage Formula Small Cars   |
| 21 | Two Lots of Horse Brass and Two<br>Lustre Jugs                     | 65 | An Oil Painting 'The Twelfth Morning' -<br>Kenlito   |
| 22 | A Small Pine Childs Chair  | 66 | An Oil Painting 'Good Companions' -<br>Margaret Dickson  |
| 23 | A J Wallis and Sons Brass Bugle                                    | 67 | A Pine Magazine Rack and a Dressing<br>Table Stool   |
| 24 | A Nice Gilt Framed Upholstered Chair                               | 68 | A Very Nice Set of Four Framed 'Hunting<br>Scene' Prints   |
| 25 | An Oil Painting 'The Boatyard' -<br>Jack R Moulden                 | 69 | A Heavy Gilt Framed Picture 'The Corn<br>Store, Dog Leap' - Chris Doorish                          |
| 26 | An Oil Painting 'Landscape' - Signed                               | 70 | A Nice Mahogany Cased Double Weight<br>Vienna Wall Clock   |
| 27 | An Upholstered Stool   | 71 | An Empire Pottery Teaset and<br>Other Pieces   |
| 28 | A Walnut Bedside Cabinet   | 72 | A Silver Plated Entre Dish and a<br>Silver Plated Teapot   |
| 29 | A Lot of Four Nicely Framed Prints,<br>'History of Fashion'        | 73 | A Sundry Lot of a Decorated Dish and a<br>Royal Winton Leaf Dish etc                               |
| 30 | A Very Good Leather Three Seater Settee                            | 74 | An Early Three Piece Ceramic Teaservice  |
| 31 | A Nicely Framed Coastal Print                                      | 75 | An Unusual Crown Devon Bowl and<br>Matching Sandwich Tray  |
| 32 | A Nicely Framed J H Craig Print                                    | 76 | A Nice Old Early Framed Print  |
| 33 | An Oil Painting 'Thatched Living' -<br>J.J. O'Neill                | 77 | A Sundry Lot of a Price Brothers Teapot,<br>Wedgewood etc  |
| 34 | A Free Art Collage 'Star Profit Pays<br>the Bills'                 | 78 | A Good Rectangular Bevelled Glass<br>Wall Mirror   |
| 35 | A Mahogany Nest of Three Tables                                    | 79 | A Very Nice Inlaid Mahogany Open<br>Armchair   |
| 36 | An Old Victorian Jug and Basin Set                                 | 80 | A Very Good Mahogany Gents Valet Stand   |
| 37 | An Austin Figurine 'Lady'  | 81 | A Nice Set of Old Keys   |
| 38 | Two Etched Ruby Glass Tumblers                                     |    |  |
| 39 | A Set of Brass Fire Irons and Dogs                                 |    |  |
| 40 | A Very Nice Shaped Front Small Side Board                          |    |  |
| 41 | A Figurine and Onyx Based Table Lamp<br>and Shade                  |    |  |
| 42 | A Good Mahogany Dressing Mirror,<br>Three Drawers                  |    |  |
| 43 | A Very Nice Mahogany Firescreen,<br>Tapestry Panel                 |    |  |
| 44 | A Gurkha Knife and Scabboard                                       |    |  |



2



3



5



8



15



19



24



25



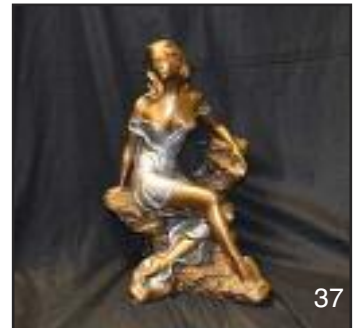
30



33



35



37



40



42



43



48



50



52



54



55



60



61



63



65

|      |   |     |   |
|------|---|-----|---|
| 82   | A Pair of Inlaid Mahogany Chairs  | 117 | A Nice Sized Two Seater Leather Settee  |
| 83   | A Childs Rocking Horse  | 118 | A Box of Bone Handled and Other Cutlery   |
| 84   | Two Lots of Horse Brasses   | 119 | An Oil Painting 'Landscape' -<br>Donal McNaughton   |
| 85   | A Very Nice Pair of Still Lift Pictures<br>After J F Smith  | 120 | A Very Good Hardwood Rocking Chair  |
| 86   | A Watercolour 'The Shore Cottage,<br>island Magee' - Roland Hill  | 121 | A Carved Standard Lamp Base   |
| 87   | A Good Guitar   | 122 | A Large Mahogany Framed Firescreen<br>Tapestry Panel  |
| 88   | A Porcelain Based Oil Lamp and Shade  | 123 | A Very Nice Shaped Mandolin   |
| 89   | An Old Hot Water Bottle and a Pair of<br>Butter Pats  | 124 | A Lot of Beezer Annuals, Beano and<br>Dandy Comics etc  |
| 90   | A Nice Sized Oak Chest of Four Drawers  | 125 | A Very Nice Sized Gilt Framed Button<br>Back Upholstered Settee   |
| 91   | A Lot of Eleven Cigarette Card Albums   | 126 | A Nice Mahogany Two Door Side Cabinet   |
| 92   | A Nice Royal Imperial Bone China Teaset   | 127 | A Gilted Based Table Lamp and Shade   |
| 93   | A Wooden Cased Mantle Clock   | 128 | A Four Piece Silver Plated Tea Service on<br>a Heavy Two Handled Gallery Tray                                       |
| 94   | A Very Good Old Set of Six Pine<br>Kitchen Chairs   | 129 | A Staffordshire Figurine of a Greyhound,<br>A Hummell and Another Figurine  |
| 95   | A Brass Pillar Oil Lamp, Glass Bowl<br>and Etched Shade   | 130 | A Large Gilt Framed Portrait - John H<br>Amos General Manager to the Tees<br>Conservatory Commission -G Fiddes Watt |
| 96   | A Very Nice Small Inlaid Mahogany<br>Mirror Backed Shelf  | 131 | An Early Gilt Framed Oil Painting 'Sunset<br>on the Clyde' - W M Lockhart   |
| 97   | An Oak Barley Twist, Drop Leaf<br>Kitchen Table   | 132 | An Oil Painting 'North Antrim Coast'  |
| 98   | A Mahogany Framed Stool, Tapestry Seat  | 133 | A Watercolour 'Farmyard Friends'  |
| 99   | A Good Childs Pram  | 134 | A Nice Framed J W Carey Print   |
| 100  | A Good Mahogany Two Door Wardrobe   | 135 | An Oak Fall Front Writing Bureau  |
| 101  | An Oil Painting 'Strangford' -<br>Johnston Hill   | 136 | Two Old Brass and Copper Kettles  |
| 102a | A Limited Edition Signed Print<br>'Queen Elizabeth II'  | 137 | A Circular Mahogany Plantstand  |
| 102  | A Watercolour 'Thirlmere'   | 138 | A Marble and Slate Mantle Clock   |
| 103  | A Pair of Lloyd Loom Style Bedside<br>Cabinets  | 139 | An Old Copper Pan, Another and Two<br>Pan Lids  |
| 104  | A Very Good Gilt Metal Based Table<br>Lamp and Shade  | 140 | An Oil Painting 'Hay Making'<br>- Gregory Moore   |
| 105  | A Good Mahogany Cased Circular Dial<br>Long Case Clock  | 141 | A Nice Pair of Mahogany Framed Chairs   |
| 106  | A Cast Metal Corner Stick Stand and<br>Contents   | 142 | A Heart Shaped Table Top Display Cabinet  |
| 107  | A Hanley and Sons Decorated Bowl and<br>Some Collectors Plates  | 143 | An Early Iron Rushlight a/f   |
| 108  | A Circular Topped Three Shelf Whatnot<br>and a Magazine Rack  | 144 | A Ceramic Figurine of a Bull  |
| 109  | A Nice Pair of Gilt Framed Oval Oil<br>Paintings 'Flowers'  | 145 | A Good Mahogany Chest of Five Drawers   |
| 110  | A Gilt Framed Oil Painting on Mirror and<br>Another Oval Mirror   | 146 | A Mahogany Chest of Six Drawers   |
| 111  | A Black and White Etched Print ' Mount<br>Stewart, Co.Down after<br>Gordon McFarland  | 147 | An Unusual Dressing Mirror on Stand   |
| 112  | A Decorated Occasional Table  | 148 | A Good Lot of Three Blow Torches  |
| 113  | A Mahogany Framed Tapestry Top Stool  | 149 | A Bronzed Spelter Figurine  |
| 114  | A Nice Button Back Upholstered Chair  | 150 | A Nice Inlaid Rosewood Music Cabinet  |
| 115  | A Very Nice Marble Topped Circular<br>Mahogany Bedside Cabinet  | 151 | An Oil Painting 'Over the Last' - Sam Murray  |
| 116  | A Lot of Three Volumes 'The Months',<br>'African Statesman' after William<br>Hamilton and 'From one end of the Rainbow' -<br>Frank Somner | 152 | An Oil Painting '-Ruby Walsh' - Sam Murray  |
|      |   | 153 | A Rare Greek Plaque of a Gents Head   |
|      |   | 154 | A Violin in Case  |
|      |   | 155 | A Very Nice Pair of Oil Paintings<br>'Sailing Ships'  |
|      |   | 156 | A Pine Lidded Box   |
|      |   | 157 | A Childs Violin in Case   |
|      |   | 158 | A Pine Chest of Five Drawers  |
|      |   | 159 | A Matching Chest of Five Drawers  |
|      |   | 160 | A Very Nice Snap Top Inlaid Walnut<br>Occasional Table, Gilted Mounts   |
|      |   | 161 | An Early Photograph Album   |



69



72



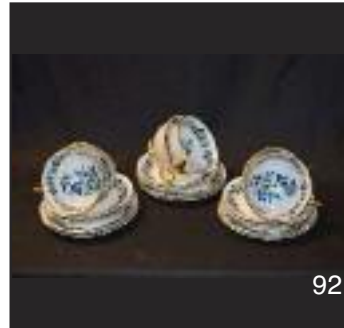
80



85



90



92



101



102



105



114



115



117



123



125



128



130



133



137



141



145



150



155



157



158

|      |  |     |   |
|------|--|-----|---|
| 162  | A Single Mahogany Framed Upholstered Chair                                     | 202 | A Small Circular Minature   |
| 163  | A Good Lidded Trunk  | 203 | A Royal Doulton Figurine 'Fragrance'                                |
| 164  | An Irish Celtic Art Studio Plaque  | 204 | A Royal Doulton Figurine 'Grace'                                    |
| 165  | A Nice Mahogany Cased Vienna Wall Clock  | 205 | A Royal Doulton Figurine 'Seneade'                                  |
| 166  | A Pair of Small Upholstered Stools   | 206 | A Royal Doulton Figurine 'Dinky Do'                                 |
| 167  | A Watercolour 'Rostrevor' - Rodger Sloan                                       | 207 | A Limited Edition Coalport Figurine 'House of Tudor'                |
| 168  | A Mahogany Three Shelf Folding Cakestand                                       | 208 | A Limited Edition Royal Worcester Figurine 'Sweet Primrose'         |
| 169  | A Good Four Fold Painted Screen  | 209 | A Limited Edition Royal Worcester Figurine 'Sweet Forget me Not'    |
| 170  | A Very Nice Circular Display Cabinet   | 210 | A Set of Four Ceramic Figurines                                     |
| 171  | A Nice Gilted and Metal Based Table Lamp and Shade                             | 211 | A Watercolour 'Peaceful Waters' - Wilfred Haughton                  |
| 172  | A Nice Shaped Side and Decorated Coffee Table                                  | 212 | An Oil Painting 'Harbour Ferry' - Kenlito                           |
| 173  | A Lot of Three Small Violins   | 213 | An Inlaid Mahogany Single Chair                                     |
| 174  | An Early View Finder   | 214 | A Nice Shaped Front Mahogany Side Table                             |
| 175  | A Very Good Pair of Early Mahogany Hall Chairs                                 | 215 | A Nice Mahogany Hall Chair  |
| 176  | A Sewing Box and Contents  | 216 | A Nice Set of Four Framed Prints                                    |
| 177  | A Good Leather Rectangular Stool   | 217 | A Pine Slimline Shelved Cabinet                                     |
| 177a | A Nice Lot of Three Cushions   | 218 | A Small Pine Unit, Two Drawers                                      |
| 178  | A Large Six Branch Centre Light Fitting  | 219 | A Pine Slimline Open Bookshelf                                      |
| 179  | A Large Copper Log Bucket, Iron Handle   | 220 | A Lot of Old Ordinance Map  |
| 180  | A Very Good Pair of Upholstered Wing Backed Armchairs                          | 221 | Two Decorated Earthenware Vases                                     |
| 181  | A Nice Four Shelf Mahogany Whatnot   | 222 | An Oynx Mantle Clock  |
| 182  | A Waterford Crystal Vase, Glass Comport etc                                    | 223 | A Nice Collection of Crystal  |
| 183  | Two Good Crystal Decanters   | 224 | A Set of Four Oval Limited Edition Plaques 'Sisters for Life'       |
| 184  | A Crystal Carafe, Tray etc   | 225 | A Set of Four Circular 'Sugar and Spice' Collectors Plates          |
| 185  | A Very Nice Inlaid Mahogany Corner Chair                                       | 226 | An Interesting Sundry Lot Including a Masons Ironstone Lidded Jar   |
| 186  | A Good Lot of Mainly Belleek   | 227 | Three Cavan Crystal Sundae Dishes and Four Stemmed Wine Glasses     |
| 187  | A Floral Pattern Dinner Service  | 228 | A Lot of Crystal Tumblers and Wine Glasses                          |
| 188  | A Nice Bone China Teaset, Part Teaset etc                                      | 229 | A Good Box of Linen   |
| 189  | A Large Lot of Silver Plate  | 230 | An Oil Painting 'Out Walking' - Hugh McIlfratrick                   |
| 190  | An Oil Painting 'Glenveigh, Donegal' - Hugh McIlfratrick                       | 231 | An Oil Painting 'Winter in Central Park' - Kenlito                  |
| 191  | An Oil Painting 'Feeding Time' - Donal McNaughton                              | 232 | A Good Four Fold Upholstered Screen                                 |
| 192  | A Beswick Figurine of a Chaffinch and Another                                  | 233 | A Nice Inlaid Mahogany Open Armchair, Tapestry Seat                 |
| 193  | An Early Wade 'Our Friends are Best' Ashtray and Two 2nd Period Belleek Dishes | 234 | An Inlaid Mahogany Open Armchair, Tapestry Seat                     |
| 194  | A Sundry Lot of a Belleek Vase, Dish Set etc                                   | 235 | A Mahogany Extending Dining Room Table and Matching Eight Chair Set |
| 195  | A Beswick Figurine of a Horse  | 236 | A Brass Gong and Striker  |
| 196  | A Beswick Figurine of a Horse  | 237 | An Unusual Circular Footed Bowl                                     |
| 197  | A Stag Handled Bottle Opener and a Gents Drinks Set                            | 238 | A Nice Hand Painted Jug and Basin Set                               |
| 198  | A Lot of Six Crystal Drinking Glasses and a Crystal Vase                       | 239 | An Unusual Sewing / Jewellery Case                                  |
| 199  | A Large Hummel Figurine 'Tree Trimming Time'                                   | 240 | A Nice Inlaid Mahogany Oval Shaped Coffee Table                     |
| 200  | A Hummel Figurine 'Holiday Harmony' and Another Figurine                       | 241 | A Cavan Crystal Jug and a Galway Cyrstal Dish in Presentation Box   |
| 201  | Two AA Badges  | 242 | A Brass Pillar Oil Lamp, Clear Glass Bowl and Etched Shade          |





163



165



167



168



169



170



172



179



180



181



183



185



190



191



199



200



204



211



212



214



219



230



231



233

|     |   |     |   |
|-----|---|-----|---|
| 243 | A Heavy Crystal Decanter and Four Crystal Tumblers                          | 283 | A Tyrone Crystal Comport  |
| 244 | A Heavy Crystal Fruit Bowl  | 284 | A Clear Glass Finger Lamp Base and a Carved Card Box  |
| 245 | A Very Nice Pair of Upholstered Hall Chairs                                 | 285 | A Large Gilted Mantle Clock   |
| 246 | A Mahogany Wine Table   | 286 | A Six Pillar Slate Mantle Clock   |
| 247 | Two Pieces of Art Glass   | 287 | An Oil Painting 'The Wooded Walk' - R Cochrane  |
| 248 | A Mahogany Nest of Three Tables   | 288 | A Modern Picture 'Suspicious' - Ayeleb  |
| 249 | A Nice Lacquered and Decorated Jewellery Box                                | 289 | An Early Old Kitchen Rocking Chair  |
| 250 | A Nice Circular Mahogany Drum Style Table                                   | 290 | A Very Nice Watercolour 'A Bit of Craigavad Near Belfast' - George Washington Orr                     |
| 251 | An Inlaid Mahogany Mantle Clock   | 291 | A Twinhead Table Lamp   |
| 252 | A Very Nice Inlaid Mahogany Single Chair                                    | 292 | An Oak Four Drawer Collectors Chest   |
| 253 | A Royal Vale Bone China Teaset  | 293 | A Brass Mounted Clock and Barometer   |
| 254 | A Duchess Bone China Teaset   | 294 | A Nice Pair of Decoupage Pictures   |
| 255 | A Royal Albert Bone China ' Silver Maple' Teaset                            | 295 | A Three Piece Pine Bedrrom Suite including Double Bed, Dresssing Table and Three Fold Dressing Mirror |
| 256 | An Unusual Small Pottery Table Lamp   | 296 | A Pine Rise and Fall Stool  |
| 257 | A Similar Larger Pottery Table Lamp on Stand                                | 297 | Two Good Silver Plated Ladles   |
| 258 | An Oil Painting 'Still Life' - Emma Jones                                   | 298 | An Unusual Wall Hanging   |
| 259 | A Nice Set of Three Framed Hunting Scene Prints                             | 299 | A Nice Lot of Three Framed Tapestries   |
| 260 | A Good Mahogany Framed Double End Settee for Restoration                    | 300 | A Watercolour 'The Coast of Ireland' - Robert Eggington   |
| 261 | A Nice Modern Circular Ceiling Light  | 301 | A Large Cantonese Bowl a/f  |
| 262 | AN Oil Painting 'Fairhead' - J.J. O'Neill                                   | 302 | A Watercolour 'Castlerock' - Gareth Giffen  |
| 263 | An Oil Painting 'Lady Fishing' - J.J. O'Neill                               | 303 | A Signed Print - Sir Everton Weekes after Rowel Friers  |
| 264 | A German Collectors Doll  | 304 | A Tyrone Crystal Paper Knife  |
| 265 | A Very Nice Mahogany Framed Open Armchair                                   | 305 | A Large Figurine 'Young Lovers'   |
| 266 | A Good Lot of Crystal Including a Ships Decanter                            | 306 | A Large Nao Figurine 'Lady with Child'  |
| 267 | A Large Collection of Teamsterz Model Cars                                  | 307 | A Nice Gilted and Metal Mantle Clock  |
| 268 | A Large Collection of Minature Bottles and Their Contents                   | 308 | A Tyrone Crystal Paper Knife  |
| 269 | A Large Character Jug and Four Smaller Wedgewood Jugs                       | 309 | A Nice Shaped Front Two Drawer Side Table   |
| 270 | A Nice Inlaid Mahogany Oval Occasional Table                                | 310 | A Good Kings Pattern Canteen of Cutlery   |
| 271 | A Framed Print Anton Pieck and Two Other Smaller Pictures                   | 311 | A Small Portable Iron and an Unusual Set of Scales and a Tape Measures                                |
| 272 | An Unusual Framed Print 'The Guardsman who dropped it' - After H.M. Bateman | 312 | An Early 7up Advert Poster  |
| 273 | A Nice Rectangular Floor Rug  | 313 | A Mahogany Plantstand   |
| 274 | A Hand Painted Oil Lamp Bowl  | 314 | An Interesting Box of Old Annuals   |
| 275 | A Nice Oak Chest of Six Drawers   | 315 | A Vintage Fire Extinguisher   |
| 276 | A Nice Gilted and Decorated Noritake Vase                                   | 316 | A Rarely Used Camping Bed   |
| 277 | An Old Cine Kodak 8 Model 20 Camera   | 317 | A Nice Shaped Side Mahogany Occasional Table  |
| 278 | A Wooden Lidded Box   | 318 | An Early Dentist Cabinet and Contents   |
| 279 | A Canteen of Cutlery  | 319 | A Carved Top Occasional Table   |
| 280 | A Nice Sized Mahogany Two Door Mirror Backed Sideboard                      | 320 | A Snaffles Print 'The Informers'  |
| 281 | A Small Oak Drop Leaf Table   | 321 | A Watercolour 'Landscape' - A Ager  |
| 282 | A Circular Crystal Footed Bowl  | 322 | A Framed Print 'The Dry Arch' - Sam McLarnon  |
|     |   | 323 | A Good Lot of Ten Walking Sticks  |
|     |   | 324 | A Very Good Halfords Cool Box on Wheels, As New   |
|     |   | 325 | A Very Good Lot of 24 Old Chemist Bottles   |
|     |   | 326 | A Royal Doulton Figurine 'Stephanie'  |
|     |   | 327 | A Royal Doulton Figurine 'Janice'   |



235



240



241



242



249



250



254



258



260



263



265



273



275



278



280



281



283



285



290



295



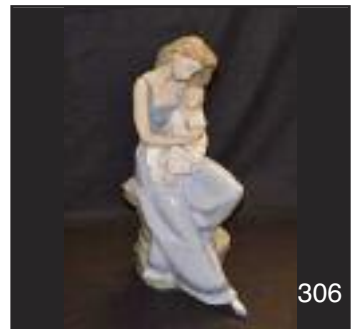
300



302



305



306

|     |  |     |  |
|-----|--|-----|--|
| 328 | A Limited Edition Coalport Figurine 'Millenium Debut'        | 368 | A Large Kesier of Germany Dish and Three Circular Leaf Plates                  |
| 329 | A Very Good Lot of Mainly Shamrock Pattern Belleek           | 369 | A Lot of Six Glass Tumblers  |
| 330 | A Good Meteor Accordion                                      | 370 | A Pair of Tall La Reine Vases  |
| 331 | A Pair of Belleek Vases and Two Other Vases                  | 371 | A Sundry Lot of Plates, Cutlery etc  |
| 332 | A Good Box of Cutlery  | 372 | An Interesting Collection of Motor Racing Books                                |
| 333 | A Large Carton of Gift Boxes                                 | 373 | An Interesting Collection of Motor Racing Books                                |
| 334 | A Very Good Lot of Stair Rod Fittings                        | 374 | An Old Celery Vase and a Pair of Glass Candlesticks                            |
| 335 | A Nicely Framed Tapestry 'Hunting'                           | 375 | A Shaped Side Pin Point Tray   |
| 336 | A Two Handled Planter a/f                                    | 376 | A Pair of Decoupage Pictures and a Sewing Collage                              |
| 337 | A Nice Footed Glass Vase and Two Others                      | 377 | A Nice Tapestry Bell Pull, Gilted Mounts                                       |
| 338 | A Limited Edition Royal Worcester Figurine 'Queen of Hearts' | 378 | A Very Nice Carved Wall Plaque   |
| 339 | A Limited Edition Royal Worcester Figurine 'Sweet Violet'    | 379 | A Limited Edition Royal Doulton Figurine 'Abigail'                             |
| 340 | A Good Lot of Six Cavan Hock Glasses                         | 380 | A Limited Edition Royal Doulton Figurine 'Flirtation'                          |
| 341 | A Good Lot of Six Cavan Wine Glasses                         | 381 | A Set of Six Crystal Wine Glasses  |
| 342 | A Good Lot of Three Crystal Vases and a Ruby Tinted Vase     | 382 | A Nice Set of Six Crystal Stemmed Wine Glasses                                 |
| 343 | A Sundry Lot of Assorted Crystal                             | 383 | A 24ct Gold Decorated Coffee Set   |
| 344 | A Queen Elizabeth II Silver Jubilee Wedgewood Dish           | 384 | A Good Collection of Belleek Vases   |
| 345 | A Early Masonic Acacia Lodge Presentation Glass and Another  | 385 | Two Hand Painted Wall Hangings   |
| 346 | A Good Set of Six Crystal Brandy Glasses                     | 386 | A Silver Plated Lamp Base  |
| 347 | A Small Indian Tree Pattern Teaset                           | 387 | A Hand Painted Animal Skin   |
| 348 | A Sundry Lot of a Masons Ironstone Dish, Ruby Jug etc        | 388 | Two Long Hand Crafted Friezes  |
| 349 | A Nice Mahogany and Gilted Metal Framed Wall Mirror          | 389 | A Small Hand Crafted Framed Panel and Another Similar Panel                    |
| 350 | A Royal Doulton Figurine 'Flower Sellers Children'           | 390 | A Very Nice Set of Three Framed Hand Painted and Decorated Panels              |
| 351 | A Royal Doulton Figurine 'Susan'                             | 391 | A Nice Oval Framed Picture of a Lady   |
| 352 | A Royal Doulton Figurine 'Hostess of Williamsburg'           | 392 | A Gilt Framed Coloured Artists Proof 'Lady Hamilton as Circe' - After G Romney |
| 353 | A Limited Edition Wedgwood Figurine 'Star Scatterer'         | 393 | A Austin Figurine of a Lady  |
| 354 | A Royal Doulton Figurine 'Regal Lady'                        | 394 | An Oak Cased Smiths Mantle Clock   |
| 355 | A Royal Doulton Figurine 'Bride'                             | 395 | A Committi of London Mantle Clock  |
| 356 | A Royal Doulton Figurine 'Isadora'                           | 396 | A Capodimonte Figurine 'The Tramp on Bench                                     |
| 357 | A Tengra Figurine 'Girl with Flower'                         | 397 | A Waterford and a Tyrone Crystal Clock   |
| 358 | A Cecelia Figurine 'The Carnation Maiden'                    | 398 | A Crown Devon Condiment Set  |
| 359 | A Nice Collection of Belleek China                           | 399 | A Royal Winton Flower Holder   |
| 360 | A Nice Pair of Gilt Framed Oil Paintings - David A James     | 400 | A Very Nice Inlaid and Decorated Shaped Front Walnut Credenza                  |
| 361 | A Sundry Lot of Picture Frame, Carving etc etc               | 401 | A Pair of Oil Paintings 'Still Life' - W.Collins                               |
| 362 | A Nice Lidded Box and an Earthenware Jug                     | 402 | An Interesting Cecil Aldin Print   |
| 363 | A Tunstall Vase, A Sylvac and Another Jug                    | 403 | An Oil Painting 'Still Life' - Mango   |
| 364 | A Sundry Lot of Ornaments etc                                | 404 | A Tyrone Crystal Vase  |
| 365 | A Nice Pair of Framed Pictures 'Children'                    | 405 | A Very Nice Gilt and Decorated Lidded Vase                                     |
| 366 | A Large Le Crusset Two Handled Pan                           | 406 | A Tall Arthur Wood Jug   |
| 367 | A Very Unusual Set of Three Art Plaques 'Musicians'          | 407 | A Smaller Arthur Wood Jug  |
|     |  | 408 | A Tyrone Crystal Jug and a Crystal Decanter                                    |
|     |  | 409 | A Royal Worcester Hand Painted Vase  |



307



309



310



312



313



315



317



318



320



321



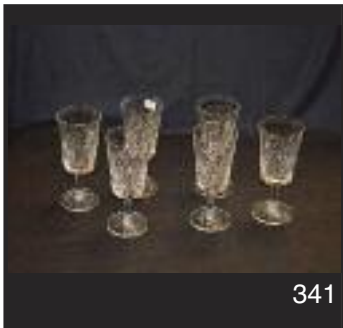
324



330



331



341



349



350



360



369



370



379



381



393



3396



398

- |     |  |     |   |
|-----|--|-----|---|
| 410 | A Nice Pair of Royal Worcester Hand Painted Vases  | 437 | A Silver Plated Comport and other Pieces of Silver Plate                      |
| 411 | A Pair of Royal Dux Figurines  | 438 | A Framed Print 'In Praise of Ermus'   |
| 412 | A Nice Hinged Decorated Lidded Bowl  | 439 | A Watercolour 'Portballintrae' - Jennifer Steen                               |
| 413 | A Very Nice Austrian Porcelain Decorated and Lidded Jar  | 440 | A Very Nice Framed Tapestry 'The Hunting'                                     |
| 414 | A Royal Worcester Figurine 'The Sabbath Child'   | 441 | A Pair of Belleek Vases and Three Other Vases                                 |
| 415 | A Finely Carved Ball on Stand, Under Dome  | 442 | An Interesting Lot of Lidded Glass Dishes, Oval Dish and Pair of Candlesticks |
| 416 | A Tall Worcester Bamboo Handled Jug  | 443 | An Interesting Sundry Lot   |
| 417 | A Nice Set of Six Footed Crystal Drinking Glasses  | 444 | A Glass Comport and Three Other Nice Pieces of Crystal                        |
| 418 | A Nice Set of Six Footed Crystal Drinking Glasses  | 445 | A Lidded La Reine Jar and Six Nice Pottery Tumblers                           |
| 419 | An Early Delph Blue and White Jug  | 446 | A Sundry Lot of Silver Plate  |
| 420 | A Mahogany Longcase Clock, Brass and Silvered Dial, James Whitworth, Lussley   | 447 | A Sundry Lot of Silver Plate and a Medal                                      |
| 421 | A Pair of Noritake Decorated Finger Dishes   | 448 | A Tray and Contents, Perfume Bottles, Purses, Grape Scissors etc              |
| 422 | A Mini Royal Doulton Figurine of a Dog   | 449 | A Box of Watches  |
| 423 | A Pair of Doulton Burselm Decorated Vases  | 450 | A Box of Watches, Costume Jewellery, Wrist Watches etc                        |
| 424 | A Border Fine Art Figurine of a Dog and Another of a Goat  | 451 | A Lot of Cufflinks, Tie Pin, Brooch, Compact etc                              |
| 425 | A Very Nice Mahogany Framed Barometer, Dolland of London   | 452 | An Old Framed Print 'The Defence of McGhee's House' - After Cruickshank       |
| 426 | A Lot of Six Tyrone Crystal Tumblers   | 453 | A Lot of Six Crowns   |
| 427 | A Pair of Tyrone Crystal Vases and Another   | 454 | A 1900 Crown and a Lot of 24 Silver 3 Pences                                  |
| 428 | An Interesting Lot of Books  | 455 | A Lot of Three Crowns, other Crowns and A Northern Bank Medallion             |
| 429 | Three Interesting Books 'Natrure Teaching on the Blackboard , 'Italy it's rivers, lakes and Cities' and 'Universal Geography Volume' | 456 | A Nice lot of Three Masonic Medals  |
| 430 | A Nice Belleek Flower Encrusted Oval Basket  | 457 | A Masonic Tie Pin   |
| 431 | A Set of Five Tyrone Crystal Wine Glasses  | 458 | A Silver Masonic Pill Box   |
| 432 | An Early Spy Print of Rubarb Kipling   | 459 | Two Silver Conditments Birmingham 1934 and Birmingham 1901                    |
| 433 | An Interesting Charcoal Drawing of a Gent - W.S.T. Small   | 460 | A Silver Sauceboat  |
| 434 | A Gilt Framed Print and Another, after Arthur Esley  | 461 | A Silver Sauceboat, Sheffield 1926  |
| 435 | An Interesting Collection of Four Figurines  | 462 | A Very Nice Silver Jug and Basin Set, Sheffield 1900                          |
| 436 | A Crystal Comport and Other Pieces of Crystal  | 463 | A Very Nice 9ct Gold Spahhire and Diamond Ring                                |
|     |  | 464 | A Very Nice 9ct Gold Emerald and Diamond Ring                                 |
|     |  | 465 | A Pair of Silver Earrings   |



400



401



405



409



410



411



413



417



420



423



425



430



440



454



456



457



458



459



460



461



462



463



464



465

# mafee



**51 Main Street, Ballymoney, BT53 6AN, Tel: (028) 2766 7669**