

mcafee



**Thursday 16th September
@ 6.30pm**

Conditions

1. The highest approved bidder shall be the purchaser. The Auctioneer reserves the right to refuse any bid, and should any dispute arise between two or more bidders, the lot or lots in dispute shall be put up again, or not, and resold at the discretion of the Auctioneer, or the auctioneer may declare the purchaser. The Auctioneer reserves the right to bid on behalf of the vendor up to and including any reserve price placed on any lot and to alter, divide, group or withdraw any lot or lots either before or at any time during the sale.
2. The Auctioneer shall regulate the bidding and no bid shall be retracted.
3. Every purchaser shall give his name and place of abode, in default of which the Auctioneers shall have the power to resell at once, or afterwards as they may think fit.
4. Each bidder shall be supposed to have seen and to be thoroughly acquainted with the contents and conditions of the lot or lots on which he may bid, and no allowance whatsoever will be made for any faults, imperfections or errors of any description. The measurements and quantities described in the Catalogue are believed to be correct and must be taken as such. The purchaser being held to have satisfied himself as to measurements and quantities and other specifications in the Catalogue before bidding, neither will the Auctioneers or the Vendors be responsible for any lot or parts of any lot after the fall of the hammer, from which time all lots purchased are at the risk of the Purchaser.
5. The Auctioneers or the Vendors do not guarantee the measurements catalogued, or the correct description, genuineness or authenticity of any lot.
6. Each purchaser shall pay the whole amount of his purchase money (Auctioneer's Commission payable by purchaser) for all lots bought by him before any lot or lots can be removed and the whole amount due from each purchaser must be absolutely paid on each day of the sale and if not paid within such time, all moneys deposited in any part payment shall be absolutely forfeited and the Auctioneers will be at liberty to resell the lot or lots or any parts thereof remaining un-removed, by Public Sale or otherwise, without giving previous notice to the purchaser and any difference or deficiencies which may arise from, such re-sale, together with all expenses attending the same shall be made good by the purchaser.
7. The lots are sold with all faults and errors of description. No allowance can be made in any case, nor will the Vendors be answerable for any deficiencies in quantities or measurements when the purchaser, his agent, carrier or man employed by him has removed any part of his lot or lots from the premises. All lots purchased must be removed absolutely in the time specified and if not so removed may be resold by the Vendors.
8. The Purchaser shall be answerable for all damages occasioned by any injury or other lots, by the removal of lots purchased by them, or to the premises and to repair or pay damages to the owners of same before the removal of their lots from the premises. In the event of any persons interested in the premises, claiming the whole or any part of a lot before its removal there from or if in the Auctioneer's opinion, the removal of any lot will endanger or permanently damage any building, the Auctioneer may, by written notice to the purchaser of such lot delivered to him or his Agent, or sent by post to his abode or place of business last known to the Auctioneers, rescind the sale of any such lot. The purchaser shall then be repaid his purchase money but shall not have or make any other claim.
9. Such lot or lots as are not cleared away agreeably to the condition of this sale, will not only be forfeited and may be dealt with under last condition, but the purchaser shall pay every expense attending the removal of any such lot or lots, and the costs of making good any damage occasioned by such removal. No lots shall be removed until the day following the last day of sale.
10. If any dispute or difference arises about any lot, or any other subject, the same shall be settled by the Auctioneers, with the approval of the Vendors, whose determination shall be final and binding on all parties concerned.
11. The Auctioneers nor the Vendors do not accept any liability for personal injuries of any description sustained or caused by any reason whatsoever by any person while on the premises or otherwise.
12. Purchasers will pay 15% Auctioneers Commission (minimum fee £1) + VAT on the commission.



Ballymoney

Fine Furnishings, Paintings & More

Thursday 16th September @ 6.30pm



An interesting collection of fine furniture, quality paintings including eight works by Charles Mc Auley and other works by Maurice Wilks, Tom Mc Goldrick, Markey Robinson, Dennis Thornton, WJ Watson, Sam McLarnon, Kenneth Webb, Noel Shaw etc., Wall, Mantle and Longcase clocks inc. two by master cabinet maker N D Warnock Clough, collectibles inc. Waterford and other Crystal, Royal Worcester, Moorcroft, Porcelain and other figurines, Silver, Jewellery etc., Barometers inc a very fine stick barometer, Oil Lamps, Pieces of Taxidermy etc.

The entire catalogue is available to view on [easyliveauctions](https://www.easyliveauctions.com)

<https://www.easyliveauction.com/mcafeeauctions/>

A virtual tour and a short video is also available to view on www.mcafeeauctions.com

Viewing by appointment: Tuesday 14th September
11.00 - 1.00, 2.00 - 5.00 and 6.30 - 8.00pm. and Wednesday 15th 2.00 - 4.30pm.

easyliveAuction.com



Telephone Number During Viewing & Sale
(028) 2076 9404 / 07860474956



- 1 A Very Nice Losolware 'Keswick' Footed Bowl
- 2 A Royal Albert Lady Carlyle Teaset
- 3 A Victorian Mahogany Side Table, Ornate Pedestal
- 4 A Gilt Framed Oval Bevelled Glass Wall Mirror
- 5 A Mahogany Framed Banjo Style Barometer
- 6 A Nice Pair of Victorian Framed Pictures
- 7 A Crystal Fruit Bowl and a Crystal Decanter
- 8 Two Nice Crystal Decanters
- 9 A Taxidermy of a Fox Cub
- 10 A Nice Sized Mahogany Three Door Breakfront Mirror Backed Sideboard
- 11 A Nice Pair of Pottery Based Table Lamp Bases
- 12 A Watercolour 'Near Comber, Co.Down' - Hazel Jones
- 13 A Watercolour 'Ballycopeland Windmill, Millisle' - Hazel Jones
- 14 A Mahogany Framed Single Chair
- 15 A Very Nicely Carved Camphorwood Chest
- 16 A Mahogany Framed Bracket Clock
- 17 A Watercolour 'Father of the Bride' - Bobbie Anderson
- 18 An Oil Painting 'Milking Time' - Roy Wallace
- 19 A Nice Set of Three Gilt Framed Egyptian Panels
- 20 A Large Oak Cased Bracket Clock
- 21 A Nice Mahogany and Brass Revolving Cakestand
- 22 An Early Brass Fire Inset
- 23 A Small Walnut Chest of Three Drawers
- 24 A Helmet Shaped Coal Scuttle
- 25 A Large Royal Albert Old Country Rose Tea, Dinner and Coffee Set
- 26 A Circular Mahogany Occasional Table
- 27 A Large Burleighware 'Sandon' Tea and Dinner Set
- 28 A Limited Edition Print 'Winterscene' - Tom Carr
- 29 A Large Oil Painting 'Shady Spot' - Tom McGoldrick
- 30 A Very Nice Victorian Mahogany Extending Dining Room Table, Two Leaves
- 31 A Very Good Set of 10 Mahogany Framed Balloon Back Dining Room Chairs
- 32 An Oak Cased Mantle Clock, Brass and Silvered Dial
- 33 A Large Early Royal Crown Derby Cigar Patter Dish
- 34 A Very Rare Barr, Flight, Barr Worcester Dish Decorated with Shells, 1807 - 1813
- 35 A Very Nice Edwardian Table Top Display Cabinet, Gilted Mounts
- 36 A Set of Six Silver Plated Fish Knives and a Cased Set of Pastry Forks
- 37 A Victorian Footstool with Cabriole Legs
- 38 An Unusual Mahogany Framed Chair, Inlaid Back
- 39 A Cut Glass Ships Decanter
- 40 A Very Nice Inlaid Mahogany Small Desk, Two Drawers, Leather Inset
- 41 An Unusual Large Mahogany Framed Mantle Clock
- 42 A Carved Nest of Three Tables
- 43 A Nice Pair of Gilt Framed Decorated Ceramic Panels
- 44 A Nice Victorian Oak Framed Barometer
- 45 A Good Mahogany Bureau Chest, Fitted Interior
- 46 A Pair of Victorian Staffordshire Dogs
- 47 An Unusual Ceramic Hen on Nest
- 48 A Small Mahogany Dressing Mirror on Stand
- 49 An Early Pair of Two Handled Decorated Vases
- 50 An Oil Painting 'Glenshesk From Ooragh' - Charles McAuley
- 51 An Oil Painting 'The Salmon Hut, Cushendall' - Charles McAuley
- 52 An Oil Painting 'Seeing Them off' - Markey Robinson
- 53 A Large Oil Painting 'Tranquil Stroll Near Newcastle' - Alan Bears
- 54 An Oil Painting 'On Marble Strand, Co.Donegal' - Maurice C. Wilks
- 55 A Watercolour 'Boating Near Fairhead' - Sam McLarnon
- 56 A Nice Crystal Decanter and Circular Crystal Fruit Bowl
- 57 A Victorian Imari Plate
- 58 A Nice Mahogany Square Top Occasional Table
- 59 A Waterford Crystal Fruit Bowl



1



3



5



8



9



10



15



18



21



22



29



30



31



33



35



42



44



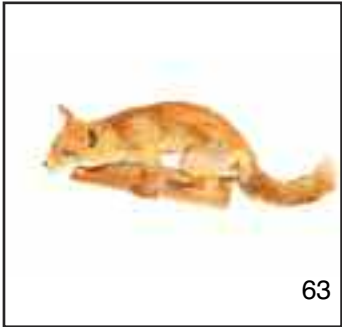
50



52



53



63



64



70



75

- 60 A Nice Edwardian Inlaid Mahogany Sutherland Table
- 61 A Bevelled Glass Sectional Wall Mirror
- 62 A Good Lot of Silver Plated Cake Baskets
- 63 A Taxidermy of a Fox
- 64 A Victorian Mahogany Chest of Four Drawers
- 65 A Mahogany Framed Upholstered Stool
- 66 A Pair of Mahogany Framed Bedside Cabinets / Lamp Tables
- 67 A Nice Pair of Oriental Figurines
- 68 A Hand Painted Old Courtware Jug
- 69 An Oil Painting 'Feeding Time' - Donal McNaughton
- 70 A Watercolour 'Minstrals Gallery, Hawks Head' - Maurice C. Wilks
- 71 An Oil Painting 'Castlerock, Golf Club' - McHale
- 72 A Watercolour 'Lacker Bridge, Donegal' - F Shepherd
- 73 A Watercolour 'Fairhead' - Jack Wilkinson
- 74 A Watercolour 'Seaside Living' - S Forth
- 75 An Oil Painting 'Girl on Beach' - Charles McAuley
- 76 A Very Nice Pair of Inlaid Mahogany Framed Armchairs
- 77 A Very Nice Old Bear
- 78 A Lot of Three Lidded Trinket Boxes
- 79 A Cabinet Cup and Saucer, Coronation Ware etc
- 80 An Unusual Edwardian Mahogany Display Table
- 81 A Very Good Copper Log / Coal Bucket
- 82 A Set of Six Crystal Wine Glasses
- 83 A Waterford Crystal Decanter and a Crystal Fruit Bowl
- 84 An Edwardian Mahogany Five Drawer Fall Front Music Cabinet
- 85 An Oil Painting 'The Salmon Netters' - Charles McAuley
- 86 A Nice Victorian Upholstered Window Seat
- 87 A Very Good Brass Standard Lamp and Shade
- 88 Two Royal Doulton Figurines 'Hannah' and 'Diana'
- 89 Two Early Royal Doulton Figurines 'The Bridesmaid' and 'Chloe'
- 90 A Nice Edwardian Inlaid Rosewood Trinagular Drop Leaf Occasional Table
- 91 An Early Royal Doulton Figurine 'The Gossips'
- 92 An Edwardian Mahogany Occasional Table, Centre Pedesdal
- 93 A Moorcroft Table Lamp Base
- 94 A Nice Nest of Three Tables
- 95 A Royal Doulton Figurine 'Lady at Well'
- 96 A Circular Crystal Fruit Bowl
- 97 A Mahogany Four Drawer Bachelors Chest, with Dressing Slide
- 98 An Oil Painting 'Landscape'
- 99 An Oil Painting 'Whitepark' - Sam McLarnon
- 100 An Very Fine Mahogany Longcase Clock, Thomas Henderson of Hull, Brass Dial, Carved Panels
- 101 A Very Nice Pair of Two Handled Vases
- 102 A Very Fine Oak Cased Stick Barometer
- 103 A Very Nice Rise and Fall Centre Light Fitting
- 104 A Nice Brass Hanging Oil Lamp
- 105 An Oil Painting 'Awaiting Their Return' - Markey Robinson
- 106 A Watercolour 'Donegal Lake' - Maurice C. Wilks
- 107 An Oil Painting 'North Antrim Coast' - R Cochrane
- 108 An Oil Painting 'Silver Birches' - K C. McKeown
- 109 A Watercolour 'Lough Inagh, Connemara' - G W Morrison
- 110 An Oil Painting 'Harbour Scene' - Fran Fitt
- 111 An Edwardian Inlaid Mahogany Oval Wall Mirror
- 112 An Edwardian Mahogany Fall Front Coal Scuttle
- 113 A Lot of Three Continental Porcelain Figurines
- 114 A Nice Walnut Rise and Fall Circular Stool
- 115 An Inlaid Mahogany Small Kneehole Desk, Leather Inset
- 116 A Lot of Three Royal Worcester Hand Painted Plates
- 117 A Very Nice Pair of Oil Paintings 'Sheep and Cattle Grazing' - Liam Reilly
- 118 A Royal Albert Old 'English Rose' Large Teaset and Other Pieces



95



97



99



100



101



105



107



112



115



116



118



119



120



125



126



130



136



137



146



147



150



151



158



160

- 119 A Nice Shaped Front Mahogany Chest of Three Drawers
- 120 A Large Oil Painting 'Tying her Laces' - Tanya Smith
- 121 A Georgian Mahogany Turn Over Leaf Tea Table
- 122 A Brass Pillar Oil Lamp Pink Bowl and Matching Shade
- 123 A Watercolour 'Seaside Cottage' - G L Hughes
- 124 A Watercolour 'Fishing Boat' - G L Hughes
- 125 A Very Nice William IV Rosewood Turn Over Leaf Tea Table
- 126 A Grays Pottery Hand Pained Drinks Set
- 127 A Snaffles Style Print 'Hunting Scene'
- 128 A Nice Black and White Etched Print 'Under the Arch'
- 129 An Oil Painting 'Amber Evening' - Mark McMeekin
- 130 A Very Nice Three Piece Upholstered Berger Suite
- 131 A Circular Mahogany Occasional Table, Centre Pedestal
- 132 Two Royal Doulton Figurines 'The Rag Doll' and 'Monica'
- 133 A Royal Doulton Figurine 'Mary Mary' and a Worcester Figurine
- 134 An Unusual Art Deco Standard Lamp and Shade
- 135 A Waterford Crystal Picture Frame
- 136 A Set of Six Waterford Crystal Stemmed Glasses
- 137 A Very Nice Strawberry and Cream Set
- 138 A Slimline Mahogany Coffee Table
- 139 Two Blackthorn Walking Sticks
- 140 A Gilted Two Branch Wall Light and Shades
- 141 A Corinthian Pillar Oil Lamp, Clear Glass Bowl and Etched Ruby Shade
- 142 A Crystal Lidded Bowl and Two Circular Fruit Bowls
- 143 A Watercolour 'Portnablugh Harbour' - Aylmer Armstrong
- 144 A Watercolour 'Portstewart Strand' - Aylmer Armstrong
- 145 A Watercolour 'Out for a Stroll' - Paul Holmes
- 146 An Oil Painting 'Riverscene' - Dennis Orme Shaw
- 147 A Very Nice Shaped Front Mahogany Chest of Four Drawers
- 148 A Victoria Mahogany Slimline Shelved Unit
- 149 A Very Nice Large Aynsley Teaset
- 150 A Very Nice Mahogany Chest of Five Drawers, Bracket Feet
- 151 An Early Watercolour 'Glenco Village' - Sam McLarnon
- 152 An Oil Painting 'Glenhead, Rossbeg' - David Overend
- 153 A Watercolour 'The Turf Gatherer' - Kenneth Webb
- 154 A Good Collection of Silver Plated Presentation Trophies
- 155 An Oil Painting 'North Antrim Coast' - John Graham
- 156 A Nice Brass Based Table Lamp and Shade
- 157 Four Nice Pieces of Tyrone Crystal
- 158 An Inlaid Mahogany Tub Chair
- 159 A Nice Figurine Based Table Lamp and Shade
- 160 A Very Nice Oak Two Drawer Hall / Side Table
- 161 A Nice Shelley Teaset
- 162 An Edwardian Inlaid Mahogany Occasional Table
- 163 An Early Old Brass Gun Sight
- 164 A Very Good Collection of Royal Albert 'Old Country Rose'
- 165 A Nice Shaped Side Mahogany Coffee Table
- 166 A Nice Collection of Crystal
- 167 A Set of Eight Waterford Crystal Wine Glasses
- 168 A Set of Eight Tall Waterford Crystal Wine Glasses
- 169 A Nice Collection of Paperweights
- 170 An Oil Painting 'Torr Head From Ardclinis' Charles McAuley
- 171 An Oil Painting 'The Mournes' - Charles McAuley
- 172 A Watercolour 'Ballintoy' - Aylmer Armstrong
- 173 An Oil Painting 'Giants Causeway' - Hamilton Sloan
- 174 A Watercolour 'Culdaff' - Aylmer Armstrong
- 175 An Oil Painting 'Dunluce Castle' - Hamilton Sloan
- 176 A Carved Oak Hall Chair



163



170



171



174



175



184



186



190



200



201



202



205



210



215



217



218



219



234



235



240



243



251



253



254

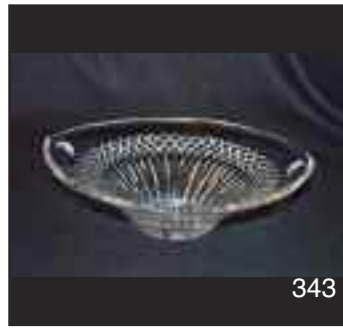
- 177 An Etched Glass Centre Light Fitting
- 178 A Good Old Tilley Lamp
- 179 A Set of Four Spanish Pottery Figurines 'Musicians'
- 180 A Nice Victorian Mahogany Hall Table
- 181 A Bowler Hat and a Gents Dress Hat
- 182 A Mahogany Sewing Box and Contents
- 183 An Oil Painting 'At the Christmas Tree' - Michelle
- 184 An Oil Painting 'Thatched Cottage' - R Cochrane
- 185 An Oil Painting 'In the Shade' - T. Crosby
- 186 A Watercolour 'Winterscene' - Olive Davidson
- 187 A Nice Lot of Linen
- 188 A Pair of Good Table Lamp Shades
- 189 A Gilt Framed Bevelled Glass Wall Mirror
- 190 A Nice Circular Mahogany Wall Mirror
- 191 A Victorian Mahogany Towel Rail
- 192 A Mahogany Framed Dressing Mirror On Stand
- 193 An Edwardian Inlaid Mahogany Oval Table
- 194 A Nice China Teaset
- 195 A Hanging Brass Oil Lamp, Another Base and a Burner
- 196 A Nice Mahogany Panel Door Bedside Cabinet
- 197 A Lot of Table Cloths and Other Linen
- 198 A Very Good Collection of Royal Albert 'Old Country Rose' Pieces
- 199 A Crystal Table Lamp and Shade
- 200 An Oil Painting 'Cattle Grazing at Glendun' - Charles McAuley
- 201 An Oil Painting 'Out Fishing' - Charles McAuley
- 202 Three Pieces of Marquerite Chintz Ware
- 203 A Very Nicely Decorated Occasional Table
- 204 A Sundry Lot of Ceramics
- 205 A Very Nice Victorian Rosewood Upholstered Armchair
- 206 Two Royal Worcester Figurines 'Noddy' and 'Mr Plod'
- 207 A Royal Doulton Figurine 'Pluto' and a Noddy Figurine 'Big Ears'
- 208 A Royal Albert Figurine 'Mrs Rabbit' and a Noddy Figurine 'Tessy Bear'
- 209 A Taxidermy of a Pheasant
- 210 A Very Fine Walnut Pembroke Table
- 211 A Royal Worcester Dish, Hand Painted with Flowers
- 212 A Set of Three Clarice Cliff Small Plates
- 213 A Clarice Cliff Dessert Dish
- 214 A Nice Pair of Continental Figurines 'Lady and Gent'
- 215 A Moorcroft Dish with Paper Label
- 216 A Moorcroft Bowl
- 217 A Moorcroft Vase
- 218 A Moorcroft Dish
- 219 A Rare Royal Doulton Figurine 'Courting'
- 220 An Early Royal Doulton Figurine 'Chloe'
- 221 An Early Royal Doulton Figurine 'Gretta' and A Royal Doulton Figurine 'Cathy'
- 222 Three Royal Doulton Figurines 'Karen' , 'Autumn Breezes' and 'Diana'
- 223 An Early Royal Doulton Figurine 'The Little Bridesmaid' and a Royal Doulton Figurine 'Valarie'
- 224 Two Royal Doulton Figurines 'Blue Bird' and 'Mary had A Little Lamb'
- 225 An Early Royal Doulton Figurine 'Lucy Ann' and a Royal Doulton Figurine 'Little Nell'
- 226 A Large Ruby Jug, Another and A Ruby Bowl
- 227 A Nice Edwardian Mahogany Framed Open Armchair
- 228 A Mahogany Framed Upholstered Stool
- 229 A Good Victorian Captains Chair
- 230 A Nice Slimline Mahogany Astragal Glazed Cabinet
- 231 A Royal Doulton Figurine 'Blythe Morning'
- 232 A Continental Porcelain Figurine 'The Letter'
- 233 A Pair of Crystal Candlesticks and Two Small Vases
- 234 A Very Nice Edwardian Inlaid Music Cabinet
- 235 An Unusual French Mother of Pearl Scent Caddy in the Form of an Egg
- 236 A Lot of Five Waterford Crystal Sherry Glasses
- 237 Six Nice Crystal Stemmed Glasses
- 238 Four Nice Crystal Stemmed Glasses
- 239 An Oil Painting 'Winterscene' - William Cunningham
- 240 A Watercolour 'Coleraine Old Bridge' - Sam McLarnon
- 241 An Oil Painting 'Downpatrick, Co.Down' - R B Higgins



- 242 An Oil Painting 'Near Ballynahinch' -
R B Higgins
- 243 An Oil Painting 'The Old Homestead' -
R Cochrane
- 244 A Very Nice Four Piece Silver Plated
Tea Service
- 245 A Good Useful Shelved Cabinet
- 246 A Royal Albert Figurine 'Mrs Tiggywinkle'
and a Beswick Figurine 'Benjamin Bunny'
- 247 A Good Brass Bankers Lamp
- 248 A Ships Decanter and a Lot of Tyrone and
Other Crystal
- 249 A Nice Gents Valet Stand
- 250 A Very Nice Inlaid Side / Hall Table,
Centre Drawer
- 251 A Very Fine Inlaid Mahogany Edwardian
Games Table
- 252 A Good Canteen of Kings Pattern Cutlery
- 253 An Oil Painting 'Near Dumdrum' -
Dennis Thornton
- 254 An Oil Painting 'Stepping Stones,
Tullymore' - Dennis Thornton
- 255 An Oil Painting 'Changing Sheep' -
Noel Shaw
- 256 A Watercolour 'Mountain Pass' -
Freddy Mark
- 257 A Collection of Ironstone and Other
Blue and White Ware
- 258 A Nice Mahogany Carved Bedside /
Lamp Table
- 259 A Brass Hanging Oil Lamp
- 260 A Good Mahogany Hall Chair
- 261 A Nice Leather Bound Volume 'The
Grand National', Signed by
Clive Graham and Bill Curling
- 262 A Nice Inlaid Walnut Sewing Table
- 263 A Carved Oak Wall Shelf
- 264 A Shaped Front Hall Table, Carved Back
- 265 A Very Nice Cased Music Box Together
With Extra Discs
- 266 A 1929 Grey Friars Holiday Annual and a
Bound Volume 'Burns Works'
- 267 An Inlaid Mahogany Small Chair
- 268 A Pair of Two Handled Decoraed Vases a/f
- 269 An Early Royal Doulton Figurine 'Diana'
and a Worcester Figurine 'Tommy'
- 270 A Very Nice Early Victorian Mahogany
Davenport Desk
- 271 A Watercolour 'Barronmore Gap, Donegal' -
J W Carey
- 272 An Oil Painting 'Under the Tree' - After
George Morland
- 273 A Nice Victorian Mahogany Clothes Rail
- 274 A Limited Edition Framed Print
'Cherbourg Bound' Titanic Print, signed
with Original Certificate
- 275 A Very Nice Windsor Style Wooden
Armchair
- 276 A Nice Mahogany Framed Piano Stool,
Hinged Seat
- 277 A Watercolour 'North Antrim Coastline' -
S. Forth
- 278 A Watercolour 'Mulroy Bay' -
Margaret Stockman
- 279 A Watercolour 'Slemish' - S Forth
- 280 A Very Nice Brass Based Electrified
Oil Lamp and Shade
- 281 A Very Nice Brass Hanging Centre Light
- 282 A Very Nice Cottage Hanging Centre Light
- 283 An Interesting Collection of Books
- 284 A Mahogany Nest of Three Tables
- 285 A Mahogany Cased Double Weight
Vienna Wall Clock
- 286 A Very Nice Oak Cased Longcase Triple
Weight Clock, by Master Cabinet Maker,
N.D Warnock
- 287 A Double Weight Wall Clock
- 288 A Waterford Crystal Lidded Biscuit Barrell
and a Glass Decanter
- 289 An Old School Handbell
- 290 A Good Longcase Clock, Painted Arch Dial
- 291 An Iron and Brass Set of Scales
and Weights
- 292 A Nice Shaped Front Carved Hall Table
- 293 An African Carved Chair
- 294 A Mahogany Based Standard Lamp
and Shade
- 295 A Very Nice Large Slate Mantle Clock
- 296 A Georgian Mahogany Chest of Four
Drawers with Dressing Slide
- 297 A Nice Gilt Framed Crystoleum
- 298 A Gilt Framed Crystoleum
- 299 An Oil Painting 'Robin' - E Jones
- 300 An Oil Painting 'Stooking The Corn' -
Donal McNaughton



343



343



348



350



352



353



362



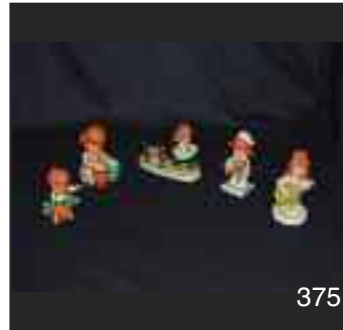
365



369



373



375



376



377



378



379



381



383



385



386



402



403



404

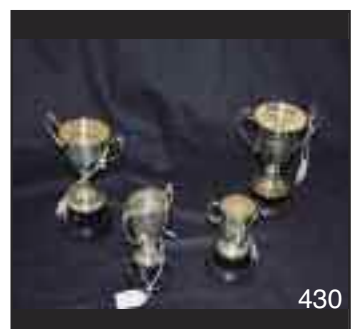
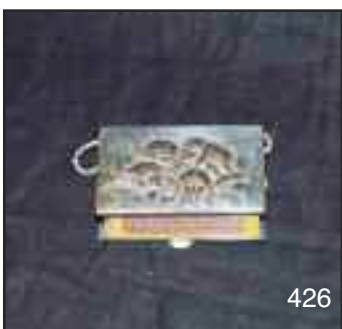
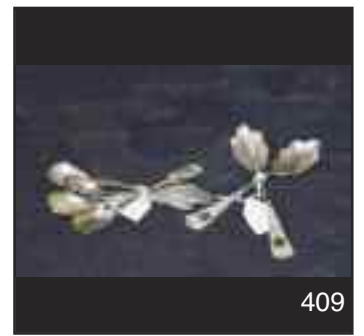


405



406

- 301 An Oil Painting 'West of Ireland' - David Gordon Hughes
- 302 A Watercolour 'Doe Castle, Donegal' - J W Carey
- 303 A Small Victorian Drop Leaf Table, Two Drawers
- 304 An Art Glass Figurine of a Clown and Another of a Rooster
- 305 A Very Nice Mahogany Framed Button Back Open Armchair
- 306 A Sundry Lot of Silver Plated Cultery Etc
- 307 A Large Quantity of Silver Plate Ware Including Entre Dish etc
- 308 A Sundry Lot of Ulster Automobile Club, Ashtray and an Easywork Cream Gun
- 309 A Nice Oak and Gilted Framed Crystoleum
- 310 A Watercolour 'Ballycastle Cottage' - John Graham
- 311 A Large Carved Antique Crocodile Figurine
- 312 A Set of Six 'Esso' Garden 'Royal Alma' Dishes
- 313 A Pair of Oil Paintings 'Lakescenes'
- 314 A Framed Hunting Print 'Breaking Cover'
- 315 A Very Nice Inlaid Mahogany Cased Drop Dial Wall Clock
- 316 A Watercolour 'Inspecting the Catch' - Bobbie Anderson
- 317 An Oil Painting 'Sisters' - Michelle
- 318 A Superb Heavily Carved Oak Barometer
- 319 A Very Nice Mahogany Cased Longcase Triple Weight Clock, By Master Cabinet Maker, N. D Warnock
- 320 An Oil Painting 'Over Valentines' 'Montys Pass Grand National Winner 2003' - W J Watson
- 321 An Oil Painting 'Evening Light, Movangaher' - Tom McGoldrick
- 322 An Oil Painting 'Distinguished Gent' - Frank McKelvey
- 323 An Oil Painting 'Still Life' - Ann Michael
- 324 A Watercolour 'Murlough Bay' - G W Morrison
- 325 A Very Good Set of Four Gilt Framed Hunting Prints - After E.A.S Douglas
- 326 A Watercolour 'I'm Lost' - Lylla Tully
- 327 A Mahogany Writing Bureau
- 328 A Large Oil Painting 'Donegal' Signed - Theo Gracey
- 329 A Large Watercolour 'Hills and Lakes, Co. Donegal' - R B Higgins
- 330 A Mahogany Cased Double Weight Vienna Wall Clock
- 331 A Nice Circular Convex Wall Mirror, Eagle Surmount
- 332 An Oil Painting 'Ploughing' - W J Watson
- 333 A Very Nice Painted Horse Head Study - W J Watson
- 334 A Very Nice Painted Horse Head Study - W J Watson
- 335 A Nice Gilt Framed Oil Painting 'Waterfowl'
- 336 A Collection of Aynsley Orchard Gold
- 337 A Collection of Aynsley Orchard Gold
- 338 A Collection of Aynsley Orchard Gold
- 339 A Minature Satinwood Chest of Four Drawers
- 340 A Very Fine Large Copper Log Bin
- 341 A Nice Edwardian Fall Front Coal Scuttle
- 342 A Nice Shaped Side Inlaid Mahogany Coffee Table
- 343 A Nice Gilted Figurine Topped Mantle Clock
- 344 A Nice Waterford Crystal Fruit Bowl
- 345 A Very Nice Sized Four Door Breakfront Display Cabinet
- 346 A Rare Early Royal Doulton Figurine 'Midsummer Noon' 1939 - 1949
- 347 A Royal Worcester Hand Painted Lidded Pot Pourri
- 348 A Royal Worcester Hand Painted Lidded Vase
- 349 A Rare Pair of Early Derby Dishes, Circa 1820
- 350 A Very Nice Pair of Large Bronze Stags
- 351 A Good Selection of Crystal Glass
- 352 A Collection of Waterford and Other Sundae Dishes
- 353 A Lot of Waterford and Other Wine Glasses
- 354 An Edwardian Mahogany Shaped Front Turn Over Leaf Card Table
- 355 A Very Nice Oval Inlaid Walnut Centre Table
- 356 A Waterford Crystal Jug, A Waterford Crystal Vase and Two Small Waterford Pieces
- 357 A Lot of Four Waterford Crystal Wine Glasses
- 358 A Lot of Four Waterford Crystal Wine Glasses and Three Other Glasses



- 359 A Waterford Crystal Comport, a Waterford Crystal Candleholder and a Waterford Crystal Jug
- 360 An Oil Painting 'Summer' - Elizabeth Brophy
- 361 A Nice Gilt Framed Picture 'The Farmyard Meet' - After Herring
- 362 An Oil Painting 'Taking It Easy' - G Wright
- 363 An Oil Painting 'Inspection the Ploughing' - G Wright a/f
- 364 A Mahogany Fall Front Coal Scuttle
- 365 A Very Nice Upholstered Easy Chair
- 366 A Waterford Crystal Fruit Bowl
- 367 A Very Nice Pair of Heavy Carved Elephants
- 368 A Very Fine Mahogany Towel Rail
- 369 A Sutherland Mahogany Ormolo Lamp Table on Centre Pedestal
- 370 A Very Nice Gilt Based Table Lamp and Shade
- 371 A Watercolour 'Owls' - Chris Stevens
- 372 A Heritage Figurine 'Dogs'
- 373 A Very Nice Set of 12 Geobel Cherub Figurines, January - December
- 374 An Unusual Set of Five Geobel Figurines
- 375 An Unusual Set of Five Geobel Figurines
- 376 An Inlaid Mahogany Mirror Backed Display Cabinet
- 377 A Very Nice Mahogany Upholstered Open Armchair
- 378 An Very Nice Oil Painting 'Gathering Blackberries' - Caroline Patterson
- 379 A Very Nice Gilt Framed Pictures 'Horses' - G Wright
- 380 A Watercolour 'Sea and Landscape' - George Trevor
- 381 An Oil Painting 'Grazing' - P O'Brien
- 382 An Oil Painting 'Open Road, Glenshesk' - P O'Brien
- 383 An Oil Painting 'Glide On' - H Harris
- 384 An Oil Painting 'Near Dunleany, Co. Donegal'
- 385 A Watercolour 'The Barn Owls' - Chris Stevens
- 386 A Very Good Silver Plated and Crystal Five Branch Centre Piece
- 387 A Very Nice Hand Painted 'Hackney Millenium Plate', Warwick Charm-W J Watson
- 388 A Spode Bowl and a Collection of Blue and White Ware
- 389 An Oil Painting 'Feeding Time' - After Marie Carroll
- 390 An Oil Painting 'Lonely Farmhouse' - After Marie Carroll
- 391 An Oil Painting 'Rose Cottage' - Tom McGoldrick
- 392 A Small Walnut Chest of Drawers, Drop Sides
- 393 An Oil Painting 'Bit of a Session' - Darren Paul
- 394 A Pair of Nice Vintage Glass Light Shades
- 395 A Nice Pair of Vinrage Glass Light Shades
- 396 A Nice Pair of Ruby Glass Light Shades
- 397 A Tantalus with Three Cut Glass Decanters
- 398 A Watercolour 'Gathering Dulce' - Bobbie Anderson
- 399 A Tyrone Crystal Lidded Glass Bowl
- 400 A Pair of Silver Tongs, London 1800, Peter, Ann and William Bateman
- 401 A Good Pair of Heavy Silver Serving Spoons, London 1834. William Bateman
- 402 A Bright Cut Silver Serving Spoon, Dublin 1802
- 403 A Silver Sauce Ladle, Dublin 1876
- 404 A Pair of Small Silver Candlesticks, Birmingham 1926
- 405 A Silver Coffee Pot, Birmingham 1909
- 406 A Small Silver Footed Bowl, Sheffield 1935
- 407 A Nice Small Silver Pin Tray, Birmingham 1897
- 408 A Three Piece Silver Backed Brush Set, London 1934
- 409 An Assorted Lot of Silver Plated Cutlery
- 410 An Unusual Silver Dish with Detachable Stand, Chester 1908
- 411 A Nice Silver Bowl, Birmingham 1923
- 412 A Star Cut Tablespoon, 1830
- 413 A Very Nice Silver and Glass Perfume Bottle, Birmingham 1913
- 414 A Silver Table Lighter, Sheffield 1903
- 415 A Nice Tall Embossed Silver Vase, London 1893
- 416 A Silver Inkwell, Chester 1916



431



432



433



434



436



432



437



438



439



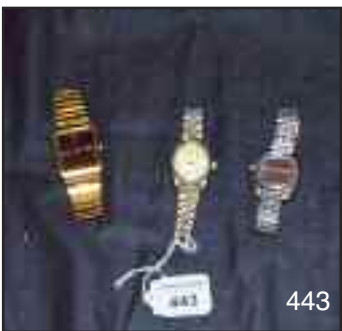
440



441



442



443



444



445



446



447



448



449



450



451



452



453



454

- 417 A Very Nice Tortoiseshell and Silver Topped Glass Box, Birmingham 1921, Maker Mappin and Webb
- 418 A Silver Embossed Bowl
- 419 A Silver Compact, Birmingham 1938
- 420 A Very Nice Sized Silver Salver, Sheffield 1909
- 421 An Oval Silver Photograph Frame, Birmingham 1919, Deakin and Franis
- 422 A Rectangular Silver Photograph Frame, Birmingham 1942, Charles Green & Co.
- 423 An Embossed Photograph Frame, Sheffield 1990
- 424 A Large Silver Photograph Frame, London 1994
- 425 A Silver Candleabra, Birmingham 1959
- 426 A Silver Plated Cherub Matchbox Holder
- 427 A Small Silver Footed Box, Birmingham 1916
- 428 A Silver Plated Fruit Knife, A Small Silver Case, Birmingham 1915 and a Small Perfume Bottle
- 429 A Pair of Silver Handled Glove Stretchers, a Silver Handled Button Hook and a Silver Mounted Nail Buffer, Birmingham 1912
- 430 A Lot of Four Silver Presentation Cups, Various Dates
- 431 A Lot of Three Silver Presentation Cups, Various Dates
- 432 An Interesting Box of Assorted Cutlery and an Unusual Set of Pickle Forks
- 433 A Pair of Silver Plated Vases and a Silver Plated Presentation Cup
- 434 A Lot of Assorted Cutlery
- 435 An Unusual Lot of Silver Plated Spoons
- 436 A 9ct Gold and Amber Cheroot Holder in its Fitted Case, Birmingham 1915
- 437 Two Carved Needle Cases and a Folding Button Hook Case
- 438 A Silver Gents Pocket Watch, London 1909
- 439 A Gold Plated Pocket Watch
- 440 A Gold Gents Pocket Watch
- 441 Two Old Gents Pocket Watches
- 442 A Seiko Gents Wrist Eatch and Two Others
- 443 An Accurist Gents Wrist Watch and Two Others
- 444 An Oneida Gents Wrist Watch and Two Others
- 445 A Lot of Four Ladies Wrist Watches
- 446 A Ladies and a Gents Wrist Watch
- 447 A 1740's Coin
- 448 A 1902 Crown
- 449 A Box of Mainly Old Silver 3 Pence Pieces
- 450 A Box of English and Irish Half Crowns
- 451 A Lot of Half Crowns, 3'ds, Pennies and Notes
- 452 Nine Commemorative Crowns and Britains First Decimal Coin Set
- 453 An Assorted Box of Coins etc
- 454 A 9ct Gold Diamond Set Heart and Chain, Chester 1903
- 455 An Early Silver and Amethyst Bookmark, Birmingham 1912
- 456 A 9ct Gold Sapphire and Diamond Ring
- 457 A Gold Gents Ring
- 458 A Coral Double String Bead Neckace, Silver Clasp
- 459 A 9ct Gold on Silver Cameo Ring
- 460 A 9ct Diamond Ring, Diamonds 0.25ct
- 461 A Superb 18ct Gold Princess Cut Diamond Ring, Diamonds 0.50ct
- 462 An 18ct Gold and Platinum Five Stone Diamond Ring
- 463 An 18ct Gold Ruby and Diamond Ring
- 464 An 18ct Gold Sapphire and Diamond Ring
- 465 A 9ct Gold Dress Ring
- 466 An Antique Citrine Pendant and Chain
- 467 A 9ct Gold Gents Ring
- 468 Two Gold Dress Rings a/f
- 469 A Superb 14ct Gold Emerald and Diamond Pendant on a 14ct Gold Chain
- 470 A Pair of Gold Plated Cufllinks, a Chain and a Gate Bracelet in a Small Jewellery Box



455



456



457



458



459



460



461



462



463



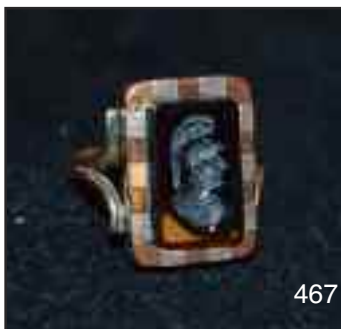
464



465



466



467



469



470

mcafee



51 Main Street, Ballymoney, BT53 6AN, Tel: (028) 2766 7669