



mcafee

**Quality Furnishings and
Decorative Accessories**

Thursday 11th February @ 6.30pm





Important Sale by Auction of Fine Furnishings and Decorative Accessories



Thursday 11th February @ 6.30pm

An exceptional collection of fine furnishings, and a selection of high quality decorative accessories, from leading furnishings companies like Maitland Smith, Theodore Alexander, Arte di Mexico etc.

Virtual tour available to view on mcafeeauctions.com

View entire catalogue on www.easyliveauctions.com where you may also view the sale and bid live on the evening of the sale.

**** Delivery of purchases via courier – no private collections.**

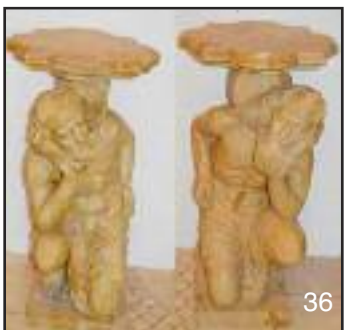
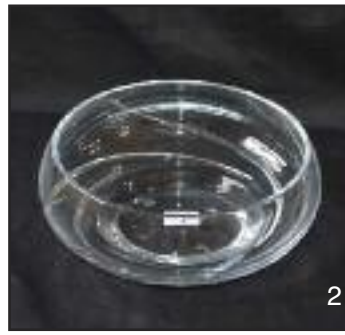
easyliveAuction.com



Telephone Number During Viewing & Sale
(028) 2766 7669 / 07860474956



1	A Good Set of Six Waterford 'John Rocha' Wine Glasses, 10" Tall	24	A Large Circular 'London' Wall Clock, 23" Diameter
2	A 'Louise Kennedy' Circular Fruit Bowl, 9 1/2" Diameter	25	A Glass Vase and Arrangement and a Decorated Jug
3	A Set of Six Tall Wine Glasses, 9 1/2" Tall	26	Two Pairs of Very Good Curtains, 89" Drop and a Matched Pair, 52" Drop and Their Matching Wooden Poles and Tiebacks
4	A Tyrone Crystal Fruit Bowl 9 1/2" Diameter		
4a	A Good Lot of 12 Crystals Wine Glasses, 7 1/2" Tall	27	A Very Impressive 'Maitland Smith' Giraffe 6 Branch Chandelier
5	Six Tyrone Crystal Tumblers, 6" Tall and Two Matching Wine Glasses, 8 1/2" Tall	28	A Nice Sized Two Door Side Cabinet, Drawers Above, 40" W x 35" Tall
6	A Hand Carved Wooden Figurine of a Goat	29	An Ornamental Vase on Metal Stand, 13 1/2" Tall
7	A Hand Carved Wooden Figurine of a Cow	30	A Signed 'Kill Bill' Poster and Certificate
8	A Hand Carved Wooden Figurine of a Bear and a Hand Carved Wood Figurine of an Otter	31	Two Pairs of Very Nice Curtains, 100" Drop and Their Curtain Poles and Tiebacks and a Another Curtain and Pole, 130" Drop
9	A Metal Five Branch Candleholder and Two Ornamental Ducks	32	A Two Handled Flagon and Its Contents
9a	A Lot of Crystal Candleholders etc		
10	Two Pottery Two Handled Flagons and Their Contents	33	A Maitland Smith Pair of Bronzed 'Monkey' Table Lamps and Shades, 39" Tall
11	A Scale Model of a Fishing Boat, 18" Long	34	A Large Gilt Framed Bevelled Glass Wall Mirror, 68" x 56"
12	A Large Circular Ornamental Plaque and Its Metal Stand, 19 1/2" Diameter	35	A Very Nice Breakfront Side Table, Heavily Carved Legs and Green Marble Top, 38" Long
13	Two Waterford Crystal Carafes, 9 1/2" and 11" Tall	36	A Very Fine Pair of Marble 'Atlas' Figurine Planters, 39" Tall
14	A Waterford Crystal Footed Bowl, 7 1/2" Diameter and Another Crystal Bowl, 5" Diameter	37	A Nice Pair of Two Handled Decorated and Mirrored Vases, 22" Tall
15	Eight Waterford Crystal 'John Rocha' Wine Glasses, 9" Tall	38	A Dome Lift Top Chest, 18" Tall
16	A Denby Tea and Dinner Service	39	A Dome Lift Top Chest, 15" Tall
17	A Set of Three Pottery Wall Plaques, 13" Tall	40	A Very Nice Circular Decorated Occasional Table, Brass Inlay and Marble Top, 42" Diameter
18	A Set of Six Hanging Pottery Vessels		
19	Two Willow Tree Figurines 'Joy and Promise'	41	A Tall Glass Vase and Contents
20	A Rectangular Kitchen Table and Six Leather Dining Chairs	42	A Very Fine Pair of Gilted and Decorated Marble Top Plinths, 54" Tall
21	A Nice Set of Three Leather Covered Metal Framed Bar Stools	43	A Magnificent Pair of Bronze Elephant' Figurine Planters and Contents, 25" Tall
22	A Viners 'Parish Collection' Canteen of Cutlery		
23	A Whirlpool American Two Door Fridge Freezer	44	An Upholstered Long Cushion



- | | | | |
|----|--|----|---|
| 45 | A Very Nice Maitland Smith Goat Hair Two Seater Settee, Sphinx Figurine Front Legs | 66 | A Nice Modern Desk Lamp |
| 46 | Two Pairs of Very Nice Curtains, Their Pelmet and Tiebacks, 100" Drop | 67 | A Good Swivel Mahogany Desk Chair |
| 47 | A Large Bronzed Achilles Shield, 49" Diameter | 68 | A Lot of Six Cushions |
| 48 | A Set of Three Handcrafted Black Metal Candle Holders | 69 | A Good Eight Branch 'Lustre' Centre Light |
| 49 | A Lot of Two Pottery Decorated Vases | 70 | A Very Good Set of Curtains, and their Pole, 91" Drop |
| 50 | A Skywatcher Telescope on Stand | 71 | A Bronze Figurine of Wyatt Earp, 33" Tall |
| 51 | A Metal Framed Table Lamp and Shade, 51" Tall | 72 | A Very Unusual Dark Wood and Gilted Harp Floor Lamp, 59" Tall |
| 52 | A Nice Decorated Square Top Lamp Table, 26" Tall | 73 | A Large Framed Gladiator Poster, Sword and Cover, 56" x 41" |
| 53 | A Very Nice Figurine of a Knight, 48" Tall | 74 | A Framed Print 'California Road Trip' |
| 54 | A Framed 'Kill Bill Poster and a Samurai Sword, 39" x 51" | 75 | A Very Good Mahogany Kingsize Sleigh Bed, Its Covers and Cushions |
| 55 | An American Moon Walker Historic Autograph Collection signed by Neill Armstrong, Buzz Charles Conrad, Alan Bean, Alan Shephard, Edgar Mitchell, Jim Irwin, Dave Scott, John Charles Duke, Gene Cernan & Harrison Schmitt | 76 | A Very Nice Bed Pelmet and Curtains |
| 56 | A Constellation Briefcase | 77 | A Very Good Pair of Curtains, It's Pelmet and Tiebacks, 90" Drop |
| 57 | A Cream Painted Nine Piece Bedroom Suite, Including Wardrobe, Two Chests, Two Bedside Cabinets, Dressing Mirror, Dressing Table, Cheval Mirror and Stool | 78 | A Very Nice Pair of Gilted and Decorated Table Lamps and Shades |
| 58 | A Nice Pair of Table Lamps and Shades | 79 | A Very Nice Pair of Egyptian Framed Prints, 36" x 28" |
| 59 | A Lot of Two NASA Prints and a Moonwalker Framed Print | 80 | A Very Nice Mahogany Four Piece Bedroom Suite Including wardrobe, Chest and Two Bedside Lockers |
| 60 | A Very Good Double Bed and Headboards, Covers and Cushions | 81 | A Very Good Pair of Metal Based Table Lamps and Shades |
| 61 | An Oil Painting 'Leopard' After N Fox | 82 | A Very Nice Gilted and Pearl Centre Light Fittings |
| 62 | A Childs Rocking Horse | 83 | A 16 Bay Storage Unit with Matching Storage Baskets |
| 63 | An Indian Woven 'Plush' Rectangular Rug, 70" x 50" | 84 | Two Circular Hat Boxes and a Floral Arrangement |
| 64 | Two Foldable Ottoman Boxes | 85 | A Large Framed Egyptian 'Papyrus', 68" x 35" |
| 65 | A Nice Pair of Washed Oak Bookcases and a Matching Bureau | 86 | A Scaled Model of the HMS Victoria 1805 Tall Ship, 36" Long x 32" Tall |
| | | 87 | A Cream Painted Slimline Bathroom Cabinet |
| | | 88 | Two Good Lampshades |
| | | 89 | A Decorated Sword and Two Black Prince Swords |
| | | 90 | Two 'Lord of the Rings' Swords |



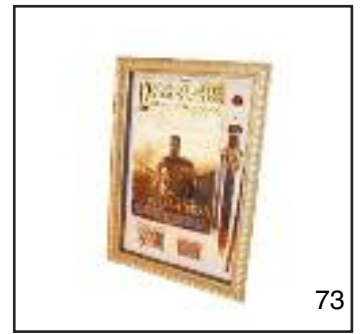
65



71



72



73



75



77



78



80



81



82



83



85



86



89



90



93



98



99



105



111



115



117

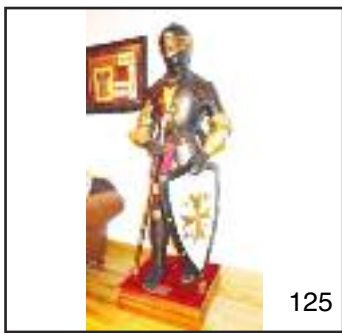


120

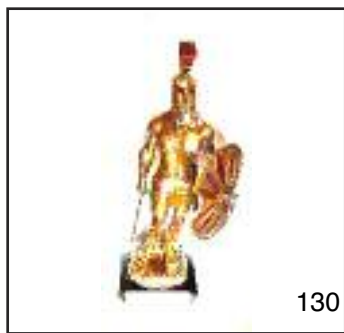


124

- 91 A 'Lord of the Rings' Sword
- 92 A 'Lord of the Rings' Sword
- 93 A 'Lord of the Rings' Sword
- 94 A 'Lord of the Rings' Sword
- 95 Two 'Lord of the Rings' Swords and Another Sword
- 96 A Log Basket and Contents
- 97 A Lot of Two Good Cushions
- 98 A Very Nice Maitland Smith 'Monkey on Globe' Lamp with Tortoise Shell Style Shade
- 99 A Very Fine Pair of 'Maitland Smith' Gilted and Decorated Pland Stands, 48" Tall
- 100 A Very Nice Theodore Alexander Walnut Extending Dining Room Table and its set of 10 Matching Chairs including Two Carvers, 130" x 48"
- 101 A Set of Three Candle Christmas Decorations
- 102 A Bonzed Genesis Figurine 'Family Group'
- 103 A Nice Three Piece Silver Plated Tea Service
- 104 A Framed Columbian Space Shuttle Thermal Tile
- 105 A Very Nice Theodore Alexander Breakfront Mahogany 4 Door Pillar Front Bookcase / Display Cabinet, 99 W x 96 Tall
- 106 A Pair of Metal Log Baskets
- 107 A Tyrone Crystal Footed Bowl
- 108 A Very Nice Metal Based Table Lamp and Shade
- 109 A Nice Gilted Metal and Glass Candle Holder
- 110 A Very Fine Pair of Arte Di Mexico Eight Candle 'Sleeper' Ceiling Lights
- 111 A Set of Three Gilted and Metal Circular Glass Top Tables
- 112 A Small Electrified Water Fountain
- 113 A Pair of Crackled Glass Candleholders and a Ceramic Deers Head
- 114 Two Crackled Glass Perfume Bottles and Two Lidded Trinket Boxes
- 115 A Very Nice Shaped Front Walnut Credenza, Marble Top and Gilted Mounts, 64" Long
- 116 A Circular Shield and a Pair of Swords
- 117 A Wooden and Metal Crossbow
- 118 A 'Lord of the Rings' Spear
- 119 A Lot of Two Matching reclining Leather Sofas and Two Matching Reclining Armchairs
- 120 A Very Fine Pair of 'Maitland Smith' 'Elephant' Bronzed Floor Lamps, 72" Tall
- 121 Two Pairs of Very Nice Curtains and Their Poles, 96" Drop
- 122 A Set of Three Pairs of Very Nice Curtains and Their Poles, 96" Drop
- 123 A Large Tyrone Crystal Footed Bowl, 11 1/2" Diameter
- 124 A Full Sized 'Marto' Suit of Armour, 86" Tall (including stand)
- 125 A Full Sized 'Acero de Toledo' Suit of Armour, 75" Tall (including Stand)
- 126 A Good Lot of Six Matching Cushions
- 127 A Very Nice Maitland Smith 'Monkey with Ball on Books', Table Lamp and Shade with Tortoise Shell Style Shade
- 128 A Nice Pair of African Framed Prints
- 129 An Oil Painting 'Sheep at the Gate' - Carol McCandless, 26" x 22" (framed up)
- 130 A Bill Toma Bronze Figurine 'Achilles Confronts Hector', 40" Tall
- 131 A Very Good Three Piece Leather Suite including a Four Seater, Two Seater and a Snuggle Settee
- 132 An Oil Painting 'Autumn Delight' - John Frances Skelton, 31 x 26 (framed up)
- 133 A Small Candle Lamp and a Coal Scuttle
- 134 A Pair of Tall Figurines, 'Ladies', 28" Tall
- 135 A Large Bronze Four Elephant Figurine Group, 50" Wide x 24" Tall



125



130



131



132



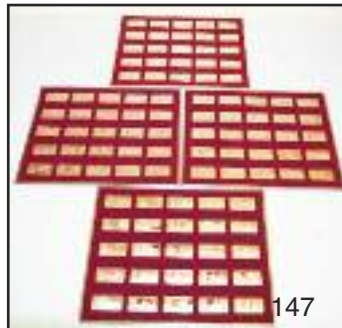
138



140



146



147



149



150



151



155



158



165



168



169



170



176



180



181



185



186



187



189

- 136 A Large Circular Metal Framed Wall Mirror, 35" Diameter
- 137 A Three Column Candle Holder, 21" Tall
- 138 A Panasonic 50" Flatscreen TV and Its Stand
- 139 A Nice Beanbag
- 140 A Large 'Elephant Mask' Bronze Mounted Leather Topped Coffee Table, 48 " x 48"
- 141 A Tufted Short Pile 'Champagne' Floor Rug, 120" x 84"
- 142 A Nice Copperised Metal 5 Branch Centre Light Fitting
- 143 A Pair of Copperised Metal Three Branch Wall Lights
- 144 A Good Lot of Seven Cushions
- 145 A Very Nice Gilted and Decorated Marble Top Side Table, 62" Wide
- 146 A Queen Elizabeth II Silver Coin, Golden Jubilee Collection in Presentation Case
- 147 A Limited Edition Cased Set of 100 'Greatest American' Figurine Ingots in Presentation Case
- 148 A Cased Set of 100 Ingots 'English Cars' in presentation Box
- 149 A Bill Toma 'Ulysses' Bronze Figurine 'Before the Walls of Troy' , 36" Tall
- 150 A Large Decorated Three Elephant Head Tall Floor Lamp and Shade, 68" Tall, Including Shade
- 151 A Very Nice Marble Topped Chess Board with Gilted Chess Figures, Under Dome
- 152 Three Pairs of Good Curtains, Their Poles and Tie Backs, 96" Drop and the Blinds
- 152a A Box of Christmas Decoration and Christmas Bags
- 152b A Large Red Table Cloth and Table Runner
- 152c A Lot of Candle Holders, Napkin Holder etc
- 153 A Floral Arrangement in Basket
- 154 A Framed Kennedy Space Centre Print
- 155 A Very Nice Sized Corner Leather Suite
- 155a A Lot of Three Nice Cushions
- 156 A Logik Small Flatscreen TV and a T.V Stand
- 157 A Wooden Studded Table
- 157a An 'Equestrian Throw'
- 158 A Childs Dolls House and Another
- 159 An Arte De Mexico Copperised Centre Light Fitting
- 160 A 12.1 Slimline Digital Picture Frame
- 161 A Framed Set of Four Disney Pictures
- 162 A Framed Limited Edition Print 'I See the Sheep are out again' - Mike Sibley
- 163 An Ornamental Tree in Pot
- 164 A Black Metal Companion Set and a Log Basket
- 165 A Leather and Goat Hair Love Seat
- 166 A Set of Six New Patio Seat Cushions
- 167 A Good Swivel Office Chair
- 168 A Very Good Leather Covered Swivel Office Chair
- 169 A Cased Set of Two Starwars Books
- 170 A Maitland Smith Superb 8 Branch Bronze Fitting 'Safari' Centre Light
- 171 A Nice Newbridge Crystal Candle Holder
- 172 A Lot of Two Decoated Candle Holders
- 173 A Set of Body Armour, Helmet and Two Spears
- 174 A Large Footed Decorated Planter, 26" Tall
- 175 A Large Arti Di Mexico 8 Branch Centre Light Fitting
- 176 A Large Ornate Gilted Wall Mirror , 60" x 60"
- 177 An Ornamental Tree and a Christmas Tree
- 178 A Framed Print 'California Road Trip'
- 179 A Gilted Circular Footed Bowl, 13" Diameter



192



196



198



199



200



201



205



206



208



222



223



224



225



227



228



229



234



237



240



248



250



255



257



273

- 180 A Pair of Maitland Smith 'Monkey Lamps, Each Holding an Umbrella, 32" Tall
- 181 A Larged Carved Wooden 'Elephant' Lamp Table, 19" Tall
- 182 A Bronzed Metal Table Lamp and Shade, 39" Tall
- 183 A Carved Figurine of a Dog with its Bone
- 184 A Square Topped Studded Table
- 185 A Nice Carved Decorated and Gilted Shaped Front Side Table, 90" Long
- 186 A Maitland Smith Book Based Table Lamp and Shade, 26" Tall
- 187 A Very Nice Three Piece Upholstered Suite
- 188 A Large Gilt Framed Mirror, 88" x 53"
- 189 A Pair of Large Candle Holders, 25" Tall
- 190 Two Minature Scaled Boats
- 191 A Pair of Silvered Ceramic Anchors
- 192 A White Desk, Two Five Drawer Matching Chests and a Chair
- 193 A Double Bed and It's Covers
- 194 A White Kneehole Work Station, a Swivel Chair and a Table Lamp
- 195 A Mirror Sided Multi Cube
- 196 A Five Branch Lustre Chandelier
- 197 Two Pairs of Curtains and Their Poles, 85" Drop
- 198 A Pair of Theodore Alexandra, Three Drawer Chests, Leather Top. 28"W x 30"Tall
- 199 A Pair of Theodore Alexandra, Three Drawer Chests, Leather Top, 38"W x 32" Tall
- 200 A Theodore Alexandra Walnut and Bronzed Double Bed
- 201 A Very Nice Six Branch Arte Di Mexico, Centre Light Fitting
- 202 A Nice Quilt Cover, Bolster and 7 Cushions
- 203 A Pair of Bronzed Wall Sconces and Their Floral Arrangement
- 204 A Tall Glass Vase and Its Contents, 20" Tall
- 205 A Theodore Alexandra Walnut Long Stool, Leather Top 40 " Long
- 206 A 'Violin' Based Circular Music Table
- 207 Three Pairs of Curtains, Their Poles and Tie Backs, 92" Drop
- 208 A Pair of Bronzed Three Branch Table Lamps and Shades
- 209 A Framed Print 'Lioness and Cub'
- 210 An Electrified Patio Heater
- 211 A Tall Patio Table, Two High Stools and a Parasol
- 212 A Pair of Tall Planters and Their Contents
- 213 A Set of Three Crackled Glass Candle Holders
- 214 A Large Candle Holder
- 215 Two Nice Candle Holders
- 216 Two Trays and Contents
- 217 Two Candle Holders, a Floral Arrangement and Two Glass Vases
- 218 A Three Piece Bathroom Set and Other Pieces
- 219 Two Framed Table Top Pictures
- 220 A Floral Arrangement , Candleholders etc
- 220a A Nice Framed Picture 'Venice at Dawn'
- 220b A Nice Set of Curtains and Their Poles, 77" Drop
- 221 A Long Table Centre and Two Sets of Place Mats
- 222 A Large Spanish Rectangular Wall Hanging and It's Pole
- 222a Three Pairs of Bedroom Curtains, 96" Drop
- 223 A Very Nice Bronzed Figurine Bench
- 224 An As New Childs Activity Centre
- 225 A Very Good Circular Patio Table and Six Chair Set, Complete with Parasol Base
- 226 A Good Set of Bathroom Curtains and Their Poles, 89" Drop
- 227 A Good Oak Sleigh Bed, Mattress and Covers
- 228 A Six Piece Oak Bedroom Suite Including Wardrobe, Chest, Dressing Table, Pair of Bedside Cabinets and a Slimline Chest
- 229 A Matching Open Bookcase
- 230 A Hannspree Flatscreen TV

- 230a A Pair of Bedside Lamps
- 230b A Metal Table Lamp
- 230c A Good Swivel Desk Chair
- 231 A Sundry Lot including an Ornamental Rooster etc
- 232 An Ironing Board and a Morphy Richards Iron
- 232a A Metal Horse Head Coatrack, 39" Long and a Metal Boot Tray, 31" Long
- 233 A Cookworks Microwave
- 234 A Hotpoint Ecotech 'Experience' Washing Machine
- 235 A Hotpoint 'Aquarius' Tumble Dryer
- 236 Three Modern Prints and a Wall Clock
- 237 A Circular Kitchen Table and Four Chair Set
- 238 A TV Base and a Table Lamp Shade
- 239 A Good Rectangular Floor Rug, 60" x 32"
- 240 A Nice Two Seater Settee
- 241 A Matino Coffee Machine, Bread Bin etc
- 242 A Pine Dressing Mirror on Stand, and a Floor Lamp
- 243 A Good Divan Bed and Its Covers
- 244 A Hardwood Small Cabinet
- 245 A Framed Political Wall Map
- 246 A Beko Washing Machine
- 247 A Good Lot of 24 Galvanised Dog Pen Panels (mainly 4ft wide)
- 248 A Good Lot of 6 Single Galvanised Gates (36" Wide)
- 249 A Large Galvanised Gate and Two Single Gates
- 250 A Very Good Childs 'Burnout II' Bike with Gears
- 251 A Very Good Bike with Gears
- 252 A Good Leather Saddle
- 253 A Battery Charger
- 254 A Hose on Reel
- 255 A Draper 50 Litre Compressor
- 256 A Good Husqvarna Ride On Mower
- 257 A Flymo Power Driven Lawnmower
- 258 A Husqvarna Chain Saw, Helmet and Visor
- 259 A Good Back Sprayer
- 260 A Fish Tank, Stones and Accessories
- 261 Two Foot Pumps
- 262 A Small Bar- B-Que
- 263 A Shower Door and Panel
- 264 A Starwars B13-8 Silver Proof Medal - No 106
- 265 A Starwars R2-D2 Silver Proof Medal - No 383
- 266 A Starwars C-3PO Silver Proof Medal -No 733
- 267 Two Sets of Starwar First Edition Coins and Two Sets of Starwars Stamps
- 268 A Set of Five 'Maiden Flight Coins' - 1981 - 2011
- 269 The Apollo Space Mission First Day of Issue Sterling Silver Ltd. Edition Proof Medal, And A Set of Postmasters of America Medallion First Day Covers
- 270 Six Sets of Game of Thrones First Day Covers
- 271 An Edgar Mitchell Apollo 14 Signed 'Man of The Moon' Cover and A Loren Shriver Signed Space Shuttle Envelope - No 686/750
- 272 A Nasa Commemorative Medallion, Celebrating The Legacy of The Space Shuttle Program
- 273 An Interesting Collection of approx. 25 Souvenir Stamps And Their Envelopes
- 274 An Interesting Collection of approx. 25 Souvenir Stamps And Their Envelopes
- 275 An Interesting Collection of approx. 25 Souvenir Stamps And Their Envelopes
- 276 An Apollo X113 Framed Embroidered Badge, An Apollo X113 Medal And A Starwars 'Heros and Villains' Royal Mail Poster etc.
- 277 A Belgian 100 Frank Note, A 1966 One Punt Coin and An Irish 1967 Half Crown



Conditions

1. The highest approved bidder shall be the purchaser. The Auctioneer reserves the right to refuse any bid, and should any dispute arise between two or more bidders, the lot or lots in dispute shall be put up again, or not, and resold at the discretion of the Auctioneer, or the auctioneer may declare the purchaser. The Auctioneer reserves the right to bid on behalf of the vendor up to and including any reserve price placed on any lot and to alter, divide, group or withdraw any lot or lots either before or at any time during the sale.
2. The Auctioneer shall regulate the bidding and no bid shall be retracted.
3. Every purchaser shall give his name and place of abode, in default of which the Auctioneers shall have the power to resell at once, or afterwards as they may think fit.
4. Each bidder shall be supposed to have seen and to be thoroughly acquainted with the contents and conditions of the lot or lots on which he may bid, and no allowance whatsoever will be made for any faults, imperfections or errors of any description. The measurements and quantities described in the Catalogue are believed to be correct and must be taken as such. The purchaser being held to have satisfied himself as to measurements and quantities and other specifications in the Catalogue before bidding, neither will the Auctioneers or the Vendors be responsible for any lot or parts of any lot after the fall of the hammer, from which time all lots purchased are at the risk of the Purchaser.
5. The Auctioneers or the Vendors do not guarantee the measurements catalogued, or the correct description, genuineness or authenticity of any lot.
6. Each purchaser shall pay the whole amount of his purchase money (Auctioneer's Commission payable by purchaser) for all lots bought by him before any lot or lots can be removed and the whole amount due from each purchaser must be absolutely paid on each day of the sale and if not paid within such time, all moneys deposited in any part payment shall be absolutely forfeited and the Auctioneers will be at liberty to resell the lot or lots or any parts thereof remaining un-removed, by Public Sale or otherwise, without giving previous notice to the purchaser and any difference or deficiencies which may arise from, such re-sale, together with all expenses attending the same shall be made good by the purchaser.
7. The lots are sold with all faults and errors of description. No allowance can be made in any case, nor will the Vendors be answerable for any deficiencies in quantities or measurements when the purchaser, his agent, carrier or man employed by him has removed any part of his lot or lots from the premises. All lots purchased must be removed absolutely in the time specified and if not so removed may be resold by the Vendors.
8. The Purchaser shall be answerable for all damages occasioned by any injury or other lots, by the removal of lots purchased by them, or to the premises and to repair or pay damages to the owners of same before the removal of their lots from the premises. In the event of any persons interested in the premises, claiming the whole or any part of a lot before its removal there from or if in the Auctioneer's opinion, the removal of any lot will endanger or permanently damage any building, the Auctioneer may, by written notice to the purchaser of such lot delivered to him or his Agent, or sent by post to his abode or place of business last known to the Auctioneers, rescind the sale of any such lot. The purchaser shall then be repaid his purchase money but shall not have or make any other claim.
9. Such lot or lots as are not cleared away agreeably to the condition of this sale, will not only be forfeited and may be dealt with under last condition, but the purchaser shall pay every expense attending the removal of any such lot or lots, and the costs of making good any damage occasioned by such removal. No lots shall be removed until the day following the last day of sale.
10. If any dispute or difference arises about any lot, or any other subject, the same shall be settled by the Auctioneers, with the approval of the Vendors, whose determination shall be final and binding on all parties concerned.
11. The Auctioneers nor the Vendors do not accept any liability for personal injuries of any description sustained or caused by any reason whatsoever by any person while on the premises or otherwise.
12. Purchasers will pay 15% Auctioneers Commission (minimum fee £1) + VAT on the commission.

**Bid online via [easyliveauction](http://easyliveauction.com) -
Please register early -
See terms & conditions.**

easyliveAuction.com





51 Main Street, Ballymoney, BT53 6AN, Tel: (028) 2766 7669